

Anti-Cytokeratin 18 antibody [EPR1625] ab133272

重组 RabMAb

1 References **3 图像**

概述

产品名称	Anti-Cytokeratin 18抗体[EPR1625]
描述	兔单克隆抗体[EPR1625] to Cytokeratin 18
宿主	Rabbit
经测试应用	适用于: WB, ICC/IF
种属反应性	与反应: Human
免疫原	Synthetic peptide. This information is proprietary to Abcam and/or its suppliers.
阳性对照	HeLa and MCF-7 cell lysates, HeLa cells
常规说明	<p>This product is a recombinant monoclonal antibody, which offers several advantages including:</p> <ul style="list-style-type: none"> - High batch-to-batch consistency and reproducibility - Improved sensitivity and specificity - Long-term security of supply - Animal-free production <p>For more information see here.</p> <p>Our RabMAb[®] technology is a patented hybridoma-based technology for making rabbit monoclonal antibodies. For details on our patents, please refer to RabMAb[®] patents.</p> <p>Mouse, Rat: We have preliminary internal testing data to indicate this antibody may not react with these species. Please contact us for more information.</p>

性能

形式	Liquid
存放说明	Shipped at 4°C. Upon delivery aliquot and store at -20°C. Avoid freeze / thaw cycles.
存储溶液	<p>pH: 7.2</p> <p>Preservative: 0.05% Sodium azide</p> <p>Constituents: 0.1% BSA, 40% Glycerol (glycerin, glycerine), 9.85% Tris glycine, 50% Tissue culture supernatant</p>
纯度	Protein A purified
克隆	单克隆
克隆编号	EPR1625

应用

The Abpromise guarantee

Abpromise™承诺保证使用ab133272于以下的经测试应用

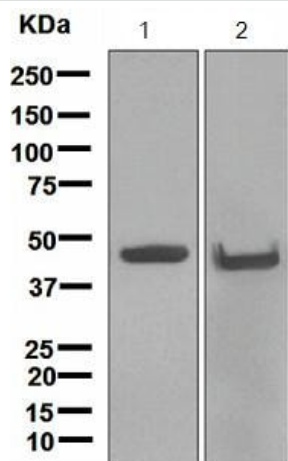
“应用说明”部分 下显示的仅为推荐的起始稀释度;实际最佳的稀释度/浓度应由使用者检定。

应用	Ab评论	说明
WB		1/10000 - 1/50000. Predicted molecular weight: 48 kDa.
ICC/IF		1/500 - 1/1000.

靶标

功能	Involved in the uptake of thrombin-antithrombin complexes by hepatic cells (By similarity). When phosphorylated, plays a role in filament reorganization. Involved in the delivery of mutated CFTR to the plasma membrane. Together with KRT8, is involved in interleukin-6 (IL-6)-mediated barrier protection.
组织特异性	Expressed in colon, placenta, liver and very weakly in exocervix. Increased expression observed in lymph nodes of breast carcinoma.
疾病相关	Defects in KRT18 are a cause of cirrhosis (CIRRH) [MIM:215600].
序列相似性	Belongs to the intermediate filament family.
翻译后修饰	Phosphorylation at Ser-34 increases during mitosis. Hyperphosphorylated at Ser-53 in diseased cirrhosis liver. Phosphorylation increases by IL-6. Proteolytically cleaved by caspases during epithelial cell apoptosis. Cleavage occurs at Asp-238 by either caspase-3, caspase-6 or caspase-7. O-glycosylated at multiple sites; glycans consist of single N-acetylglucosamine residues.
细胞定位	Cytoplasm > perinuclear region.

图片



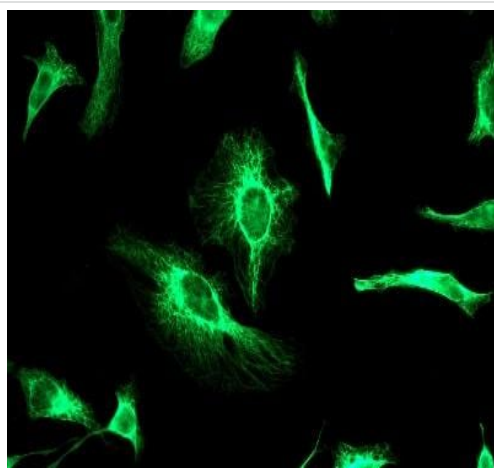
Western blot - Anti-Cytokeratin 18 antibody
[EPR1625] (ab133272)

All lanes : Anti-Cytokeratin 18 antibody [EPR1625] (ab133272) at
1/10000 dilution

Lane 1 : HeLa cell lysates

Lane 2 : MCF-7 cell lysates

Predicted band size: 48 kDa



Immunocytochemistry/ Immunofluorescence - Anti-
Cytokeratin 18 antibody [EPR1625] (ab133272)

Immunofluorescent staining of HeLa cells labelling Cytokeratin 18
using ab133272, at 1/500 dilution.

Why choose a
recombinant antibody?



**Research with
confidence**
Consistent and
reproducible results



**Long-term and
scalable supply**
Recombinant
technology



**Success from the
first experiment**
Confirmed
specificity



**Ethical standards
compliant**
Animal-free
production

Anti-Cytokeratin 18 antibody [EPR1625] (ab133272)

Our Abpromise to you: Quality guaranteed and expert technical support

- Replacement or refund for products not performing as stated on the datasheet
- Valid for 12 months from date of delivery
- Response to your inquiry within 24 hours

- We provide support in Chinese, English, French, German, Japanese and Spanish
- Extensive multi-media technical resources to help you
- We investigate all quality concerns to ensure our products perform to the highest standards

If the product does not perform as described on this datasheet, we will offer a refund or replacement. For full details of the Abpromise, please visit <https://www.abcam.cn/abpromise> or contact our technical team.

Terms and conditions

- Guarantee only valid for products bought direct from Abcam or one of our authorized distributors