

### Anti-Cytokeratin 18 antibody [DC 10] ab7797

★★★★★ [11 Abreviews](#) [17 References](#) [6 图像](#)

#### 概述

产品名称	Anti-Cytokeratin 18抗体[DC 10]
描述	小鼠单克隆抗体[DC 10] to Cytokeratin 18
宿主	Mouse
特异性	Specific reactivity for the cytokeratin 18 (45 kD) polypeptide.
经测试应用	适用于: IHC-P, ICC/IF, Flow Cyt (Intra), WB
种属反应性	与反应: Human 不与反应: Mouse, Rat, Sheep, Hamster, Cow, Dog, Pig
免疫原	Tissue, cells or virus corresponding to Human Cytokeratin 18. PMC-42 human breast carcinoma cells.
阳性对照	ICC/IF: Hep-2 cells. IHC-P: Human colon carcinoma. WB: HeLa, HT-29 cell lysate. Flow Cyt (Intra): MCF-7 cells; HeLa cells.
常规说明	This antibody reacts with a wide variety of simple epithelia. It does not react with stratified squamous epithelia. It reacts with epithelial tumors of the gastrointestinal tract, lung, breast, pancreas, ovary, and thyroid.

The Life Science industry has been in the grips of a reproducibility crisis for a number of years. Abcam is leading the way in addressing this with our range of recombinant monoclonal antibodies and knockout edited cell lines for gold-standard validation. Please check that this product meets your needs before purchasing.

If you have any questions, special requirements or concerns, please send us an inquiry and/or contact our Support team ahead of purchase. Recommended alternatives for this product can be found below, along with publications, customer reviews and Q&As

#### 性能

形式	Liquid
存放说明	Shipped at 4°C. Store at +4°C short term (1-2 weeks). Upon delivery aliquot. Store at -20°C or -80°C. Avoid freeze / thaw cycle.
存储溶液	pH: 7.40 Preservative: 0.097% Sodium azide Constituent: PBS

纯度	Protein A purified
纯化说明	Purified from TCS
Primary antibody说明	This antibody reacts with a wide variety of simple epithelia. It does not react with stratified squamous epithelia. It reacts with epithelial tumors of the gastrointestinal tract, lung, breast, pancreas, ovary, and thyroid.
克隆	单克隆
克隆编号	DC 10
同种型	IgG1

应用

The Abpromise guarantee      **Abpromise™**承诺保证使用ab7797于以下的经测试应用

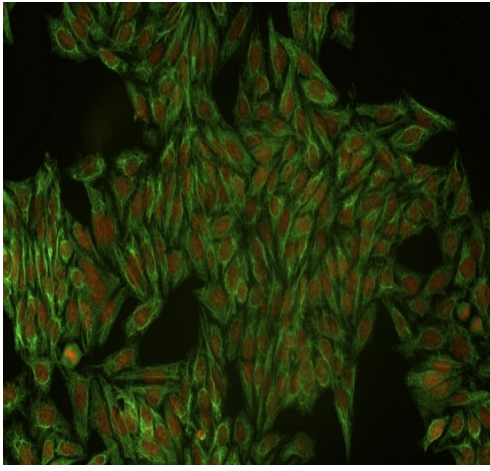
“应用说明”部分 下显示的仅为推荐的起始稀释度;实际最佳的稀释度/浓度应由使用者检定。

应用	Ab评论	说明
IHC-P		Use a concentration of 10 µg/ml.
ICC/IF	★★★★★ (7)	1/400.
Flow Cyt (Intra)		Use a concentration of 6 - 16 µg/ml. <b>ab170190</b> - Mouse monoclonal IgG1, is suitable for use as an isotype control with this antibody.
WB	★★★★★ (1)	Use a concentration of 1 - 2 µg/ml.

靶标

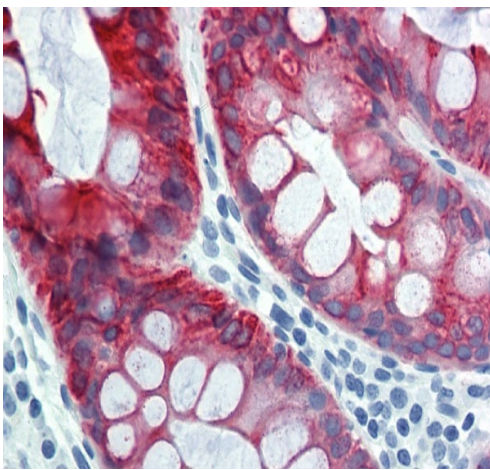
功能	Involved in the uptake of thrombin-antithrombin complexes by hepatic cells (By similarity). When phosphorylated, plays a role in filament reorganization. Involved in the delivery of mutated CFTR to the plasma membrane. Together with KRT8, is involved in interleukin-6 (IL-6)-mediated barrier protection.
组织特异性	Expressed in colon, placenta, liver and very weakly in exocervix. Increased expression observed in lymph nodes of breast carcinoma.
疾病相关	Defects in KRT18 are a cause of cirrhosis (CIRRH) [MIM:215600].
序列相似性	Belongs to the intermediate filament family.
翻译后修饰	Phosphorylation at Ser-34 increases during mitosis. Hyperphosphorylated at Ser-53 in diseased cirrhosis liver. Phosphorylation increases by IL-6. Proteolytically cleaved by caspases during epithelial cell apoptosis. Cleavage occurs at Asp-238 by either caspase-3, caspase-6 or caspase-7. O-glycosylated at multiple sites; glycans consist of single N-acetylglucosamine residues.
细胞定位	Cytoplasm > perinuclear region.

图片



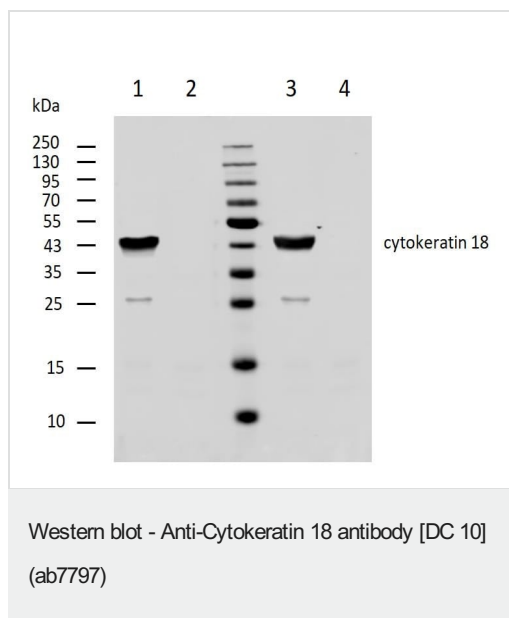
Immunocytochemistry staining of Cytokeratin 18 in Hep-2 cells using mouse monoclonal antibody DC-10 (ab7797, diluted 1/400), detected with GAM IgG-Alexa Fluor®488 (diluted 1/200; green), cell nuclei stained with PI (1 µg/ml; orange).

Immunocytochemistry/ Immunofluorescence - Anti-Cytokeratin 18 antibody [DC 10] (ab7797)



Immunohistochemistry staining of human colon (paraffin sections) using ab7797 10 µg/ml

Immunohistochemistry (Formalin/PFA-fixed paraffin-embedded sections) - Anti-Cytokeratin 18 antibody [DC 10] (ab7797)



**All lanes :** Anti-Cytokeratin 18 antibody [DC 10] (ab7797) at 2  $\mu\text{g/ml}$

**Lane 1 :** HT-29 (Human colorectal adenocarcinoma cell line) whole cell lysate (Non-Reducing)

**Lane 2 :** MOLT-4 (Human lymphoblastic leukemia cell line) whole cell lysate (Non-Reducing)

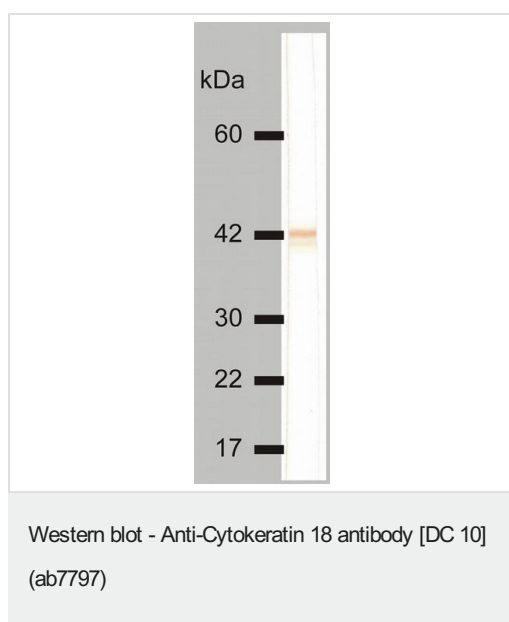
**Lane 3 :** HT-29 (Human colorectal adenocarcinoma cell line) whole cell lysate (Reducing)

**Lane 4 :** MOLT-4 (Human lymphoblastic leukemia cell line) whole cell lysate (Reducing)

## Secondary

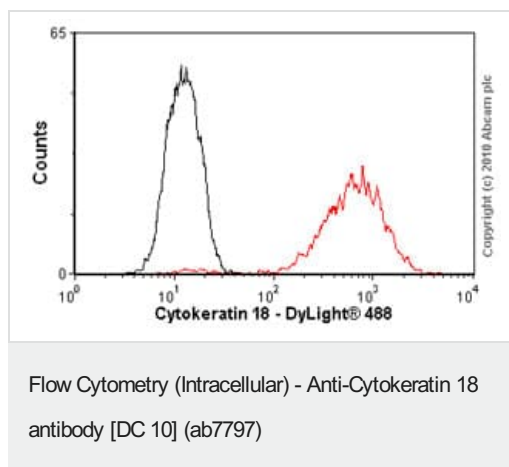
**All lanes :** IRDye800-conjugated anti-mouse secondary antibody.

A specific band was detected for cytokeratin 18 at approximately 46 kDa, and its proteolytic fragment at approximately 25 kDa.



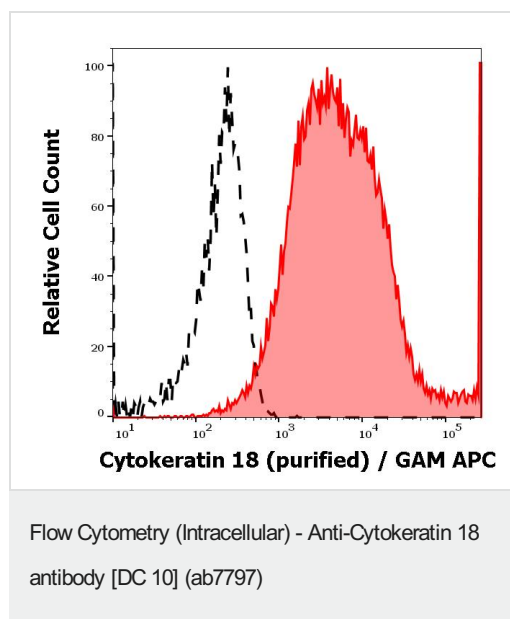
Anti-Cytokeratin 18 antibody [DC 10] (ab7797) at 1  $\mu\text{g/ml}$  + HeLa (human epithelial cell line from cervix adenocarcinoma) whole cell lysate

**Observed band size:** 40 kDa



Overlay histogram showing MCF-7 cells stained with ab7797 (red line). The cells were fixed with 4% paraformaldehyde (10 min) and then permeabilized with 0.1% PBS-Triton for 20 min. The cells were then incubated in 1x PBS / 10% normal goat serum / 0.3M glycine to block non-specific protein-protein interactions followed by the antibody (ab7797, 1  $\mu\text{g}/1 \times 10^6$  cells) for 30 min at 22°C. The secondary antibody used was DyLight® 488 goat anti-mouse IgG (H+L) ([ab96879](#)) at 1/500 dilution for 30 min at 22°C. Isotype control antibody (black line) was mouse IgG1 [ICIGG1] ([ab91353](#), 2  $\mu\text{g}/1 \times 10^6$  cells) used under the same conditions. Acquisition of

>5,000 events was performed. This antibody gave a positive signal in MCF-7 cells fixed with methanol (5 min)/permeabilized in 0.1% PBS-Triton used under the same conditions.



Flow cytometry analysis (intracellular staining) of MCF-7 cells (red-filled) stained using ab7797 anti-cytokeratin 18 purified antibody (concentration in sample 0,6 µg/ml, GAM APC). Isotype control: Caco-2 cells (black-dashed).

**Please note:** All products are "FOR RESEARCH USE ONLY. NOT FOR USE IN DIAGNOSTIC PROCEDURES"

### Our Abpromise to you: Quality guaranteed and expert technical support

- Replacement or refund for products not performing as stated on the datasheet
- Valid for 12 months from date of delivery
- Response to your inquiry within 24 hours
- We provide support in Chinese, English, French, German, Japanese and Spanish
- Extensive multi-media technical resources to help you
- We investigate all quality concerns to ensure our products perform to the highest standards

If the product does not perform as described on this datasheet, we will offer a refund or replacement. For full details of the Abpromise, please visit <https://www.abcam.cn/abpromise> or contact our technical team.

### Terms and conditions

- Guarantee only valid for products bought direct from Abcam or one of our authorized distributors