


# Anti-Cytokeratin 13 antibody ab97327

[2 References](#) [2 图像](#)

### 概述

产品名称	Anti-Cytokeratin 13抗体
描述	兔多克隆抗体to Cytokeratin 13
宿主	Rabbit
经测试应用	适用于: WB, ICC/IF
种属反应性	与反应: Human 预测可用于: Mouse 
免疫原	Recombinant fragment corresponding to a region within amino acids 198-448 of Human Cytokeratin 13 (NP_705694).
阳性对照	WB: HeLa whole cell lysate ICC/IF: A431 cells
常规说明	<p>The Life Science industry has been in the grips of a reproducibility crisis for a number of years. Abcam is leading the way in addressing this with our range of recombinant monoclonal antibodies and knockout edited cell lines for gold-standard validation. Please check that this product meets your needs before purchasing.</p> <p>If you have any questions, special requirements or concerns, please send us an inquiry and/or contact our Support team ahead of purchase. Recommended alternatives for this product can be found below, along with publications, customer reviews and Q&amp;As</p>

### 性能

形式	Liquid
存放说明	Shipped at 4°C. Upon delivery aliquot and store at -20°C or -80°C. Avoid repeated freeze / thaw cycles.
存储溶液	<p>pH: 7.00</p> <p>Preservative: 0.01% Thimerosal (merthiolate)</p> <p>Constituents: 1.21% Tris, 0.75% Glycine, 10% Glycerol (glycerin, glycerine)</p>
纯度	Immunogen affinity purified
克隆	多克隆
同种型	IgG

### 应用

The Abpromise guarantee

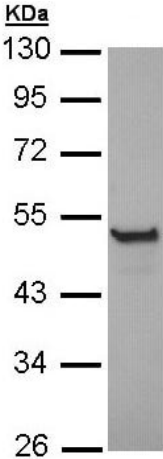
Abpromise™承诺保证使用ab97327于以下的经测试应用

“应用说明”部分 下显示的仅为推荐的起始稀释度;实际最佳的稀释度/浓度应由使用者检定。

应用	Ab评论	说明
WB		1/500 - 1/3000. Predicted molecular weight: 50 kDa.
ICC/IF		1/100 - 1/200.

靶标	
组织特异性	Expressed in some epidermal sweat gland ducts (at protein level) and in exocervix, esophagus and placenta.
疾病相关	Defects in KRT13 are a cause of white sponge nevus of cannon (WSN) [MIM:193900]. WSN is a rare autosomal dominant disorder which predominantly affects non-cornified stratified squamous epithelia. Clinically, it is characterized by the presence of soft, white, and spongy plaques in the oral mucosa. The characteristic histopathologic features are epithelial thickening, parakeratosis, and vacuolization of the suprabasal layer of oral epithelial keratinocytes. Less frequently the mucous membranes of the nose, esophagus, genitalia and rectum are involved.
序列相似性	Belongs to the intermediate filament family.
翻译后修饰	O-glycosylated; glycans consist of single N-acetylglucosamine residues.

图片

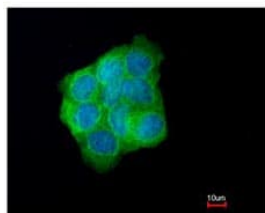
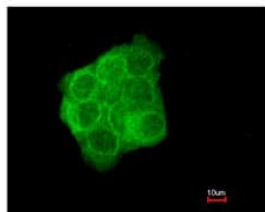


Anti-Cytokeratin 13 antibody (ab97327) at 1/1000 dilution + HeLa whole cell lysate at 30 µg

**Predicted band size:** 50 kDa

10% SDS-PAGE

Western blot - Anti-Cytokeratin 13 antibody (ab97327)



ab97327, at a 1/200 dilution, staining Cytokeratin 13 in paraformaldehyde fixed A431 cells by Immunofluorescence. Lower image is merged with DNA probe.

Immunocytochemistry/ Immunofluorescence - Anti-Cytokeratin 13 antibody (ab97327)

**Please note:** All products are "FOR RESEARCH USE ONLY. NOT FOR USE IN DIAGNOSTIC PROCEDURES"

### Our Abpromise to you: Quality guaranteed and expert technical support

- Replacement or refund for products not performing as stated on the datasheet
- Valid for 12 months from date of delivery
- Response to your inquiry within 24 hours
- We provide support in Chinese, English, French, German, Japanese and Spanish
- Extensive multi-media technical resources to help you
- We investigate all quality concerns to ensure our products perform to the highest standards

If the product does not perform as described on this datasheet, we will offer a refund or replacement. For full details of the Abpromise, please visit <https://www.abcam.cn/abpromise> or contact our technical team.

### Terms and conditions

- Guarantee only valid for products bought direct from Abcam or one of our authorized distributors