

Anti-Cytochrome P450 1A2 antibody [3B8C1] ab56073

6 References **2 图像**

概述

产品名称	Anti-Cytochrome P450 1A2抗体[3B8C1]
描述	小鼠单克隆抗体[3B8C1] to Cytochrome P450 1A2
宿主	Mouse
经测试应用	适用于: WB, IHC-P
种属反应性	与反应: Human, Recombinant fragment
免疫原	Rat Cytochrome P450 1A2 proteins
阳性对照	IHC-P: Normal human liver sections.
常规说明	<p>The Life Science industry has been in the grips of a reproducibility crisis for a number of years. Abcam is leading the way in addressing this with our range of recombinant monoclonal antibodies and knockout edited cell lines for gold-standard validation. Please check that this product meets your needs before purchasing.</p> <p>If you have any questions, special requirements or concerns, please send us an inquiry and/or contact our Support team ahead of purchase. Recommended alternatives for this product can be found below, along with publications, customer reviews and Q&As</p>

性能

形式	Liquid
存放说明	Shipped at 4°C. Upon delivery aliquot and store at -20°C. Avoid freeze / thaw cycles.
存储溶液	Preservative: 0.08% Sodium azide Constituent: PBS
纯度	Protein G purified
克隆	单克隆
克隆编号	3B8C1
骨髓瘤	Ag8.653
同种型	IgG1

应用

The Abpromise guarantee **Abpromise™**承诺保证使用ab56073于以下的经测试应用

“应用说明”部分 下显示的仅为推荐的起始稀释度;实际最佳的稀释度/浓度应由使用者检定。

应用	Ab评论	说明
WB		Use a concentration of 1 - 2 µg/ml. Detects a band of approximately 58 kDa (predicted molecular weight: 58 kDa).
IHC-P		Use a concentration of 1 - 5 µg/ml.

靶标

功能	Cytochromes P450 are a group of heme-thiolate monooxygenases. In liver microsomes, this enzyme is involved in an NADPH-dependent electron transport pathway. It oxidizes a variety of structurally unrelated compounds, including steroids, fatty acids, and xenobiotics. Most active in catalyzing 2-hydroxylation. Caffeine is metabolized primarily by cytochrome CYP1A2 in the liver through an initial N3-demethylation. Also acts in the metabolism of aflatoxin B1 and acetaminophen. Participates in the bioactivation of carcinogenic aromatic and heterocyclic amines. Catalyzes the N-hydroxylation of heterocyclic amines and the O-deethylation of phenacetin.
组织特异性	Liver.
序列相似性	Belongs to the cytochrome P450 family.
细胞定位	Endoplasmic reticulum membrane. Microsome membrane.

图片



All lanes : Anti-Cytochrome P450 1A2 antibody [3B8C1] (ab56073)

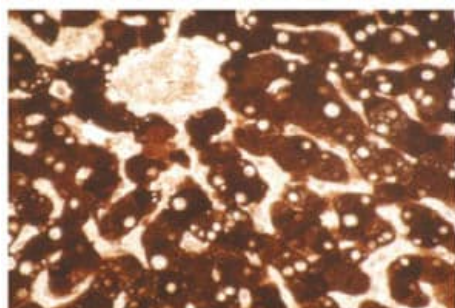
Lane 2 : recombinant CYP1B1 at 0.5pmol/lane

Lane 3 : recombinant CYP1A1 at 0.5pmol/lane

Lane 4 : recombinant CYP1A2 at 0.5pmol/lane

Predicted band size: 58 kDa

Observed band size: 58 kDa



Immunohistochemical staining of formalin-fixed, paraffin-embedded normal human liver tissue section using ab56073.

Immunohistochemistry (Formalin/PFA-fixed paraffin-embedded sections) - Anti-Cytochrome P450 1A2 antibody [3B8C1] (ab56073)

Please note: All products are "FOR RESEARCH USE ONLY. NOT FOR USE IN DIAGNOSTIC PROCEDURES"

Our Abpromise to you: Quality guaranteed and expert technical support

- Replacement or refund for products not performing as stated on the datasheet
- Valid for 12 months from date of delivery
- Response to your inquiry within 24 hours
- We provide support in Chinese, English, French, German, Japanese and Spanish
- Extensive multi-media technical resources to help you
- We investigate all quality concerns to ensure our products perform to the highest standards

If the product does not perform as described on this datasheet, we will offer a refund or replacement. For full details of the Abpromise, please visit <https://www.abcam.cn/abpromise> or contact our technical team.

Terms and conditions

- Guarantee only valid for products bought direct from Abcam or one of our authorized distributors