

Anti-Cytochrome C antibody [EPR1327] ab133504

重组 RabMAb

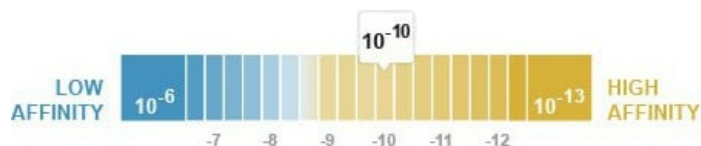
★★★★★ [2 Abreviews](#) [197 References](#) [14 图像](#)

概述

产品名称	Anti-Cytochrome C抗体[EPR1327]
描述	兔单克隆抗体[EPR1327] to Cytochrome C
宿主	Rabbit
经测试应用	适用于: WB, IHC-P, ICC/IF, IP
种属反应性	与反应: Mouse, Rat, Human
免疫原	Synthetic peptide within Human Cytochrome C aa 1-100. The exact sequence is proprietary. Database link: P99999
阳性对照	WB: Human fetal kidney and fetal heart tissue lysate. Rat and mouse brain tissue lysate. Molt4 and SH-SY5Y cell lysate. Human heart, kidney and spleen lysate. ICC/IF: SH-SY5Y and HeLa cells. IHC-P: Human cervical carcinoma tissue. Mouse liver tissue. Human and rat kidney tissue. IP: Molt-4 cells.
常规说明	This product is a recombinant monoclonal antibody, which offers several advantages including: <ul style="list-style-type: none"> - High batch-to-batch consistency and reproducibility - Improved sensitivity and specificity - Long-term security of supply - Animal-free production For more information see here . Our RabMAb [®] technology is a patented hybridoma-based technology for making rabbit monoclonal antibodies. For details on our patents, please refer to RabMAb[®] patents .

性能

形式	Liquid
存放说明	Shipped at 4°C. Store at -20°C. Stable for 12 months at -20°C.
解离常数 (K_D)	K _D = 1.29 x 10 ⁻¹⁰ M



[Learn more about K_D](#)

存储溶液	pH: 7.2 Preservative: 0.01% Sodium azide Constituents: 40% Glycerol, 0.05% BSA, 59% PBS
纯度	Protein A purified
克隆	单克隆
克隆编号	EPR1327
同种型	IgG

应用

The Abpromise guarantee **Abpromise™** 承诺保证使用 ab133504 于以下的经测试应用

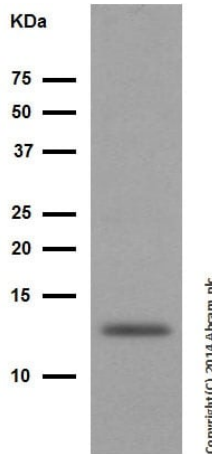
“应用说明”部分 下显示的仅为推荐的起始稀释度; 实际最佳的稀释度/浓度应由使用者检定。

应用	Ab评论	说明
WB	★★★★☆ (1)	1/5000. Detects a band of approximately 14 kDa (predicted molecular weight: 11 kDa).
IHC-P		1/250 - 1/500. Perform heat mediated antigen retrieval before commencing with IHC staining protocol. See IHC antigen retrieval protocols .
ICC/IF	★★★★★ (1)	1/100.
IP		1/30.

靶标

功能	<p>Electron carrier protein. The oxidized form of the cytochrome c heme group can accept an electron from the heme group of the cytochrome c1 subunit of cytochrome reductase. Cytochrome c then transfers this electron to the cytochrome oxidase complex, the final protein carrier in the mitochondrial electron-transport chain.</p> <p>Plays a role in apoptosis. Suppression of the anti-apoptotic members or activation of the pro-apoptotic members of the Bcl-2 family leads to altered mitochondrial membrane permeability resulting in release of cytochrome c into the cytosol. Binding of cytochrome c to Apaf-1 triggers the activation of caspase-9, which then accelerates apoptosis by activating other caspases.</p>
疾病相关	<p>Defects in CYCS are the cause of thrombocytopenia type 4 (THC4) [MIM:612004]; also known as autosomal dominant thrombocytopenia type 4. Thrombocytopenia is the presence of relatively few platelets in blood. THC4 is a non-syndromic form of thrombocytopenia. Clinical manifestations of thrombocytopenia are absent or mild. THC4 may be caused by dysregulated platelet formation.</p>
序列相似性	Belongs to the cytochrome c family.
翻译后修饰	Binds 1 heme group per subunit.
细胞定位	Mitochondrion matrix.

图片



Western blot - Anti-Cytochrome C antibody [EPR1327] (ab133504)

Anti-Cytochrome C antibody [EPR1327] (ab133504) at 1/5000 dilution (purified) + Human fetal kidney tissue lysate at 10 µg

Secondary

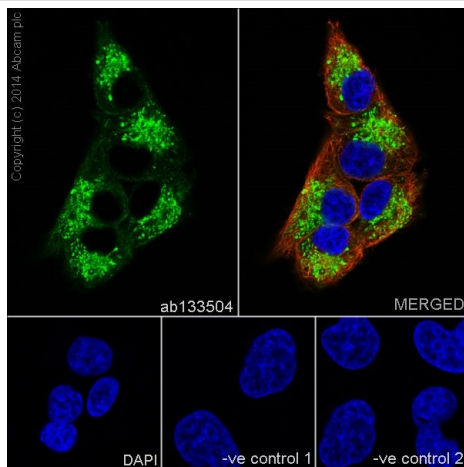
HRP goat anti-rabbit (H+L) at 1/1000 dilution

Predicted band size: 11 kDa

Observed band size: 14 kDa

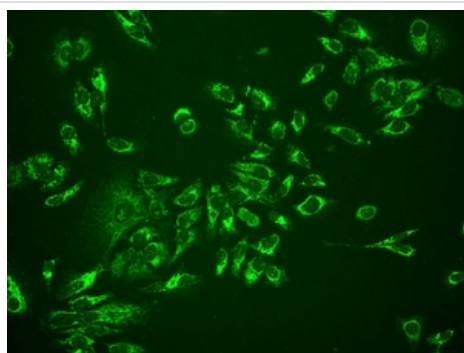
Blocking buffer: 5% NFDM/TBST

Dilution buffer: 5% NFDM/TBST



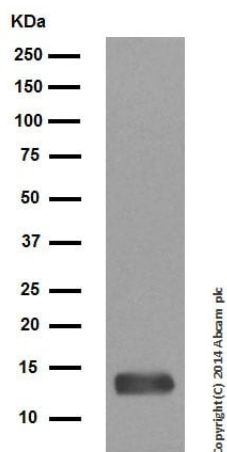
Immunocytochemistry/ Immunofluorescence - Anti-Cytochrome C antibody [EPR1327] (ab133504)

Immunofluorescence staining of SH-SY5Y cells with purified ab133504 at a working dilution of 1 in 100, counter-stained with DAPI. The secondary antibody was Alexa Fluor[®] 488 goat anti rabbit (**ab150077**), used at a dilution of 1 in 500. **ab7291** was used to stain tubulin, and this is shown in the top right hand panel. The cells were fixed in 4% PFA and permeabilized using 0.1% Triton X 100. The negative control is shown in bottom middle and right hand panels - for the negative controls, purified ab133504 was used at a dilution of 1/200 followed by an Alexa Fluor[®] 594 goat anti-mouse antibody at a dilution of 1/500.



Immunocytochemistry/ Immunofluorescence - Anti-Cytochrome C antibody [EPR1327] (ab133504)

Immunofluorescent analysis of HeLa (Human epithelial cell line from cervix adenocarcinoma) cells labelling Cytochrome C with unpurified ab133504 at 1/100 dilution.



Western blot - Anti-Cytochrome C antibody
[EPR1327] (ab133504)

Anti-Cytochrome C antibody [EPR1327] (ab133504) at 1/5000
dilution (purified) + Human fetal heart tissue lysate at 10 μ g

Secondary

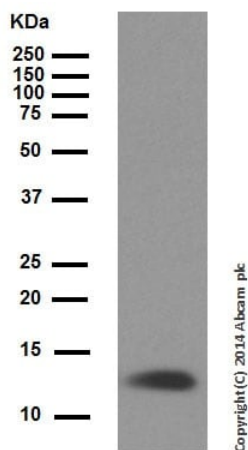
HRP goat anti-rabbit (H+L) at 1/1000 dilution

Predicted band size: 11 kDa

Observed band size: 14 kDa

Blocking buffer: 5% NFDM/TBST

Dilution buffer: 5% NFDM/TBST



Western blot - Anti-Cytochrome C antibody
[EPR1327] (ab133504)

Anti-Cytochrome C antibody [EPR1327] (ab133504) at 1/5000
dilution (purified) + Rat brain tissue lysate at 1/1000 dilution

Secondary

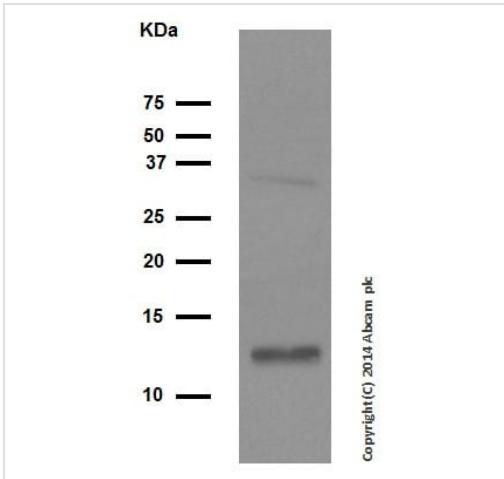
HRP goat anti-rabbit (H+L) at 1/1000 dilution

Predicted band size: 11 kDa

Observed band size: 14 kDa

Blocking buffer: 5% NFDM/TBST

Dilution buffer: 5% NFDM/TBST



Western blot - Anti-Cytochrome C antibody [EPR1327] (ab133504)

Anti-Cytochrome C antibody [EPR1327] (ab133504) at 1/50000 dilution (purified) + Mouse brain tissue lysate at 10 µg

Secondary

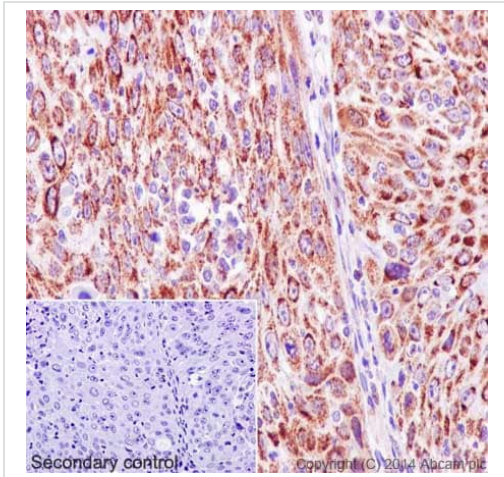
HRP goat anti-rabbit (H+L) at 1/1000 dilution

Predicted band size: 11 kDa

Observed band size: 14 kDa

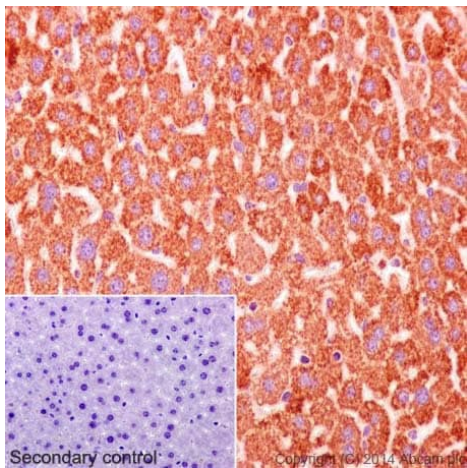
Blocking buffer: 5% NFDm/TBST

Dilution buffer: 5% NFDm/TBST



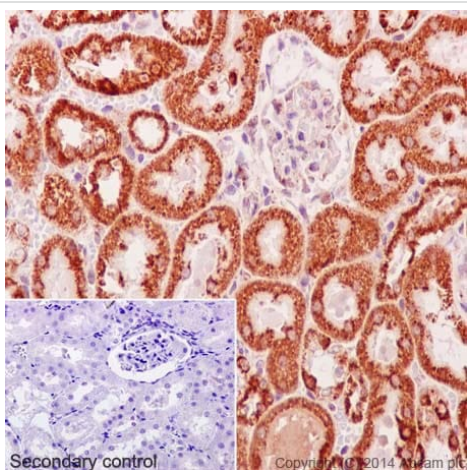
Immunohistochemistry (Formalin/PFA-fixed paraffin-embedded sections) - Anti-Cytochrome C antibody [EPR1327] (ab133504)

Immunohistochemical staining of paraffin embedded human cervical carcinoma with purified ab133504 at a working dilution of 1 in 500. The secondary antibody used is a HRP goat anti-rabbit H+L (**ab97051**). The sample is counter-stained with hematoxylin. Antigen retrieval was performed using Tris-EDTA buffer, pH 9.0. PBS was used instead of the primary antibody as the negative control, and is shown in the inset.



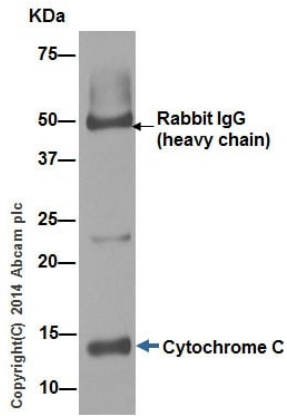
Immunohistochemical staining of paraffin embedded mouse liver with purified ab133504 at a working dilution of 1 in 500. The secondary antibody used is a HRP goat anti-rabbit H+L ([ab97051](#)). The sample is counter-stained with hematoxylin. Antigen retrieval was performed using Tris-EDTA buffer, pH 9.0. PBS was used instead of the primary antibody as the negative control, and is shown in the inset.

Immunohistochemistry (Formalin/PFA-fixed paraffin-embedded sections) - Anti-Cytochrome C antibody [EPR1327] ([ab133504](#))



Immunohistochemical staining of paraffin embedded rat kidney with purified ab133504 at a working dilution of 1 in 500. The secondary antibody used is a HRP goat anti-rabbit H+L ([ab97051](#)). The sample is counter-stained with hematoxylin. Antigen retrieval was performed using Tris-EDTA buffer, pH 9.0. PBS was used instead of the primary antibody as the negative control, and is shown in the inset.

Immunohistochemistry (Formalin/PFA-fixed paraffin-embedded sections) - Anti-Cytochrome C antibody [EPR1327] ([ab133504](#))

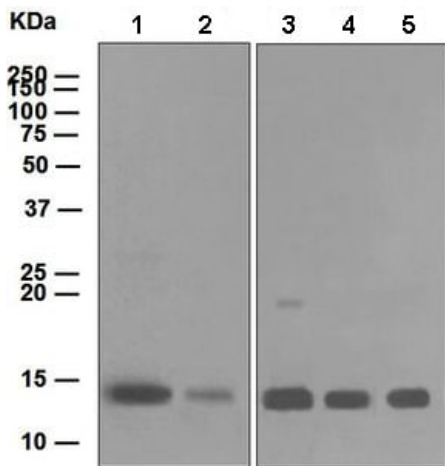


Immunoprecipitation - Anti-Cytochrome C antibody
[EPR1327] (ab133504)

ab133504 (purified) at 1/30 immunoprecipitating Cytochrome C in Molt-4 cells.

For western blotting, a HRP-conjugated goat anti-rabbit (H+L), was used as the secondary antibody (1/1000).

Blocking/Dilution buffer and concentration: 5% NFDM/TBST.



Western blot - Anti-Cytochrome C antibody
[EPR1327] (ab133504)

All lanes : Anti-Cytochrome C antibody [EPR1327] (ab133504) at 1/10000 dilution (unpurified)

Lane 1 : Molt4 lysate

Lane 2 : SH-SY5Y lysate

Lane 3 : Human heart lysate

Lane 4 : Human kidney lysate

Lane 5 : Human spleen lysate

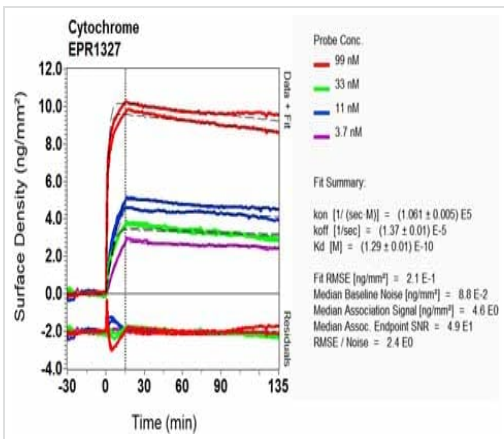
Lysates/proteins at 10 µg per lane.

Secondary

All lanes : Goat-anti-rabbit HRP at 1/2000 dilution

Predicted band size: 11 kDa

Observed band size: 14 kDa

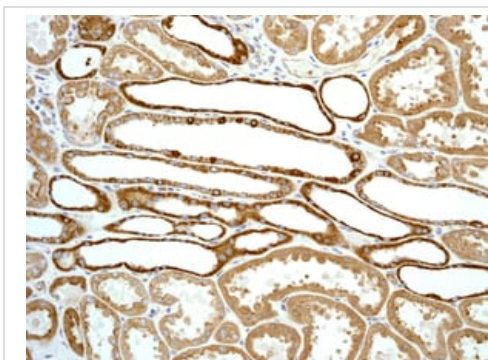


OI-RD Scanning - Anti-Cytochrome C antibody
[EPR1327] (ab133504)

Equilibrium disassociation constant (K_D)

Learn more about K_D

[Click here to learn more about \$K_D\$](#)





Immunohistochemical analysis of paraffin-embedded human kidney tissue labelling Cytochrome C with unpurified ab133504 at 1/250 dilution.

Perform heat mediated antigen retrieval before commencing with IHC staining protocol.

Immunohistochemistry (Formalin/PFA-fixed paraffin-embedded sections) - Anti-Cytochrome C antibody
[EPR1327] (ab133504)

Why choose a recombinant antibody?

 Research with confidence Consistent and reproducible results	 Long-term and scalable supply Recombinant technology
 Success from the first experiment Confirmed specificity	 Ethical standards compliant Animal-free production

Anti-Cytochrome C antibody [EPR1327] (ab133504)

Please note: All products are "FOR RESEARCH USE ONLY. NOT FOR USE IN DIAGNOSTIC PROCEDURES"

Our Abpromise to you: Quality guaranteed and expert technical support

- Replacement or refund for products not performing as stated on the datasheet
- Valid for 12 months from date of delivery
- Response to your inquiry within 24 hours

- We provide support in Chinese, English, French, German, Japanese and Spanish
- Extensive multi-media technical resources to help you
- We investigate all quality concerns to ensure our products perform to the highest standards

If the product does not perform as described on this datasheet, we will offer a refund or replacement. For full details of the Abpromise, please visit <https://www.abcam.cn/abpromise> or contact our technical team.

Terms and conditions

- Guarantee only valid for products bought direct from Abcam or one of our authorized distributors