

Anti-Cytochrome b245 Light Chain/p22-phox antibody ab191512

敲除 验证

4 References **2 图像**

概述

产品名称	Anti-Cytochrome b245 Light Chain/p22-phox抗体
描述	兔多克隆抗体 to Cytochrome b245 Light Chain/p22-phox
宿主	Rabbit
特异性	ab191512 detects endogenous levels of Cytochrome b245 Light Chain/p22-phox protein.
经测试应用	适用于: WB
种属反应性	与反应: Mouse, Rat, Human
免疫原	Synthetic peptide corresponding to Human Cytochrome b245 Light Chain/p22-phox. Database link: P13498
阳性对照	MCF7, NIH3T3 and PC12 whole cell lysates.
常规说明	<p>The Life Science industry has been in the grips of a reproducibility crisis for a number of years. Abcam is leading the way in addressing this with our range of recombinant monoclonal antibodies and knockout edited cell lines for gold-standard validation. Please check that this product meets your needs before purchasing.</p> <p>If you have any questions, special requirements or concerns, please send us an inquiry and/or contact our Support team ahead of purchase. Recommended alternatives for this product can be found below, along with publications, customer reviews and Q&As</p>

性能

形式	Liquid
存放说明	Shipped at 4°C. Store at +4°C short term (1-2 weeks). Upon delivery aliquot. Store at -20°C long term. Avoid freeze / thaw cycle.
存储溶液	pH: 7.20 Preservative: 0.1% Sodium azide Constituents: 50% Glycerol (glycerin, glycerine), 49% PBS
纯度	Immunogen affinity purified
纯化说明	Purity is > 95% (by SDS-PAGE)
克隆	多克隆
同种型	IgG

应用

The Abpromise guarantee **Abpromise™** 承诺保证使用 ab191512 于以下的经测试应用

“应用说明”部分 下显示的仅为推荐的起始稀释度;实际最佳的稀释度/浓度应由使用者检定。

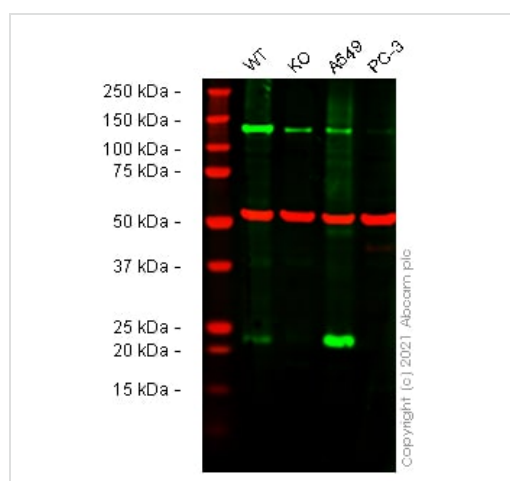
应用	Ab评论	说明
WB		1/500. Predicted molecular weight: 21 kDa. Blocking in milk is not recommended.

靶标

相关性 Cytochrome b245 Light Chain/p22phox is a critical component of the membrane-bound oxidase complex that generates superoxide. It complexes with NOX3 to form a functional NADPH oxidase.

细胞定位 Cell Membrane

图片



Western blot - Anti-Cytochrome b245 Light Chain/p22-phox antibody (ab191512)

All lanes : Anti-Cytochrome b245 Light Chain/p22-phox antibody (ab191512)

Lane 1 : Wild-type HEK-293T cell lysate

Lane 2 : CYBA knockout HEK-293T cell lysate

Lane 3 : A549 cell lysate

Lane 4 : PC-3 cell lysate

Lysates/proteins at 20 µg per lane.

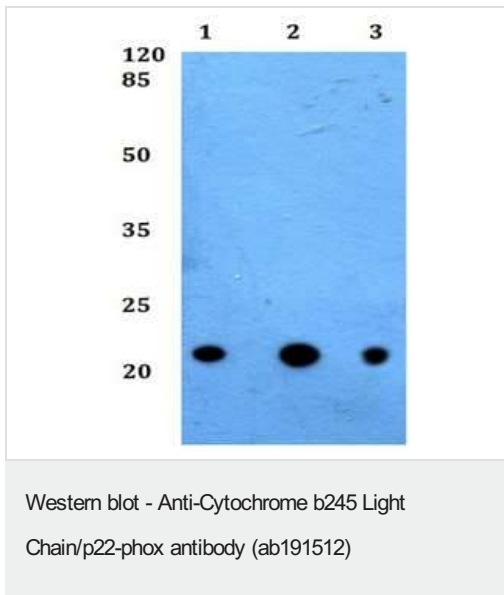
Performed under reducing conditions.

Predicted band size: 21 kDa

Observed band size: 23 kDa

False colour image of Western blot: Anti-CYBA antibody (ab191512) staining at 1 µg/ml, shown in green; Mouse anti-Alpha Tubulin [DM1A] ([ab7291](#)) loading control staining at 1/20000 dilution, shown in red. In Western blot, ab191512 was shown to bind specifically to CYBA. A band was observed at 23 kDa in wild-type HEK-293T cell lysates with no signal observed at this size in CYBA knockout cell line [ab266721](#) (knockout cell lysate [ab257405](#)). To

generate this image, wild-type and CYBA knockout HEK-293T cell lysates were analysed. First, samples were run on an SDS-PAGE gel then transferred onto a nitrocellulose membrane. Membranes were blocked in fluorescent western blot (TBS-based) blocking solution before incubation with primary antibodies overnight at 4°C. Blots were washed four times in TBS-T, incubated with secondary antibodies for 1 h at room temperature, washed again four times then imaged. Secondary antibodies used were Goat anti-Rabbit IgG H&L (IRDye® 800CW) preabsorbed (**ab216773**) and Goat anti-Mouse IgG H&L (IRDye® 680RD) preabsorbed (**ab216776**) at 1/20000 dilution.



All lanes : Anti-Cytochrome b245 Light Chain/p22-phox antibody (ab191512)

Lane 1 : MCF7 whole cell lysate

Lane 2 : NIH3T3 whole cell lysate

Lane 3 : PC12 whole cell lysate

Predicted band size: 21 kDa

Please note: All products are "FOR RESEARCH USE ONLY. NOT FOR USE IN DIAGNOSTIC PROCEDURES"

Our Abpromise to you: Quality guaranteed and expert technical support

- Replacement or refund for products not performing as stated on the datasheet
- Valid for 12 months from date of delivery
- Response to your inquiry within 24 hours
- We provide support in Chinese, English, French, German, Japanese and Spanish
- Extensive multi-media technical resources to help you
- We investigate all quality concerns to ensure our products perform to the highest standards

If the product does not perform as described on this datasheet, we will offer a refund or replacement. For full details of the Abpromise, please visit <https://www.abcam.cn/abpromise> or contact our technical team.

Terms and conditions

- Guarantee only valid for products bought direct from Abcam or one of our authorized distributors