

# Anti-Cystatin SN/CST1 antibody ab124281

## 2 图像

### 概述

产品名称	Anti-Cystatin SN/CST1抗体
描述	兔多克隆抗体to Cystatin SN/CST1
宿主	Rabbit
经测试应用	适用于: IHC-P, ICC/IF, ELISA
种属反应性	与反应: Human
免疫原	Synthetic peptide corresponding to Human Cystatin SN/CST1 (internal sequence).
阳性对照	Human prostate tissue. MCF7 cells.
常规说明	<p>The Life Science industry has been in the grips of a reproducibility crisis for a number of years. Abcam is leading the way in addressing this with our range of recombinant monoclonal antibodies and knockout edited cell lines for gold-standard validation. Please check that this product meets your needs before purchasing.</p> <p>If you have any questions, special requirements or concerns, please send us an inquiry and/or contact our Support team ahead of purchase. Recommended alternatives for this product can be found below, along with publications, customer reviews and Q&amp;As</p>

### 性能

形式	Liquid
存放说明	Shipped at 4°C. Upon delivery aliquot and store at -20°C. Avoid repeated freeze / thaw cycles.
存储溶液	pH: 7.40 Preservative: 0.02% Sodium azide Constituents: 50% Glycerol (glycerin, glycerine), 0.88% Sodium chloride, 49% PBS
纯度	Immunogen affinity purified
克隆	多克隆
同种型	IgG

### 应用

**The Abpromise guarantee**      **Abpromise™**承诺保证使用ab124281于以下的经测试应用

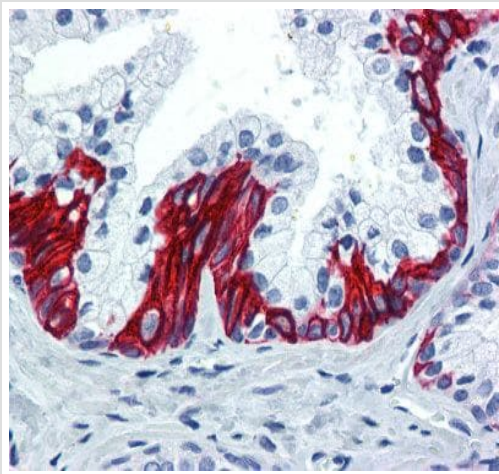
“应用说明”部分下显示的仅为推荐的起始稀释度;实际最佳的稀释度/浓度应由使用者检定。

应用	Ab评论	说明
IHC-P		Use a concentration of 5 µg/ml.
ICC/IF		1/100 - 1/500.
ELISA		Use at an assay dependent concentration.

## 靶标

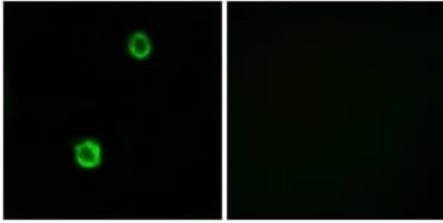
<b>功能</b>	Human saliva appears to contain several cysteine proteinase inhibitors that are immunologically related to cystatin S but that differ in their specificity due to amino acid sequence differences. Cystatin SN, with a pI of 7.5, is a much better inhibitor of papain and dipeptidyl peptidase I than is cystatin S, although both inhibit ficin equally well.
<b>组织特异性</b>	Expressed in submandibular and sublingual saliva but not in parotid saliva (at protein level). Expressed in saliva, tears, urine and seminal fluid.
<b>序列相似性</b>	Belongs to the cystatin family.
<b>细胞定位</b>	Secreted.

## 图片



ab124281, at 5µg/ml, staining Cystatin SN/CST1 in formalin-fixed, paraffin-embedded Human prostate tissue.

Immunohistochemistry (Formalin/PFA-fixed paraffin-embedded sections) - Anti-Cystatin SN/CST1 antibody (ab124281)



Immunofluorescence analysis of MCF7 cells, using ab124281 at 1/100 dilution. The picture on the right is treated with the synthesized peptide.

Immunocytochemistry/ Immunofluorescence - Anti-Cystatin SN/CST1 antibody (ab124281)

**Please note:** All products are "FOR RESEARCH USE ONLY. NOT FOR USE IN DIAGNOSTIC PROCEDURES"

### Our Abpromise to you: Quality guaranteed and expert technical support

---

- Replacement or refund for products not performing as stated on the datasheet
- Valid for 12 months from date of delivery
- Response to your inquiry within 24 hours
- We provide support in Chinese, English, French, German, Japanese and Spanish
- Extensive multi-media technical resources to help you
- We investigate all quality concerns to ensure our products perform to the highest standards

If the product does not perform as described on this datasheet, we will offer a refund or replacement. For full details of the Abpromise, please visit <https://www.abcam.cn/abpromise> or contact our technical team.

### Terms and conditions

---

- Guarantee only valid for products bought direct from Abcam or one of our authorized distributors