

Anti-CYP11B1 antibody [F21 P6 F5] ab55841

2 图像

概述

| | |
|-------|---|
| 产品名称 | Anti-CYP11B1抗体[F21 P6 F5] |
| 描述 | 小鼠单克隆抗体[F21 P6 F5] to CYP11B1 |
| 宿主 | Mouse |
| 经测试应用 | 适用于: WB, IHC-P |
| 种属反应性 | 与反应: Human |
| 免疫原 | Synthetic peptide derived from the C terminus of human CYP450 4F11 |
| 阳性对照 | Liposarcoma tissue, kidney |
| 常规说明 | <p>The Life Science industry has been in the grips of a reproducibility crisis for a number of years. Abcam is leading the way in addressing this with our range of recombinant monoclonal antibodies and knockout edited cell lines for gold-standard validation. Please check that this product meets your needs before purchasing.</p> <p>If you have any questions, special requirements or concerns, please send us an inquiry and/or contact our Support team ahead of purchase. Recommended alternatives for this product can be found below, along with publications, customer reviews and Q&As</p> |

性能

| | |
|------|---|
| 形式 | Liquid |
| 存放说明 | Shipped at 4°C. Upon delivery aliquot and store at -20°C. Avoid freeze / thaw cycles. |
| 存储溶液 | Preservative: 0.08% Sodium azide Constituent: PBS |
| 纯度 | Protein G purified |
| 克隆 | 单克隆 |
| 克隆编号 | F21 P6 F5 |
| 骨髓瘤 | Ag8.653 |
| 同种型 | IgG1 |

应用

The Abpromise guarantee

Abpromise™承诺保证使用ab55841于以下的经测试应用

“应用说明”部分 下显示的仅为推荐的起始稀释度;实际最佳的稀释度/浓度应由使用者检定。

| 应用 | Ab评论 | 说明 |
|-------|------|--|
| WB | | Use a concentration of 1 - 2 µg/ml. Detects a band of approximately 60 kDa (predicted molecular weight: 60 kDa). |
| IHC-P | | Use a concentration of 1 - 5 µg/ml. |

靶标

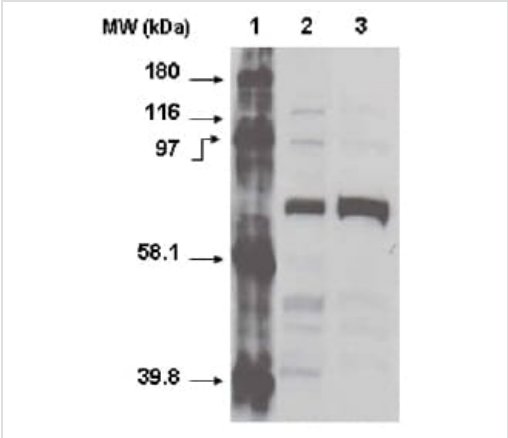
相关性

CYP11B1 is a member of the cytochrome P450 family of cytochrome monooxidases that catalyze many reactions involved in drug metabolism and synthesis of cholesterol, steroids and other lipids. CYP4F11 has catalytic properties towards endogenous eicosanoids as well as some clinically relevant drugs, and is able to metabolize large molecules such as erythromycin.

细胞定位

Endoplasmic reticulum membrane; Single pass membrane protein

图片



Western blot - Anti-CYP11B1 antibody [F21 P6 F5] (ab55841)

All lanes : Anti-CYP11B1 antibody [F21 P6 F5] (ab55841) at 1 µg/ml

Lane 1 : molecular weight markers

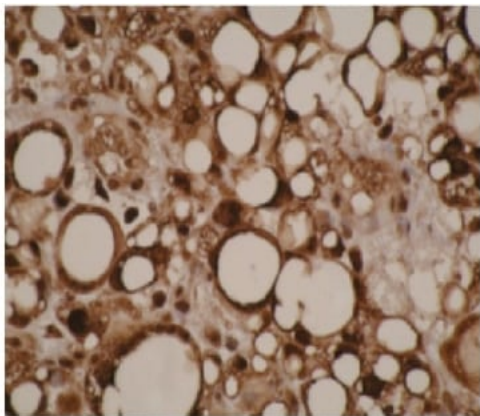
Lane 2 : normal kidney cell lysate

Lane 3 : kidney cancer cell lysate

Lysates/proteins at 20 µg per lane.

Predicted band size: 60 kDa

Observed band size: 60 kDa



ab55841 at 1 µg/ml staining human liposarcoma cells; formalin fixed, paraffin embedded.

Immunohistochemistry (Formalin/PFA-fixed paraffin-embedded sections) - Anti-CYP11A1 antibody [F21 P6 F5] (ab55841)

Please note: All products are "FOR RESEARCH USE ONLY. NOT FOR USE IN DIAGNOSTIC PROCEDURES"

Our Abpromise to you: Quality guaranteed and expert technical support

- Replacement or refund for products not performing as stated on the datasheet
- Valid for 12 months from date of delivery
- Response to your inquiry within 24 hours
- We provide support in Chinese, English, French, German, Japanese and Spanish
- Extensive multi-media technical resources to help you
- We investigate all quality concerns to ensure our products perform to the highest standards

If the product does not perform as described on this datasheet, we will offer a refund or replacement. For full details of the Abpromise, please visit <https://www.abcam.cn/abpromise> or contact our technical team.

Terms and conditions

- Guarantee only valid for products bought direct from Abcam or one of our authorized distributors