


Anti-CYP46A1 antibody ab198889

[1 References](#) [2 图像](#)

概述

产品名称	Anti-CYP46A1抗体
描述	兔多克隆抗体to CYP46A1
宿主	Rabbit
经测试应用	适用于: IHC-P, WB
种属反应性	与反应: Human 预测可用于: Mouse 
免疫原	Synthetic peptide corresponding to Human CYP46A1 (internal sequence). Gene Accession: NP_006659. Database link: Q9Y6A2
阳性对照	Human lymphoma tissue lysate and Human brain tissue.
常规说明	<p>The Life Science industry has been in the grips of a reproducibility crisis for a number of years. Abcam is leading the way in addressing this with our range of recombinant monoclonal antibodies and knockout edited cell lines for gold-standard validation. Please check that this product meets your needs before purchasing.</p> <p>If you have any questions, special requirements or concerns, please send us an inquiry and/or contact our Support team ahead of purchase. Recommended alternatives for this product can be found below, along with publications, customer reviews and Q&As</p>

性能

形式	Liquid
存放说明	Shipped at 4°C. Store at +4°C short term (1-2 weeks). Upon delivery aliquot. Store at -20°C long term. Avoid freeze / thaw cycle.
存储溶液	pH: 7.4 Preservative: 0.05% Sodium azide Constituents: 49% PBS, 50% Glycerol (glycerin, glycerine)
纯度	Immunogen affinity purified
克隆	多克隆
同种型	IgG

应用

The Abpromise guarantee **Abpromise™**承诺保证使用ab198889于以下的经测试应用

“应用说明”部分 下显示的仅为推荐的起始稀释度;实际最佳的稀释度/浓度应由使用者检定。

应用	Ab评论	说明
IHC-P		1/25 - 1/100.
WB		1/200 - 1/1000. Predicted molecular weight: 57 kDa.

靶标

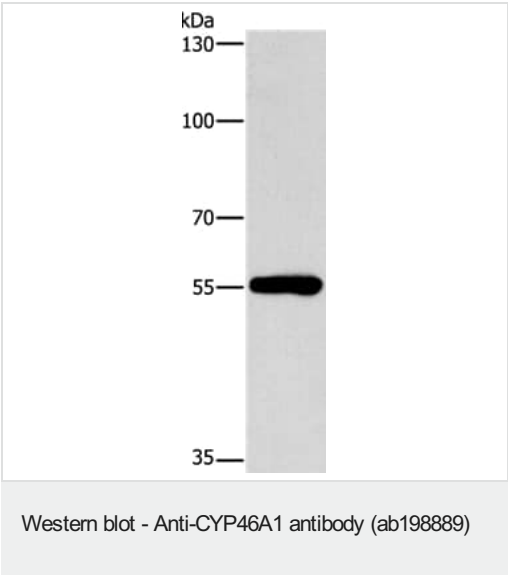
相关性

The Cyp46 gene encodes a member of the cytochrome P450 superfamily of enzymes. The cytochrome P450 proteins are monooxygenases which catalyze many reactions involved in drug metabolism and synthesis of cholesterol, steroids and other lipids. This endoplasmic reticulum protein is expressed exclusively in the brain, where it converts cholesterol to 24S-hydroxycholesterol by adding a hydroxyl group to cholesterol, producing a product that is more soluble than cholesterol and able to be exported from the brain. Cyp46 is also known as 24S-cholesterol hydroxylase

细胞定位

Endoplasmic reticulum

图片

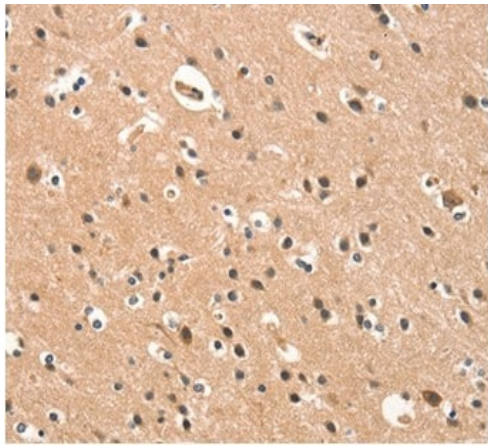


Anti-CYP46A1 antibody (ab198889) at 1/200 dilution + Human lymphoma tissue lysate at 40 µg

Predicted band size: 57 kDa

Exposure time: 1 minute

8% SDS-PAGE



Immunohistochemical analysis of paraffin-embedded Human brain tissue labeling CYP46A1 with ab198889 at 1/15 dilution.

Immunohistochemistry (Formalin/PFA-fixed paraffin-embedded sections) - Anti-CYP46A1 antibody (ab198889)

Please note: All products are "FOR RESEARCH USE ONLY. NOT FOR USE IN DIAGNOSTIC PROCEDURES"

Our Abpromise to you: Quality guaranteed and expert technical support

- Replacement or refund for products not performing as stated on the datasheet
- Valid for 12 months from date of delivery
- Response to your inquiry within 24 hours
- We provide support in Chinese, English, French, German, Japanese and Spanish
- Extensive multi-media technical resources to help you
- We investigate all quality concerns to ensure our products perform to the highest standards

If the product does not perform as described on this datasheet, we will offer a refund or replacement. For full details of the Abpromise, please visit <https://www.abcam.cn/abpromise> or contact our technical team.

Terms and conditions

- Guarantee only valid for products bought direct from Abcam or one of our authorized distributors