

Anti-CYP21A2 antibody ab230327

4 图像

概述

产品名称	Anti-CYP21A2抗体
描述	兔多克隆抗体to CYP21A2
宿主	Rabbit
经测试应用	适用于: IHC-P, ICC/IF, WB, Flow Cyt (Intra)
种属反应性	与反应: Human
免疫原	Synthetic peptide within Human CYP21A2 aa 216-246 conjugated to keyhole limpet haemocyanin. The exact sequence is proprietary. Database link: P08686
阳性对照	IHC-P: Human adrenal tissue. ICC/IF: HEK-293 cells. WB: MDA-MB435 cell lysate. Flow Cyt (Intra): MDA-MB231 cells.
常规说明	<p>The Life Science industry has been in the grips of a reproducibility crisis for a number of years. Abcam is leading the way in addressing this with our range of recombinant monoclonal antibodies and knockout edited cell lines for gold-standard validation. Please check that this product meets your needs before purchasing.</p> <p>If you have any questions, special requirements or concerns, please send us an inquiry and/or contact our Support team ahead of purchase. Recommended alternatives for this product can be found below, along with publications, customer reviews and Q&As</p>

性能

形式	Liquid
存放说明	Shipped at 4°C. Store at +4°C short term (1-2 weeks). Upon delivery aliquot. Store at -20°C long term. Avoid freeze / thaw cycle.
存储溶液	pH: 7.4 Preservative: 0.09% Sodium azide Constituent: PBS
纯度	Ammonium Sulphate Precipitation
克隆	多克隆
同种型	IgG

应用

The Abpromise guarantee **Abpromise™**承诺保证使用ab230327于以下的经测试应用

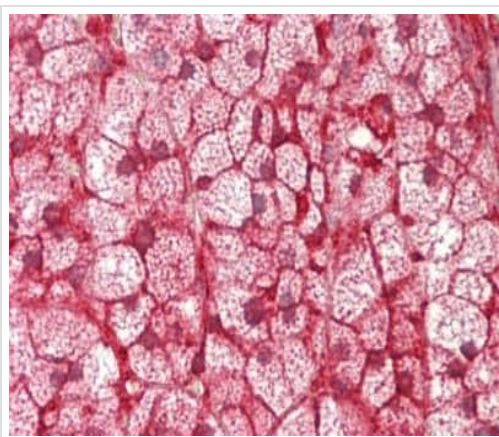
“应用说明”部分 下显示的仅为推荐的起始稀释度;实际最佳的稀释度/浓度应由使用者检定。

应用	Ab评论	说明
IHC-P		1/50 - 1/100.
ICC/IF		1/10 - 1/50.
WB		1/1000. Predicted molecular weight: 56 kDa.
Flow Cyt (Intra)		1/10 - 1/50.

靶标

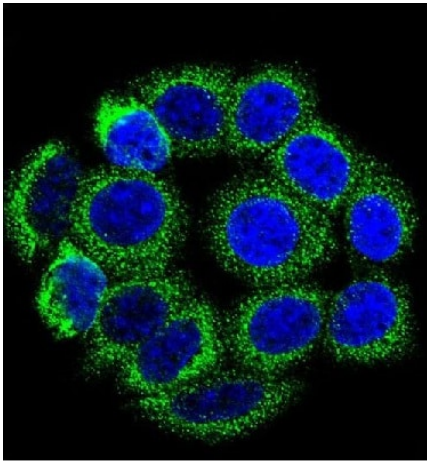
功能	Specifically catalyzes the 21-hydroxylation of steroids. Required for the adrenal synthesis of mineralocorticoids and glucocorticoids.
疾病相关	Adrenal hyperplasia 3
序列相似性	Belongs to the cytochrome P450 family.
结构域	The leucine-rich hydrophobic amino acid N-terminal region probably helps to anchor the protein to the microsomal membrane.
细胞定位	Endoplasmic reticulum membrane. Microsome membrane.

图片



Formalin-fixed, paraffin-embedded human adrenal tissue stained for CYP21A2 using ab230327 at 1/50 dilution in immunohistochemical analysis.

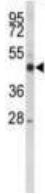
Immunohistochemistry (Formalin/PFA-fixed paraffin-embedded sections) - Anti-CYP21A2 antibody (ab230327)



Immunocytochemistry/ Immunofluorescence - Anti-CYP21A2 antibody (ab230327)

HEK-293 (human epithelial cell line from embryonic kidney) cells stained for CYP21A2 using ab230327 at 1/10 dilution, followed by Alexa Fluor 488-conjugated goat anti-rabbit IgG (green) in confocal immunofluorescence.

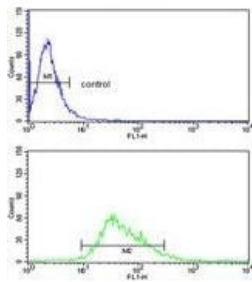
Nuclear counterstain: DAPI (blue).



Western blot - Anti-CYP21A2 antibody (ab230327)

Anti-CYP21A2 antibody (ab230327) at 1/1000 dilution + MDA-MB-435S (Human ductal carcinoma cell line) cell lysate at 35 µg

Predicted band size: 56 kDa



Flow Cytometry (Intracellular) - Anti-CYP21A2 antibody (ab230327)

Intracellular flow cytometric analysis of MDA-MB231 (human breast adenocarcinoma cell line) cells labeling CYP21A2 with ab230327 at 1/10 dilution (bottom histogram) compared to a negative control cell (top histogram). FITC-conjugated goat-anti-rabbit secondary antibodies were used for the analysis.

Please note: All products are "FOR RESEARCH USE ONLY. NOT FOR USE IN DIAGNOSTIC PROCEDURES"

Our Abpromise to you: Quality guaranteed and expert technical support

- Replacement or refund for products not performing as stated on the datasheet
- Valid for 12 months from date of delivery
- Response to your inquiry within 24 hours

- We provide support in Chinese, English, French, German, Japanese and Spanish
- Extensive multi-media technical resources to help you
- We investigate all quality concerns to ensure our products perform to the highest standards

If the product does not perform as described on this datasheet, we will offer a refund or replacement. For full details of the Abpromise, please visit <https://www.abcam.cn/abpromise> or contact our technical team.

Terms and conditions

- Guarantee only valid for products bought direct from Abcam or one of our authorized distributors