

### Anti-CYP1A1 antibody ab124295

#### 1 图像

#### 概述

产品名称	Anti-CYP1A1抗体
描述	兔多克隆抗体to CYP1A1
宿主	Rabbit
经测试应用	适用于: WB
种属反应性	与反应: Human 预测可用于: Dog, Pig, Chimpanzee, Macaque monkey, Chinese hamster, Orangutan 
免疫原	Synthetic peptide within Human CYP1A1 aa 50-150 conjugated to keyhole limpet haemocyanin. The exact sequence is proprietary. (Peptide available as <a href="#">ab155750</a> )
阳性对照	This antibody gave a positive signal in both Human Lung and Placenta tissue lysates.
常规说明	<p>The Life Science industry has been in the grips of a reproducibility crisis for a number of years. Abcam is leading the way in addressing this with our range of recombinant monoclonal antibodies and knockout edited cell lines for gold-standard validation. Please check that this product meets your needs before purchasing.</p> <p>If you have any questions, special requirements or concerns, please send us an inquiry and/or contact our Support team ahead of purchase. Recommended alternatives for this product can be found below, along with publications, customer reviews and Q&amp;As</p>

#### 性能

形式	Liquid
存放说明	Shipped at 4°C. Store at +4°C short term (1-2 weeks). Upon delivery aliquot. Store at -20°C or -80°C. Avoid freeze / thaw cycle.
存储溶液	pH: 7.40 Preservative: 0.02% Sodium azide Constituent: PBS  Batches of this product that have a concentration < 1mg/ml may have BSA added as a stabilising agent. If you would like information about the formulation of a specific lot, please contact our scientific support team who will be happy to help.
纯度	Immunogen affinity purified

克隆

多克隆

同种型

IgG

应用

The Abpromise guarantee

Abpromise™承诺保证使用ab124295于以下的经测试应用

“应用说明”部分 下显示的仅为推荐的起始稀释度;实际最佳的稀释度/浓度应由使用者检定。

应用	Ab评论	说明
WB		Use a concentration of 1 µg/ml. Detects a band of approximately 73 kDa (predicted molecular weight: 58 kDa).

靶标

功能

Cytochromes P450 are a group of heme-thiolate monooxygenases. In liver microsomes, this enzyme is involved in an NADPH-dependent electron transport pathway. It oxidizes a variety of structurally unrelated compounds, including steroids, fatty acids, and xenobiotics.

组织特异性

Lung, lymphocytes and placenta.

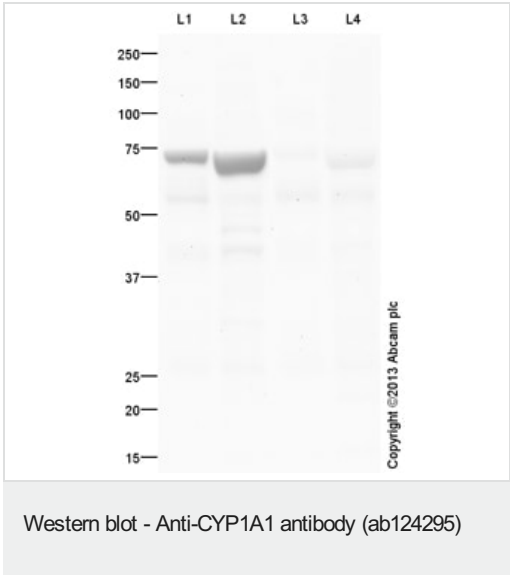
序列相似性

Belongs to the cytochrome P450 family.

细胞定位

Endoplasmic reticulum membrane. Microsome membrane.

图片



**All lanes :** Anti-CYP1A1 antibody (ab124295) at 1 µg/ml

**Lane 1 :** Lung (Human) Tissue Lysate

**Lane 2 :** Human placenta tissue lysate - total protein ([ab29745](#))

**Lane 3 :** Lung (Human) Tissue Lysate with Immunising peptide at 1 µg/ml

**Lane 4 :** Human placenta tissue lysate - total protein ([ab29745](#)) with Immunising peptide at 1 µg/ml

Lysates/proteins at 10 µg per lane.

**Secondary**

**All lanes :** Goat Anti-Rabbit IgG H&L (HRP) ([ab97051](#)) at 1/10000 dilution

Developed using the ECL technique.

Performed under reducing conditions.

**Predicted band size:** 58 kDa

**Observed band size:** 73 kDa

**Additional bands at:** 48 kDa, 55 kDa. We are unsure as to the identity of these extra bands.

**Exposure time:** 90 seconds

This blot was produced using a 10% Bis-tris gel under the MOPS buffer system. The gel was run at 200V for 50 minutes before being transferred onto a Nitrocellulose membrane at 30V for 70 minutes. The membrane was then blocked for an hour using 5% Bovine Serum Albumin before being incubated with ab124295 overnight at 4°C. Antibody binding was detected using an anti-rabbit antibody conjugated to HRP, and visualised using ECL development solution.

**Please note:** All products are "FOR RESEARCH USE ONLY. NOT FOR USE IN DIAGNOSTIC PROCEDURES"

#### **Our Abpromise to you: Quality guaranteed and expert technical support**

---

- Replacement or refund for products not performing as stated on the datasheet
- Valid for 12 months from date of delivery
- Response to your inquiry within 24 hours
- We provide support in Chinese, English, French, German, Japanese and Spanish
- Extensive multi-media technical resources to help you
- We investigate all quality concerns to ensure our products perform to the highest standards

If the product does not perform as described on this datasheet, we will offer a refund or replacement. For full details of the Abpromise, please visit <https://www.abcam.cn/abpromise> or contact our technical team.

#### **Terms and conditions**

---

- Guarantee only valid for products bought direct from Abcam or one of our authorized distributors