


### Anti-Cyclophilin A antibody ab3563

★★★★★ [4 Abreviews](#) [12 References](#) [7 图像](#)

#### 概述

产品名称	Anti-Cyclophilin A抗体
描述	兔多克隆抗体to Cyclophilin A
宿主	Rabbit
特异性	Detects recombinant human Cyclophilin A (CyPA), but does not detect endogenous levels of CyPA.
经测试应用	适用于: ICC/IF, WB
种属反应性	与反应: Mouse, Human 预测可用于: Cow, Cat, Pig, Chimpanzee, Rhesus monkey, African green monkey 
免疫原	Recombinant full length protein corresponding to Human Cyclophilin A. Purified recombinant Human Cyclophilin A.
阳性对照	WB: CyPA; A549, U-87 MG, Jurkat cells; NIH/3T3, HeLa, mouse lung, colon and stomach tissue; HepG2, K562. ICC/IF: A431, HeLa cells
常规说明	<p>The Life Science industry has been in the grips of a reproducibility crisis for a number of years. Abcam is leading the way in addressing this with our range of recombinant monoclonal antibodies and knockout edited cell lines for gold-standard validation. Please check that this product meets your needs before purchasing.</p> <p>If you have any questions, special requirements or concerns, please send us an inquiry and/or contact our Support team ahead of purchase. Recommended alternatives for this product can be found below, along with publications, customer reviews and Q&amp;As</p>

#### 性能

形式	Liquid
存放说明	Shipped at 4°C. Store at +4°C short term (1-2 weeks). Upon delivery aliquot. Store at -20°C or -80°C. Avoid freeze / thaw cycle.
存储溶液	Preservative: 0.05% Sodium azide Constituent: 99% PBS
纯度	IgG fraction
克隆	多克隆
同种型	IgG

应用

The Abpromise guarantee      **Abpromise™**承诺保证使用ab3563于以下的经测试应用

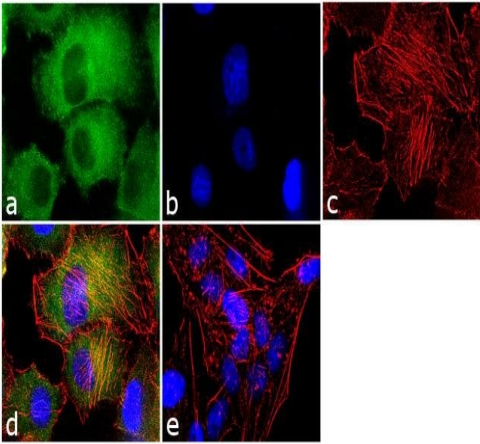
“应用说明”部分 下显示的仅为推荐的起始稀释度;实际最佳的稀释度/浓度应由使用者检定。

应用	Ab评论	说明
ICC/IF		Use a concentration of 1 µg/ml.
WB	★★★★★ (2)	1/300.

靶标

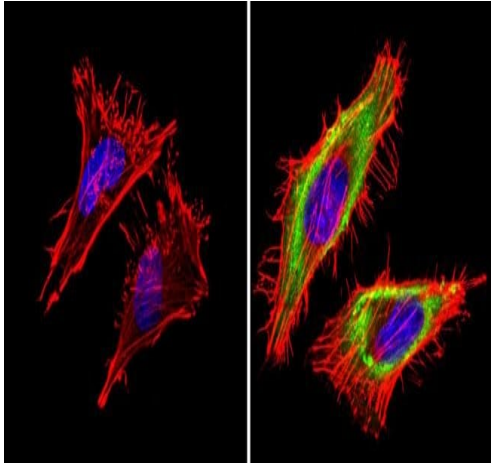
功能	PPlases accelerate the folding of proteins. It catalyzes the cis-trans isomerization of proline imidic peptide bonds in oligopeptides.
序列相似性	Belongs to the cyclophilin-type PPlase family. PPlase A subfamily. Contains 1 PPlase cyclophilin-type domain.
细胞定位	Cytoplasm.

图片



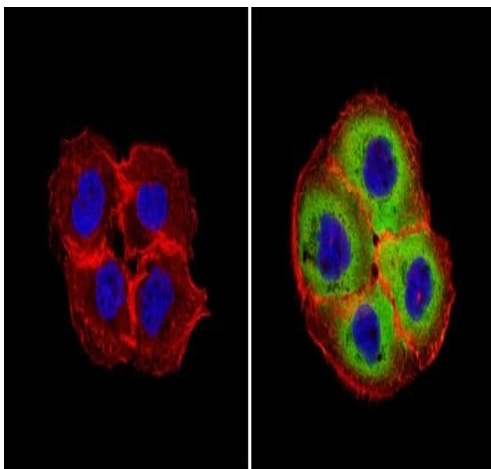
Immunocytochemistry/ Immunofluorescence - Anti-Cyclophilin A antibody (ab3563)

Immunocytochemistry analysis of 4% paraformaldehyde-fixed 0.1% Triton X-100 permeabilized A431 cells staining Cyclophilin A with ab3563 at 1/250 dilution and DyLight-conjugated secondary antibody (green). F-actin was stained with red Rhodamine Phalloidin, and the nuclear counterstain was SlowFade® Gold Antifade Mountant with DAPI (blue). Negative control (e) is where no primary antibody was used.



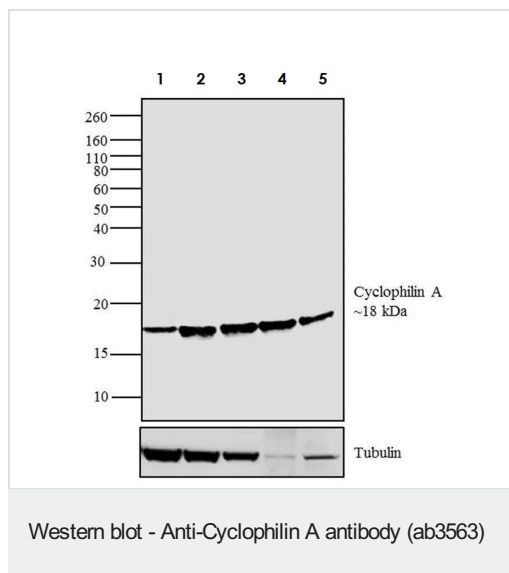
Immunocytochemistry/ Immunofluorescence - Anti-Cyclophilin A antibody (ab3563)

Immunocytochemistry analysis of formalin-fixed 0.1% Triton X-100 permeabilized HeLa cells staining Cyclophilin A with ab3563 at 1/200 dilution and DyLight-conjugated secondary antibody (green). F-actin was stained with red phalloidin, and the nuclear counterstain was DAPI (blue).



Immunocytochemistry/ Immunofluorescence - Anti-Cyclophilin A antibody (ab3563)

Immunocytochemistry analysis of formalin-fixed 0.1% Triton X-100 permeabilized A431 cells staining Cyclophilin A with ab3563 at 1/200 dilution and DyLight-conjugated secondary antibody (green). F-actin was stained with red phalloidin, and the nuclear counterstain was DAPI (blue).



**All lanes :** Anti-Cyclophilin A antibody (ab3563) at 1/100 dilution

**Lane 1 :** NIH/3T3 whole cell lysate

**Lane 2 :** HeLa whole cell lysate

**Lane 3 :** mouse lung tissue lysate

**Lane 4 :** mouse colon tissue lysate

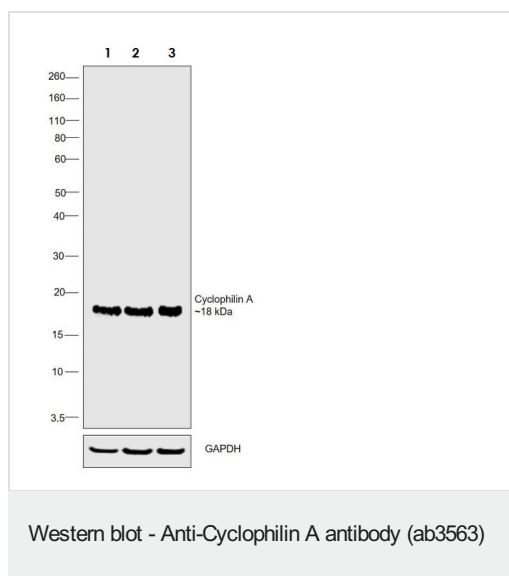
**Lane 5 :** mouse stomach tissue lysate

Lysates/proteins at 30 µg per lane.

### Secondary

**All lanes :** Goat anti-Rabbit IgG (H+L) Superclonal™ Secondary Antibody, HRP conjugate at 1/2500 dilution

Developed using the ECL technique.



**All lanes :** Anti-Cyclophilin A antibody (ab3563) at 1/3000 dilution

**Lane 1 :** A549 (human lung carcinoma cell line) whole cell extract

**Lane 2 :** U-87 MG (human glioblastoma-astrocytoma epithelial cell line) whole cell extract

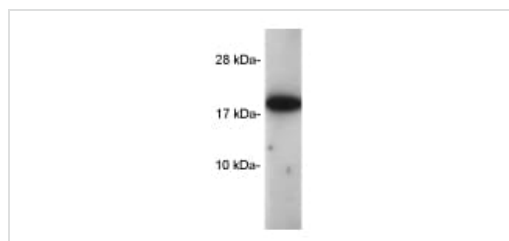
**Lane 3 :** Jurkat (human T cell leukemia cell line from peripheral blood) whole cell extract

Lysates/proteins at 30 µg per lane.

### Secondary

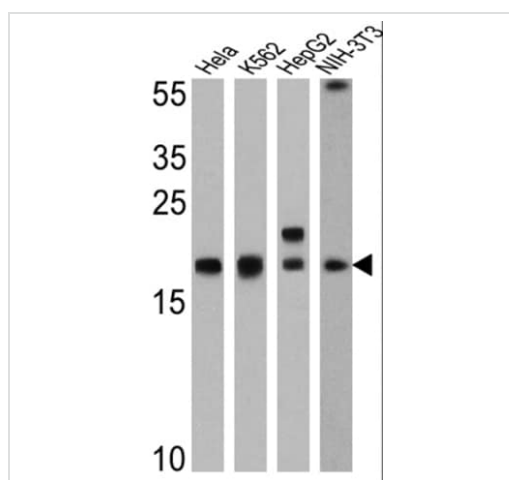
**All lanes :** Goat anti-Rabbit IgG (H+L) Superclonal™ Recombinant Secondary Antibody, at 1/4000 dilution

Developed using the ECL technique.



Western blot - Anti-Cyclophilin A antibody (ab3563)

ab3563 at 1/300 dilution detecting 0.5ug recombinant human cyclophilin A by Western Blot (ECL).



Western blot - Anti-Cyclophilin A antibody (ab3563)

**All lanes** : Anti-Cyclophilin A antibody (ab3563) at 1/500 dilution

**Lane 1** : HeLa cell lysate

**Lane 2** : K562 cell lysate

**Lane 3** : HepG2 cell lysate

**Lane 4** : NIH-3T3

Lysates/proteins at 25 µg per lane.

**Observed band size:** 18 kDa

**Please note:** All products are "FOR RESEARCH USE ONLY. NOT FOR USE IN DIAGNOSTIC PROCEDURES"

### Our Abpromise to you: Quality guaranteed and expert technical support

- Replacement or refund for products not performing as stated on the datasheet
- Valid for 12 months from date of delivery
- Response to your inquiry within 24 hours
- We provide support in Chinese, English, French, German, Japanese and Spanish
- Extensive multi-media technical resources to help you
- We investigate all quality concerns to ensure our products perform to the highest standards

If the product does not perform as described on this datasheet, we will offer a refund or replacement. For full details of the Abpromise, please visit <https://www.abcam.cn/abpromise> or contact our technical team.

### Terms and conditions

- Guarantee only valid for products bought direct from Abcam or one of our authorized distributors

