

Anti-Cyclophilin 40 antibody ab3562

7 References **5 图像**

概述

产品名称	Anti-Cyclophilin 40抗体
描述	兔多克隆抗体to Cyclophilin 40
宿主	Rabbit
特异性	Detects cyclophilin 40 (CyP 40) from Human and Rat tissues and cells. This antibody does not cross-react with CyPA.
经测试应用	适用于: WB, IHC-P, ICC/IF
种属反应性	与反应: Rat, Human
免疫原	Synthetic peptide corresponding to Human Cyclophilin 40 aa 356-370. Sequence: AQKDKEKAVYAKMFA



Run BLAST with



Run BLAST with

常规说明

The Life Science industry has been in the grips of a reproducibility crisis for a number of years. Abcam is leading the way in addressing this with our range of recombinant monoclonal antibodies and knockout edited cell lines for gold-standard validation. Please check that this product meets your needs before purchasing.

If you have any questions, special requirements or concerns, please send us an inquiry and/or contact our Support team ahead of purchase. Recommended alternatives for this product can be found below, along with publications, customer reviews and Q&As

性能

形式	Liquid
存放说明	Shipped at 4°C. Store at +4°C short term (1-2 weeks). Upon delivery aliquot. Store at -20°C or -80°C. Avoid freeze / thaw cycle.
存储溶液	Preservative: 0.05% Sodium azide Constituent: 99% PBS
纯度	Proprietary Purification
Primary antibody说明	Immunophilins are a family of soluble cytosolic receptors capable of binding to one of two major immunosuppressant agents: cyclosporin A (CsA) or FK506. Proteins that bind FK506 are termed FK506 Binding Proteins (FKBPs) and those that bind cyclosporin A are called cyclophilins (CyP). Both CyP:CsA and FKBP:FK506 complexes have been shown to inhibit calcineurin, a calcium

and calmodulin dependent protein phosphatase which has been implicated as an important signaling enzyme in T-cell activation, providing a possible mechanism of immunosuppression by CsA and FK506. Immunophilins function as peptidyl prolyl cis-trans-isomerases (PPlase) whose activity is inhibited by their respective immunosuppressant compounds. As PPlase's, immunophilins accelerate folding of some proteins both in vivo and in vitro by catalyzing slow steps in the initial folding and rearrangement of proline containing proteins. CyP 40, a 40 kDa protein, shares significant homology with smaller CyPA (CyP 18) and FKBP59. CyP 40 exhibits the characteristic CsA binding and isomerase activity of CyP 18, though these activities appear to be less with CyP 40 than with CyP 18. Like FKBP59, CyP 40 has been found in progesterone receptor complexes. CyP 40 is expressed at similar levels in many tissues.

克隆 多克隆
同种型 IgG

应用

The Abpromise guarantee **Abpromise™** 承诺保证使用ab3562于以下的经测试应用

“应用说明”部分 下显示的仅为推荐的起始稀释度;实际最佳的稀释度/浓度应由使用者检定。

应用	Ab评论	说明
WB		1/1000.
IHC-P		Use at an assay dependent concentration.
ICC/IF		1/200.

靶标

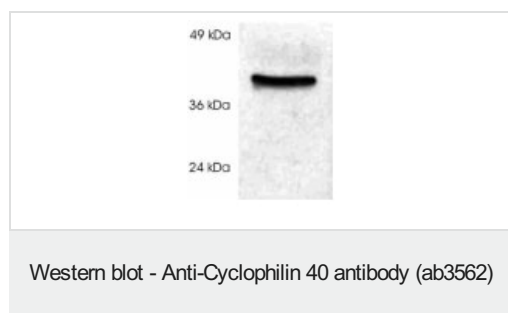
功能 PPlases accelerate the folding of proteins. It catalyzes the cis-trans isomerization of proline imidic peptide bonds in oligopeptides.

组织特异性 Widely expressed.

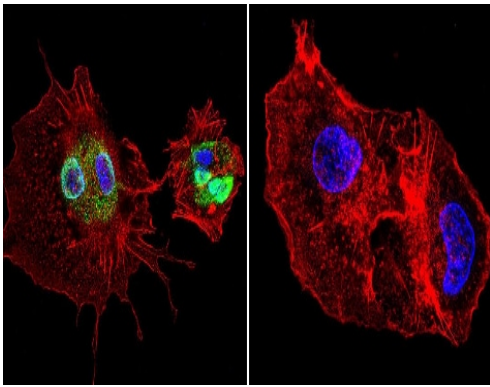
序列相似性 Belongs to the cyclophilin-type PPlase family. PPlase D subfamily.
Contains 1 PPlase cyclophilin-type domain.
Contains 3 TPR repeats.

细胞定位 Cytoplasm.

图片

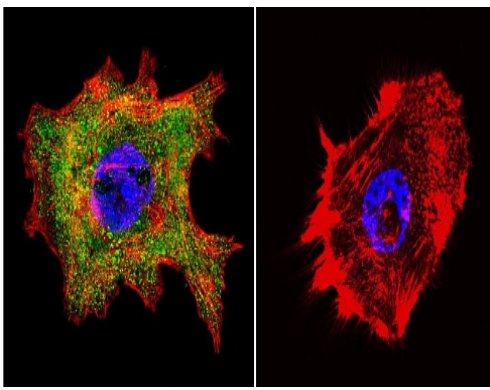


ab3562 at a dilution of 1/1000 staining Cyp 40 in Rat spleen lysate by Western blot.



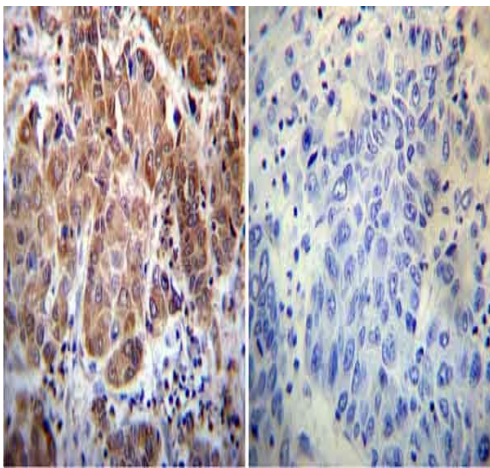
Immunocytochemistry/ Immunofluorescence - Anti-Cyclophilin 40 antibody (ab3562)

Immunocytochemistry/Immunofluorescence analysis of HepG2 cells labeling Cyclophilin 40 (green) with ab3562 at 1/200. F-Actin staining with Phalloidin (red) and nuclei with DAPI (blue). Cells were fixed with formaldehyde and incubated with the primary antibody overnight at 4°C. A DyLight 488-conjugated secondary antibody was used. 60X magnification. Right - negative control.



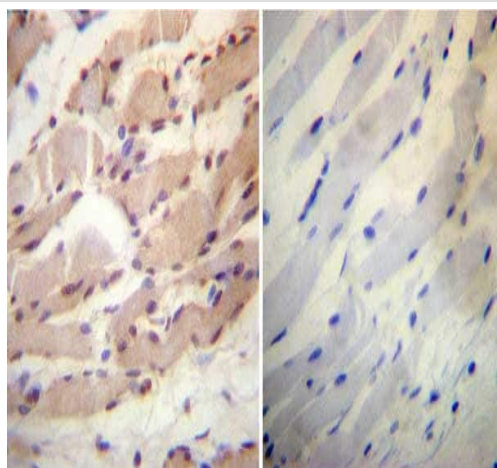
Immunocytochemistry/ Immunofluorescence - Anti-Cyclophilin 40 antibody (ab3562)

Immunocytochemistry/Immunofluorescence analysis of A431 cells labeling Cyclophilin 40 (green) with ab3562 at 1/200. F-Actin staining with Phalloidin (red) and nuclei with DAPI (blue). Cells were fixed with formaldehyde and incubated with the primary antibody overnight at 4°C. A DyLight 488-conjugated secondary antibody was used. 60X magnification. Right - negative control.



Immunohistochemistry (Formalin/PFA-fixed paraffin-embedded sections) - Anti-Cyclophilin 40 antibody (ab3562)

Immunohistochemistry was performed on both normal and cancer biopsies of deparaffinized Human hepatocarcinoma tissue. To expose target proteins, heat induced antigen retrieval was performed using 10mM sodium citrate (pH 6.0) buffer, microwaved for 8-15 minutes. Following antigen retrieval tissues were blocked in 3% BSA-PBS for 30 minutes at room temperature. Tissues were then probed with ab3562 or without primary antibody (negative control) overnight at 4°C in a humidified chamber. Tissues were washed extensively with PBST and endogenous peroxidase activity was quenched with a peroxidase suppressor. Detection was performed using a biotin-conjugated secondary antibody and SA-HRP, followed by colorimetric detection using DAB. Tissues were counterstained with hematoxylin and prepped for mounting.



Immunohistochemistry (Formalin/PFA-fixed paraffin-embedded sections) - Anti-Cyclophilin 40 antibody (ab3562)

Immunohistochemistry was performed on both normal and cancer biopsies of deparaffinized Human skeletal muscle tissue. To expose target proteins, heat induced antigen retrieval was performed using 10mM sodium citrate (pH 6.0) buffer, microwaved for 8-15 minutes. Following antigen retrieval tissues were blocked in 3% BSA-PBS for 30 minutes at room temperature. Tissues were then probed at a dilution of 1/100 with a rabbit polyclonal antibody recognizing Cyclophilin D (ab3562) or without primary antibody (negative control) overnight at 4°C in a humidified chamber. Tissues were washed extensively with PBST and endogenous peroxidase activity was quenched with a peroxidase suppressor. Detection was performed using a biotin-conjugated secondary antibody and SA-HRP, followed by colorimetric detection using DAB. Tissues were counterstained with hematoxylin and prepped for mounting.

Please note: All products are "FOR RESEARCH USE ONLY. NOT FOR USE IN DIAGNOSTIC PROCEDURES"

Our Abpromise to you: Quality guaranteed and expert technical support

- Replacement or refund for products not performing as stated on the datasheet
- Valid for 12 months from date of delivery
- Response to your inquiry within 24 hours
- We provide support in Chinese, English, French, German, Japanese and Spanish
- Extensive multi-media technical resources to help you
- We investigate all quality concerns to ensure our products perform to the highest standards

If the product does not perform as described on this datasheet, we will offer a refund or replacement. For full details of the Abpromise, please visit <https://www.abcam.cn/abpromise> or contact our technical team.

Terms and conditions

- Guarantee only valid for products bought direct from Abcam or one of our authorized distributors