


Anti-Cyclin Y antibody ab114086

2 References **1 图像**

概述

产品名称	Anti-Cyclin Y抗体
描述	兔多克隆抗体to Cyclin Y
宿主	Rabbit
经测试应用	适用于: WB
种属反应性	与反应: Mouse, Human 预测可用于: Rabbit, Horse, Guinea pig, Cow, Dog, Chimpanzee, Rhesus monkey, Gorilla, Orangutan, Bat 
免疫原	Synthetic peptide corresponding to Human Cyclin Y. Between aa 291 and 341 Database link: Q8ND76
阳性对照	HeLa, 293T, NIH 3T3 and MCF7 whole cell lysates
常规说明	<p>The Life Science industry has been in the grips of a reproducibility crisis for a number of years. Abcam is leading the way in addressing this with our range of recombinant monoclonal antibodies and knockout edited cell lines for gold-standard validation. Please check that this product meets your needs before purchasing.</p> <p>If you have any questions, special requirements or concerns, please send us an inquiry and/or contact our Support team ahead of purchase. Recommended alternatives for this product can be found below, along with publications, customer reviews and Q&As</p>

性能

形式	Liquid
存放说明	Shipped at 4°C. Upon delivery aliquot and store at -20°C. Avoid freeze / thaw cycles.
存储溶液	pH: 7 Preservative: 0.09% Sodium azide Constituent: 99% Tris citrate/phosphate
纯度	pH 7-8 Immunogen affinity purified
纯化说明	ab114086 was affinity purified using an epitope specific to Cyclin Y immobilized on solid support.
克隆	多克隆

同种型

IgG

应用

The Abpromise guarantee

Abpromise™承诺保证使用ab114086于以下的经测试应用

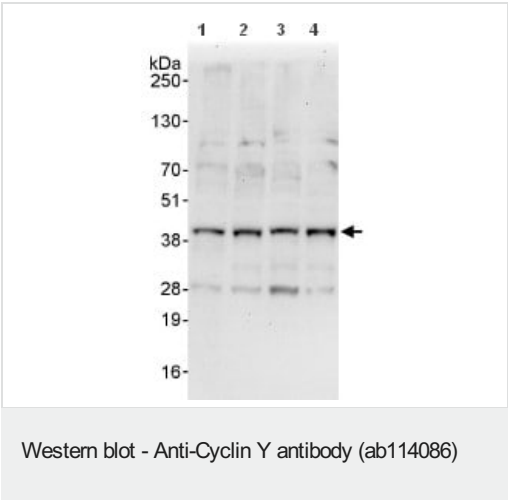
“应用说明”部分 下显示的仅为推荐的起始稀释度;实际最佳的稀释度/浓度应由使用者检定。

应用	Ab评论	说明
WB		1/500 - 1/2500. Predicted molecular weight: 39 kDa.

靶标

功能	Positive regulatory subunit of the cyclin-dependent kinases CDK14/PFTK1 and CDK16. Acts as a cell-cycle regulator of Wnt signaling pathway during G2/M phase by recruiting CDK14/PFTK1 to the plasma membrane and promoting phosphorylation of LRP6, leading to the activation of the Wnt signaling pathway. Recruits CDK16 to the plasma membrane. Isoform 3 might play a role in the activation of MYC-mediated transcription.
组织特异性	Widely expressed.
序列相似性	Belongs to the cyclin family. Cyclin Y subfamily. Contains 1 cyclin N-terminal domain.
发展阶段	Enriched at G2/M.
翻译后修饰	Ubiquitinated; leading to its degradation. Heavily phosphorylated. Phosphorylation at Ser-71 and Ser-73 by CDK14 is enhanced during the G2 and M cell cycle phases, and creates a phosphodegron triggering SCF-dependent ubiquitination.
细胞定位	Nucleus and Cell membrane.

图片



All lanes : Anti-Cyclin Y antibody (ab114086) at 1 µg/ml

- Lane 1 : HeLa whole cell lysate
- Lane 2 : 293T whole cell lysate
- Lane 3 : NIH3T3 whole cell lysate
- Lane 4 : MCF7 whole cell lysate

Lysates/proteins at 50 µg per lane.

Predicted band size: 39 kDa

Please note: All products are "FOR RESEARCH USE ONLY. NOT FOR USE IN DIAGNOSTIC PROCEDURES"

Our Abpromise to you: Quality guaranteed and expert technical support

- Replacement or refund for products not performing as stated on the datasheet
- Valid for 12 months from date of delivery
- Response to your inquiry within 24 hours

- We provide support in Chinese, English, French, German, Japanese and Spanish
- Extensive multi-media technical resources to help you
- We investigate all quality concerns to ensure our products perform to the highest standards

If the product does not perform as described on this datasheet, we will offer a refund or replacement. For full details of the Abpromise, please visit <https://www.abcam.cn/abpromise> or contact our technical team.

Terms and conditions

- Guarantee only valid for products bought direct from Abcam or one of our authorized distributors