


# Anti-Cyclin T2/CCNT2 antibody ab34912

## 1 图像

### 概述

|       |   |
|-------|---|
| 产品名称  | Anti-Cyclin T2/CCNT2抗体  |
| 描述    | 兔多克隆抗体to Cyclin T2/CCNT2  |
| 宿主    | Rabbit  |
| 特异性   | ab34912 recognises Cyclin T2/CCNT2 isoforms a and b.  |
| 经测试应用 | 适用于: WB   |
| 种属反应性 | 与反应: Human<br>预测可用于: Mouse, Rat, Cow, Dog    |
| 免疫原   | Recombinant fragment corresponding to Human Cyclin T2/CCNT2 aa 1-584.   |
| 阳性对照  | WB: HeLa whole cell lysate  |
| 常规说明  | <p>The Life Science industry has been in the grips of a reproducibility crisis for a number of years. Abcam is leading the way in addressing this with our range of recombinant monoclonal antibodies and knockout edited cell lines for gold-standard validation. Please check that this product meets your needs before purchasing.</p> <p>If you have any questions, special requirements or concerns, please send us an inquiry and/or contact our Support team ahead of purchase. Recommended alternatives for this product can be found below, along with publications, customer reviews and Q&amp;As</p> |

### 性能

|      |   |
|------|---|
| 形式   | Liquid  |
| 存放说明 | Shipped at 4°C. Upon delivery aliquot and store at -20°C. Avoid freeze / thaw cycles.     |
| 存储溶液 | Preservative: 0.01% Sodium azide<br>Constituent: Whole serum                              |
| 纯度   | Whole antiserum   |
| 纯化说明 | This antibody was prepared from monospecific antiserum by delipidation and defibrination. |
| 克隆   | 多克隆   |
| 同种型  | IgG   |

### 应用

**The Abpromise guarantee**      **Abpromise™**承诺保证使用ab34912于以下的经测试应用

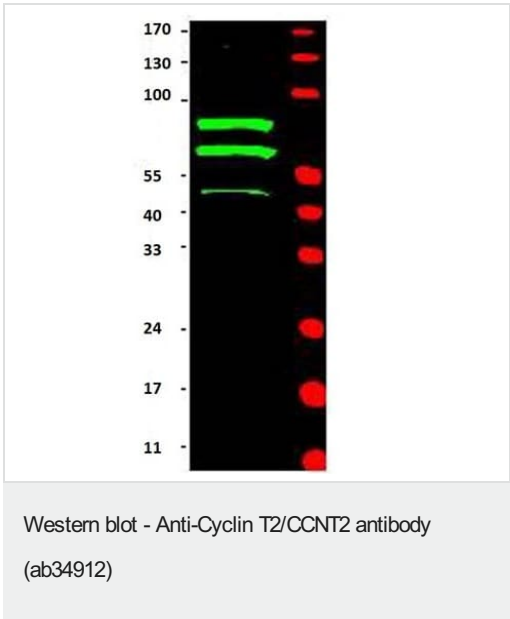
“应用说明”部分 下显示的仅为推荐的起始稀释度;实际最佳的稀释度/浓度应由使用者检定。

| 应用 | Ab评论 | 说明   |
|----|------|--|
| WB |      | 1/500 - 1/2000. Detects a band of approximately 74, 81 kDa (predicted molecular weight: 74, 81 kDa). |

**靶标**

|       |  |
|-------|--|
| 功能    | Regulatory subunit of the cyclin-dependent kinase pair (CDK9/cyclin T) complex, also called positive transcription elongation factor B (P-TEFB), which is proposed to facilitate the transition from abortive to production elongation by phosphorylating the CTD (carboxy-terminal domain) of the large subunit of RNA polymerase II (RNAP II). |
| 组织特异性 | Ubiquitously expressed.  |
| 序列相似性 | Belongs to the cyclin family. Cyclin C subfamily.  |
| 细胞定位  | Nucleus.   |

**图片**



Anti-Cyclin T2/CCNT2 antibody (ab34912) at 1/500 dilution + HeLa cell lysate

**Predicted band size:** 74, 81 kDa

**Please note:** All products are "FOR RESEARCH USE ONLY. NOT FOR USE IN DIAGNOSTIC PROCEDURES"

**Our Abpromise to you: Quality guaranteed and expert technical support**

- Replacement or refund for products not performing as stated on the datasheet
- Valid for 12 months from date of delivery
- Response to your inquiry within 24 hours
- We provide support in Chinese, English, French, German, Japanese and Spanish

- Extensive multi-media technical resources to help you
- We investigate all quality concerns to ensure our products perform to the highest standards

If the product does not perform as described on this datasheet, we will offer a refund or replacement. For full details of the Abpromise, please visit <https://www.abcam.cn/abpromise> or contact our technical team.

#### **Terms and conditions**

---

- Guarantee only valid for products bought direct from Abcam or one of our authorized distributors