

### Anti-Cyclin T2/CCNT2 antibody [2128C1a] ab50979

[3 References](#) [2 图像](#)

#### 概述

产品名称	Anti-Cyclin T2/CCNT2抗体[2128C1a]
描述	小鼠单克隆抗体[2128C1a] to Cyclin T2/CCNT2
宿主	Mouse
经测试应用	适用于: WB
种属反应性	与反应: Human, Recombinant fragment
免疫原	Recombinant fragment corresponding to Human Cyclin T2/CCNT2 (C terminal). Database link: <a href="#">O60583</a>
表位	ab50979 was purified using protein G column chromatography from culture supernatant of hybridoma cultured in a medium containing bovine IgG-depleted (approximately 95%) fetal bovine serum.
常规说明	<p>This antibody recognizes Cyclin T2a and T2b since it is made by immunogen-peptide that is common domain from both protein.</p> <p>The Life Science industry has been in the grips of a reproducibility crisis for a number of years. Abcam is leading the way in addressing this with our range of recombinant monoclonal antibodies and knockout edited cell lines for gold-standard validation. Please check that this product meets your needs before purchasing.</p> <p>If you have any questions, special requirements or concerns, please send us an inquiry and/or contact our Support team ahead of purchase. Recommended alternatives for this product can be found below, along with publications, customer reviews and Q&amp;As</p>

#### 性能

形式	Liquid
存放说明	Shipped at 4°C. Store at +4°C short term (1-2 weeks). Upon delivery aliquot. Store at -20°C long term.
存储溶液	pH: 7.40 Preservative: 0.05% Sodium azide Constituents: 0.03% Potassium phosphate, 0.812% Sodium chloride, 0.1312% Sodium phosphate, 0.0225% Potassium chloride, 1% BSA, PBS
纯度	Protein G purified
克隆	单克隆

克隆编号 2128C1a  
同种型 IgG1

## 应用

**The Abpromise guarantee** **Abpromise™**承诺保证使用ab50979于以下的经测试应用

“应用说明”部分 下显示的仅为推荐的起始稀释度;实际最佳的稀释度/浓度应由使用者检定。

应用	Ab评论	说明
WB		Use at an assay dependent concentration. Predicted molecular weight: 81 kDa.

## 靶标

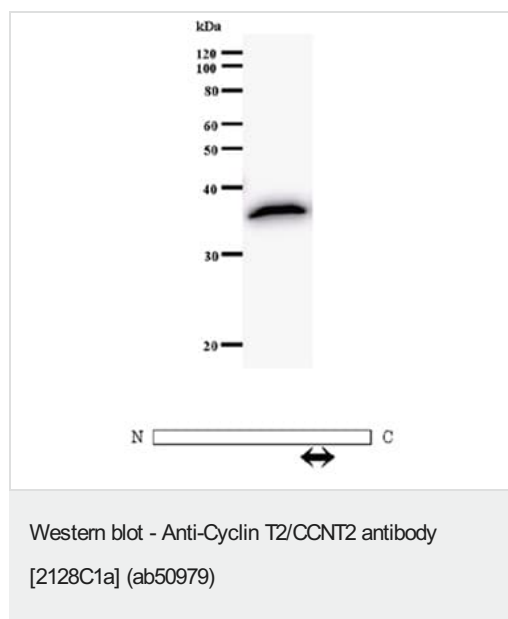
**功能** Regulatory subunit of the cyclin-dependent kinase pair (CDK9/cyclin T) complex, also called positive transcription elongation factor B (P-TEFB), which is proposed to facilitate the transition from abortive to production elongation by phosphorylating the CTD (carboxy-terminal domain) of the large subunit of RNA polymerase II (RNAP II).

**组织特异性** Ubiquitously expressed.

**序列相似性** Belongs to the cyclin family. Cyclin C subfamily.

**细胞定位** Nucleus.

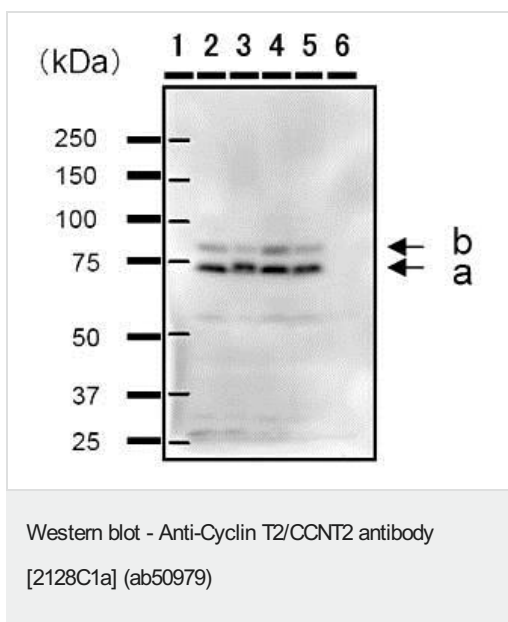
## 图片



Anti-Cyclin T2/CCNT2 antibody [2128C1a] (ab50979) + recombinant protein fragment used as immunogen.

Diagram underneath blot depicts region of Cyclin T2 protein that was employed as immunogen (arrow).

**Predicted band size: 81 kDa**



**All lanes :** Anti-Cyclin T2/CCNT2 antibody [2128C1a] (ab50979)

**Lane 1 :** Molecular Weight Marker

**Lane 2 :** 50µg HeLa Whole cell lysate

**Lane 3 :** 50µg HT-1080 Whole cell lysate

**Lane 4 :** 50 µg HEK293 Whole cell lysate

**Lane 5 :** 50µg A2058 Whole cell lysate

**Lane 6 :** 50µg H1H3T3 Whole cell Lysate

**Secondary**

**Lanes 2-6 :** Mouse IgG Antibody 1/2500

Developed using the ECL technique.

Performed under reducing conditions.

**Predicted band size:** 81 kDa

**Exposure time:** 1 minute

8% SDS-PAGE gel;

**a-** Isoform a = 74kDa (663 a.a.);

**b -** Isoform b = 81kDa (730 a.a.)

**Please note:** All products are "FOR RESEARCH USE ONLY. NOT FOR USE IN DIAGNOSTIC PROCEDURES"

### Our Abpromise to you: Quality guaranteed and expert technical support

- Replacement or refund for products not performing as stated on the datasheet
- Valid for 12 months from date of delivery
- Response to your inquiry within 24 hours
- We provide support in Chinese, English, French, German, Japanese and Spanish
- Extensive multi-media technical resources to help you
- We investigate all quality concerns to ensure our products perform to the highest standards

If the product does not perform as described on this datasheet, we will offer a refund or replacement. For full details of the Abpromise, please visit <https://www.abcam.cn/abpromise> or contact our technical team.

## Terms and conditions

---

- Guarantee only valid for products bought direct from Abcam or one of our authorized distributors