

Anti-Cyclin E1 antibody ab71535

★★★★★ 2 Abreviews 25 References 1 图像

概述

产品名称	Anti-Cyclin E1抗体
描述	兔多克隆抗体to Cyclin E1
宿主	Rabbit
经测试应用	适用于: WB
种属反应性	与反应: Mouse, Rat, Human
免疫原	Recombinant full length protein corresponding to Human Cyclin E1.
常规说明	<p>The Life Science industry has been in the grips of a reproducibility crisis for a number of years. Abcam is leading the way in addressing this with our range of recombinant monoclonal antibodies and knockout edited cell lines for gold-standard validation. Please check that this product meets your needs before purchasing.</p> <p>If you have any questions, special requirements or concerns, please send us an inquiry and/or contact our Support team ahead of purchase. Recommended alternatives for this product can be found below, along with publications, customer reviews and Q&As</p>

性能

形式	Liquid
存放说明	Shipped at 4°C. Store at -20°C. Stable for 12 months at -20°C.
存储溶液	Preservative: 0.03% Sodium azide Constituents: 0.01% BSA, 50% Glycerol (glycerin, glycerine), 0.87% Sodium chloride, HEPES
纯度	IgG fraction
克隆	多克隆
同种型	IgG

应用

The Abpromise guarantee **Abpromise™**承诺保证使用ab71535于以下的经测试应用

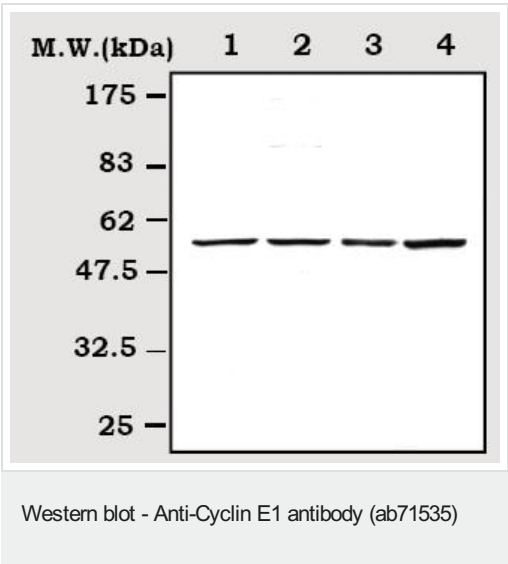
“应用说明”部分 下显示的仅为推荐的起始稀释度;实际最佳的稀释度/浓度应由使用者检定。

应用	Ab评论	说明
WB	★★★★★ (1)	1/2000. Detects a band of approximately 55 kDa (predicted molecular weight: 47 kDa).

靶标

功能	Essential for the control of the cell cycle at the G1/S (start) transition.
组织特异性	Highly expressed in testis and placenta. Low levels in bronchial epithelial cells.
序列相似性	Belongs to the cyclin family. Cyclin E subfamily.
翻译后修饰	Phosphorylation of Thr-395 by GSK3 and of Ser-399 by CDK2 accelerates degradation via the ubiquitin proteasome pathway. Phosphorylated upon DNA damage, probably by ATM or ATR.
细胞定位	Nucleus.

图片



All lanes : Anti-Cyclin E1 antibody (ab71535) at 1/2000 dilution

- Lane 1 : HepG2 cell lysate
- Lane 2 : K562 cell lysate
- Lane 3 : Mouse liver lysate
- Lane 4 : Rat liver lysate

Predicted band size: 47 kDa
Observed band size: 55 kDa

Please note: All products are "FOR RESEARCH USE ONLY. NOT FOR USE IN DIAGNOSTIC PROCEDURES"

Our Abpromise to you: Quality guaranteed and expert technical support

- Replacement or refund for products not performing as stated on the datasheet
- Valid for 12 months from date of delivery
- Response to your inquiry within 24 hours
- We provide support in Chinese, English, French, German, Japanese and Spanish
- Extensive multi-media technical resources to help you
- We investigate all quality concerns to ensure our products perform to the highest standards

If the product does not perform as described on this datasheet, we will offer a refund or replacement. For full details of the Abpromise,

please visit <https://www.abcam.cn/abpromise> or contact our technical team.

Terms and conditions

- Guarantee only valid for products bought direct from Abcam or one of our authorized distributors