


Anti-Cyclin C antibody ab85927

[6 References](#) [3 图像](#)

概述

| | |
|-------|---|
| 产品名称 | Anti-Cyclin C抗体 |
| 描述 | 兔多克隆抗体to Cyclin C |
| 宿主 | Rabbit |
| 经测试应用 | 适用于: WB, IP, IHC-P |
| 种属反应性 | 与反应: Human 预测可用于: Mouse, Rat, Rabbit, Horse, Chicken, Guinea pig, Cow, Dog, Turkey, Pig, Chimpanzee, Rhesus monkey, Gorilla, Orangutan, Platypus  |
| 免疫原 | Synthetic peptide corresponding to Human Cyclin C aa 233-283. Database link: P24863 |
| 阳性对照 | Panc1, 293T, Jurkat, H2009 and HeLa whole cell lysate (ab150035). |
| 常规说明 | <p>The Life Science industry has been in the grips of a reproducibility crisis for a number of years. Abcam is leading the way in addressing this with our range of recombinant monoclonal antibodies and knockout edited cell lines for gold-standard validation. Please check that this product meets your needs before purchasing.</p> <p>If you have any questions, special requirements or concerns, please send us an inquiry and/or contact our Support team ahead of purchase. Recommended alternatives for this product can be found below, along with publications, customer reviews and Q&As</p> |

性能

| | |
|------|---|
| 形式 | Liquid |
| 存放说明 | Shipped at 4°C. Upon delivery aliquot and store at -20°C. Avoid freeze / thaw cycles. |
| 存储溶液 | pH: 7 Preservative: 0.09% Sodium azide Constituent: Tris citrate/phosphate |
| 纯度 | Immunogen affinity purified |
| 克隆 | 多克隆 |
| 同种型 | IgG |

应用

The Abpromise guarantee

Abpromise™ 承诺保证使用 ab85927 于以下的经测试应用

“应用说明”部分 下显示的仅为推荐的起始稀释度;实际最佳的稀释度/浓度应由使用者检定。

| 应用 | Ab评论 | 说明 |
|-------|------|--|
| WB | | 1/2000 - 1/10000. Detects a band of approximately 33 kDa (predicted molecular weight: 33 kDa). |
| IP | | Use at 2-5 µg/mg of lysate. |
| IHC-P | | 1/1000 - 1/5000. Perform heat mediated antigen retrieval before commencing with IHC staining protocol. |

靶标

功能

Component of the Mediator complex, a coactivator involved in regulated gene transcription of nearly all RNA polymerase II-dependent genes. Mediator functions as a bridge to convey information from gene-specific regulatory proteins to the basal RNA polymerase II transcription machinery. Mediator is recruited to promoters by direct interactions with regulatory proteins and serves as a scaffold for the assembly of a functional preinitiation complex with RNA polymerase II and the general transcription factors. Binds to and activates cyclin-dependent kinase CDK8 that phosphorylates the CTD (C-terminal domain) of the large subunit of RNA polymerase II (RNAP II), which may inhibit the formation of a transcription initiation complex.

组织特异性

Highest levels in pancreas. High levels in heart, liver, skeletal muscle and kidney. Low levels in brain.

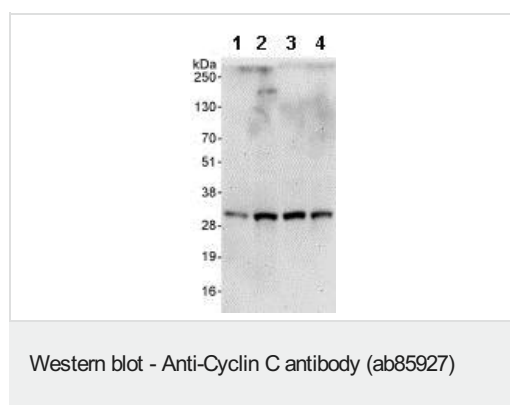
序列相似性

Belongs to the cyclin family. Cyclin C subfamily.
Contains 1 cyclin N-terminal domain.

细胞定位

Nucleus.

图片



All lanes : Anti-Cyclin C antibody (ab85927) at 0.1 µg/ml

Lane 1 : Panc1 whole cell lysate

Lane 2 : 293T whole cell lysate

Lane 3 : Jurkat whole cell lysate

Lane 4 : H2009 whole cell lysate

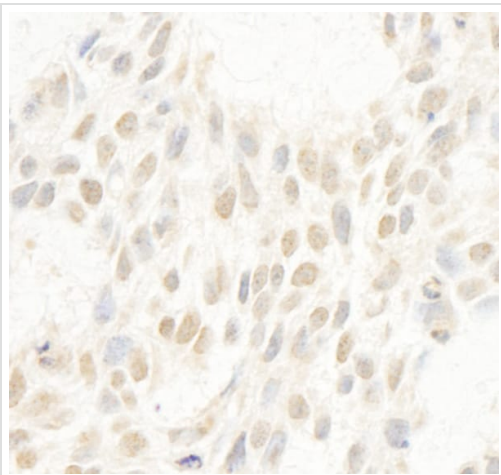
Lysates/proteins at 50 µg per lane.

Developed using the ECL technique.

Predicted band size: 33 kDa

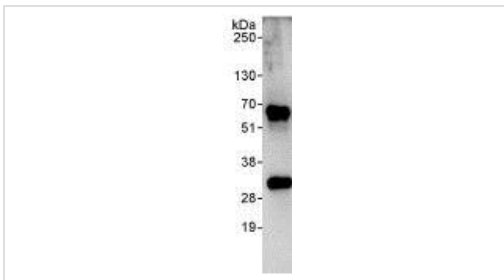
Observed band size: 33 kDa

Exposure time: 3 minutes



Immunohistochemistry (Formalin/PFA-fixed paraffin-embedded sections) analysis of human breast carcinoma tissue labelling Cyclin C with ab85927 at 1/1000 (1 µg/ml). Detection: DAB.

Immunohistochemistry (Formalin/PFA-fixed paraffin-embedded sections) - Anti-Cyclin C antibody (ab85927)



Detection of Human Cyclin C in Immunoprecipitates of Whole cell lysate from HeLa cells (1 mg for IP, 20% of IP loaded) using ab85927 at 3 µg/mg lysate for IP and at 1 µg/ml for subsequent Western blot detection. Detection: Chemiluminescence with an exposure time of 30 seconds.

Immunoprecipitation - Anti-Cyclin C antibody (ab85927)

Please note: All products are "FOR RESEARCH USE ONLY. NOT FOR USE IN DIAGNOSTIC PROCEDURES"

Our Abpromise to you: Quality guaranteed and expert technical support

- Replacement or refund for products not performing as stated on the datasheet
- Valid for 12 months from date of delivery
- Response to your inquiry within 24 hours
- We provide support in Chinese, English, French, German, Japanese and Spanish
- Extensive multi-media technical resources to help you
- We investigate all quality concerns to ensure our products perform to the highest standards

If the product does not perform as described on this datasheet, we will offer a refund or replacement. For full details of the Abpromise, please visit <https://www.abcam.cn/abpromise> or contact our technical team.

Terms and conditions

- Guarantee only valid for products bought direct from Abcam or one of our authorized distributors