

# Anti-Cyclin B1 (phospho S126) antibody ab55184

**8 References**   **2 图像**

### 概述

产品名称	Anti-Cyclin B1 (phospho S126)抗体
描述	兔多克隆抗体to Cyclin B1 (phospho S126)
宿主	Rabbit
经测试应用	适用于: WB, IHC-P
种属反应性	与反应: Mouse, Human
免疫原	Synthetic peptide corresponding to Human Cyclin B1 (phospho S126). Synthetic phosphopeptide derived from human Cyclin B1 around the phosphorylation site of serine 126 (T-A-SP-P-S). Database link: <a href="#">P14635</a>

### 常规说明

The Life Science industry has been in the grips of a reproducibility crisis for a number of years. Abcam is leading the way in addressing this with our range of recombinant monoclonal antibodies and knockout edited cell lines for gold-standard validation. Please check that this product meets your needs before purchasing.

If you have any questions, special requirements or concerns, please send us an inquiry and/or contact our Support team ahead of purchase. Recommended alternatives for this product can be found below, along with publications, customer reviews and Q&As

### 性能

形式	Liquid
存放说明	Shipped at 4°C. Store at -20°C. Stable for 12 months at -20°C.
存储溶液	pH: 7.40 Preservative: 0.02% Sodium azide Constituents: 50% Glycerol (glycerin, glycerine), 0.87% Sodium chloride, PBS
纯度	Immunogen affinity purified
纯化说明	The antibody against non-phosphopeptide was removed by chromatography using non-phosphopeptide corresponding to the phosphorylation site.
克隆	多克隆
同种型	IgG

### 应用

## The Abpromise guarantee

**Abpromise™** 承诺保证使用ab55184于以下的经测试应用

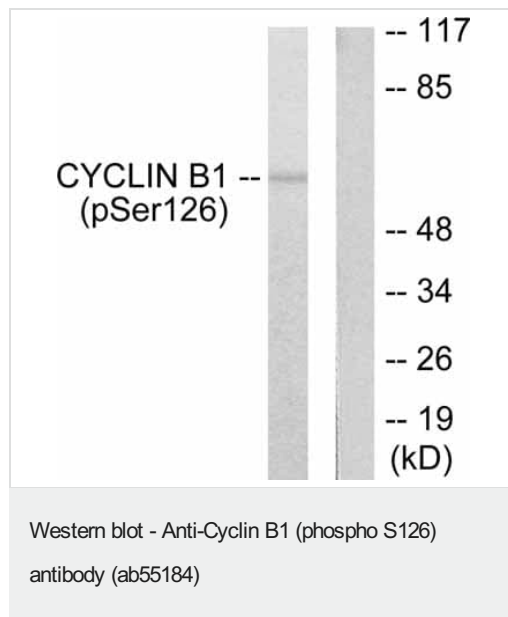
“应用说明”部分 下显示的仅为推荐的起始稀释度;实际最佳的稀释度/浓度应由使用者检定。

应用	Ab评论	说明
WB		1/500 - 1/1000. Detects a band of approximately 65 kDa (predicted molecular weight: 48 kDa).
IHC-P		1/50 - 1/100.

## 靶标

功能	Essential for the control of the cell cycle at the G2/M (mitosis) transition.
序列相似性	Belongs to the cyclin family. Cyclin AB subfamily.
发展阶段	Accumulates steadily during G2 and is abruptly destroyed at mitosis.
翻译后修饰	Ubiquitinated by the SCF(NIPA) complex during interphase, leading to its destruction. Not ubiquitinated during G2/M phases.
细胞定位	Cytoplasm. Nucleus. Cytoplasm > cytoskeleton > centrosome.

## 图片



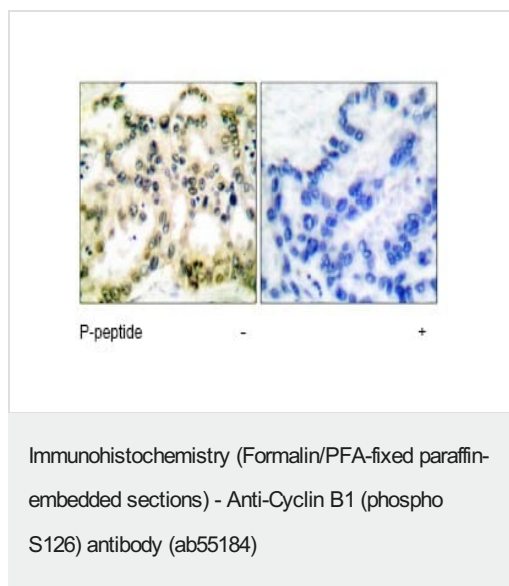
**All lanes :** Anti-Cyclin B1 (phospho S126) antibody (ab55184) at 1/500 dilution

**Lane 1 :** extracts from NIH/3T3 cells treated with EGF (200ng/ml, 15mins).

**Lane 2 :** extracts from NIH/3T3 cells treated with EGF (200ng/ml, 15mins); **ab36621** pre-incubated with the immunising phosphopeptide.

**Predicted band size:** 48 kDa

**Observed band size:** 65 kDa



Immunohistochemical analysis of Cyclin B1 (phospho S126) expression in paraffin embedded human lung carcinoma tissue using ab55184 at 1/50 dilution (left). Right hand panel represents a negative control where ab55184 was pre-incubated with the immunising (blocking) phosphopeptide.

**Please note:** All products are "FOR RESEARCH USE ONLY. NOT FOR USE IN DIAGNOSTIC PROCEDURES"

### Our Abpromise to you: Quality guaranteed and expert technical support

- Replacement or refund for products not performing as stated on the datasheet
- Valid for 12 months from date of delivery
- Response to your inquiry within 24 hours
- We provide support in Chinese, English, French, German, Japanese and Spanish
- Extensive multi-media technical resources to help you
- We investigate all quality concerns to ensure our products perform to the highest standards

If the product does not perform as described on this datasheet, we will offer a refund or replacement. For full details of the Abpromise, please visit <https://www.abcam.cn/abpromise> or contact our technical team.

### Terms and conditions

- Guarantee only valid for products bought direct from Abcam or one of our authorized distributors