

Anti-Cyclin B1 antibody [V92.1] ab18221

4 References [1 图像](#)

概述

产品名称	Anti-Cyclin B1抗体[V92.1]
描述	小鼠单克隆抗体[V92.1] to Cyclin B1
宿主	Mouse
特异性	V92.1 can immunoprecipitate active CDK1/cyclin B1 complexes.
经测试应用	适用于: ICC/IF
种属反应性	与反应: Human
免疫原	Full length protein (Hamster).
常规说明	<p>The Life Science industry has been in the grips of a reproducibility crisis for a number of years. Abcam is leading the way in addressing this with our range of recombinant monoclonal antibodies and knockout edited cell lines for gold-standard validation. Please check that this product meets your needs before purchasing.</p> <p>If you have any questions, special requirements or concerns, please send us an inquiry and/or contact our Support team ahead of purchase. Recommended alternatives for this product can be found below, along with publications, customer reviews and Q&As</p>

性能

形式	Liquid
存放说明	Shipped at 4°C. Store at +4°C short term (1-2 weeks). Upon delivery aliquot. Store at -20°C or -80°C. Avoid freeze / thaw cycle.
存储溶液	Preservative: 0.02% Sodium azide Constituent: 99.98% PBS
纯度	Protein A/G purified
克隆	单克隆
克隆编号	V92.1
同种型	IgG1

应用

The Abpromise guarantee

Abpromise™ 承诺保证使用ab18221于以下的经测试应用

“应用说明”部分 下显示的仅为推荐的起始稀释度;实际最佳的稀释度/浓度应由使用者检定。

应用	Ab评论	说明
ICC/IF		

应用说明

ICC/IF: Use at a concentration of 1 µg/ml.

IP: Use at an assay dependent dilution.

Not tested in other applications.

Optimal dilutions/concentrations should be determined by the end user.

靶标

功能

Essential for the control of the cell cycle at the G2/M (mitosis) transition.

序列相似性

Belongs to the cyclin family. Cyclin AB subfamily.

发展阶段

Accumulates steadily during G2 and is abruptly destroyed at mitosis.

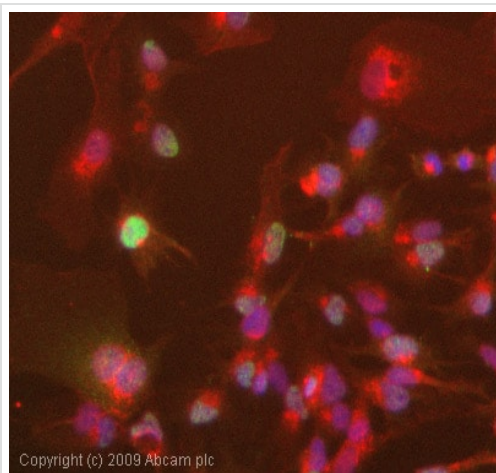
翻译后修饰

Ubiquitinated by the SCF(NIP) complex during interphase, leading to its destruction. Not ubiquitinated during G2/M phases.

细胞定位

Cytoplasm. Nucleus. Cytoplasm > cytoskeleton > centrosome.

图片



Copyright (c) 2009 Abcam plc

Immunocytochemistry/ Immunofluorescence - Anti-Cyclin B1 antibody [V92.1] (ab18221)

ICC/IF image of ab18221 stained HepG2 cells. The cells were 4% formaldehyde fixed (10 min) and then incubated in 1%BSA / 10% normal goat serum / 0.3M glycine in 0.1% PBS-Tween for 1h to permeabilise the cells and block non-specific protein-protein interactions. The cells were then incubated with the antibody (ab18221, 1µg/ml) overnight at +4°C. The secondary antibody (green) was Alexa Fluor® 488 goat anti-mouse IgG (H+L) used at a 1/1000 dilution for 1h. Alexa Fluor® 594 WGA was used to label plasma membranes (red) at a 1/200 dilution for 1h. DAPI was used to stain the cell nuclei (blue) at a concentration of 1.43µM.

Please note: All products are "FOR RESEARCH USE ONLY. NOT FOR USE IN DIAGNOSTIC PROCEDURES"

Our Abpromise to you: Quality guaranteed and expert technical support

- Replacement or refund for products not performing as stated on the datasheet
- Valid for 12 months from date of delivery

- Response to your inquiry within 24 hours
- We provide support in Chinese, English, French, German, Japanese and Spanish
- Extensive multi-media technical resources to help you
- We investigate all quality concerns to ensure our products perform to the highest standards

If the product does not perform as described on this datasheet, we will offer a refund or replacement. For full details of the Abpromise, please visit <https://www.abcam.cn/abpromise> or contact our technical team.

Terms and conditions

- Guarantee only valid for products bought direct from Abcam or one of our authorized distributors