

### Anti-Cyclin A2 antibody [E67.1] ab39

★★★★☆ [4 Abreviews](#) [7 References](#) [1 图像](#)

#### 概述

|       |  |
|-------|--|
| 产品名称  | Anti-Cyclin A2抗体[E67.1]  |
| 描述    | 小鼠单克隆抗体[E67.1] to Cyclin A2  |
| 宿主    | Mouse  |
| 经测试应用 | 适用于: IP  |
| 种属反应性 | 与反应: Human   |
| 免疫原   | Full length protein corresponding to Cow Cyclin A2.  |
| 表位    | The epitope for this antibody was mapped by phage selection - selected phage contained the sequence LDYP. This would place the epitope within the region spanning amino acids 144 - 148 of human Cyclin A2. Cyclin As that contain the epitope Cow A2 Human A2 Hamster A2 Mouse A2 Cyclin As that do not contain the epitope Chicken A2 Frog A2 Human A1 Mouse A1 Frog A1  |
| 常规说明  | <p>Few other monoclonal antibodies other than E67.1 are able to immunoprecipitate active CDK/Cyclin A H1 kinase from such a wide range of species.</p> <p>The Life Science industry has been in the grips of a reproducibility crisis for a number of years. Abcam is leading the way in addressing this with our range of recombinant monoclonal antibodies and knockout edited cell lines for gold-standard validation. Please check that this product meets your needs before purchasing.</p> <p>If you have any questions, special requirements or concerns, please send us an inquiry and/or contact our Support team ahead of purchase. Recommended alternatives for this product can be found below, along with publications, customer reviews and Q&amp;As</p> |

#### 性能

|      |  |
|------|--|
| 形式   | Liquid   |
| 存放说明 | Shipped at 4°C. Store at +4°C short term (1-2 weeks). Upon delivery aliquot. Store at -20°C or -80°C. Avoid freeze / thaw cycle. |
| 存储溶液 | Preservative: 0.02% Sodium azide<br>Constituent: 99.98% PBS  |
| 纯度   | Protein A purified   |
| 克隆   | 单克隆  |
| 克隆编号 | E67.1  |
| 骨髓瘤  | unknown  |

|      |         |
|------|---------|
| 同种型  | IgG2a   |
| 轻链类型 | unknown |

应用

**The Abpromise guarantee**      **Abpromise™**承诺保证使用ab39于以下的经测试应用

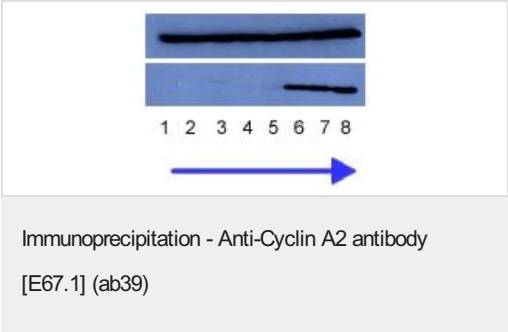
“应用说明”部分 下显示的仅为推荐的起始稀释度;实际最佳的稀释度/浓度应由使用者检定。

| 应用 | Ab评论      | 说明                                |
|----|-----------|-----------------------------------|
| IP | ★★★★★ (1) | Use a concentration of 2.5 µg/ml. |

靶标

|       |   |
|-------|---|
| 功能    | Essential for the control of the cell cycle at the G1/S (start) and the G2/M (mitosis) transitions. |
| 序列相似性 | Belongs to the cyclin family. Cyclin AB subfamily.  |
| 发展阶段  | Accumulates steadily during G2 and is abruptly destroyed at mitosis.                                |
| 细胞定位  | Nucleus. Cytoplasm. Cytoplasmic when associated with SCAPER.  |

图片



Cells at stages in the cell cycle from quiescence to mitosis (1-8) were loaded onto SDSPAGE and blotted with anti CDK2 antibody. Note all cells have similar amounts of CDK2. In the lower panel these same extracts were first immunoprecipitated with anti Cyclin A monoclonal E67. In these lanes, only the CDK2 that is complexed to Cyclin A is immunoblotted. Note only the CDK2 in the later stages of the cell cycle is immunoprecipitated, which is when Cyclin A is made, This clearly shows that this antibody is able to immunoprecipitate cyclin A when it is bound to CDK2.

**Please note:** All products are "FOR RESEARCH USE ONLY. NOT FOR USE IN DIAGNOSTIC PROCEDURES"

**Our Abpromise to you: Quality guaranteed and expert technical support**

- Replacement or refund for products not performing as stated on the datasheet
- Valid for 12 months from date of delivery
- Response to your inquiry within 24 hours
- We provide support in Chinese, English, French, German, Japanese and Spanish
- Extensive multi-media technical resources to help you
- We investigate all quality concerns to ensure our products perform to the highest standards

If the product does not perform as described on this datasheet, we will offer a refund or replacement. For full details of the Abpromise, please visit <https://www.abcam.cn/abpromise> or contact our technical team.

#### **Terms and conditions**

---

- Guarantee only valid for products bought direct from Abcam or one of our authorized distributors