


Anti-Cyclin A2 antibody [E23.1] ab38

★★★★★ [10 Abreviews](#) [57 References](#) [4 图像](#)

概述

| | |
|-------|---|
| 产品名称 | Anti-Cyclin A2抗体[E23.1] |
| 描述 | 小鼠单克隆抗体[E23.1] to Cyclin A2 |
| 宿主 | Mouse |
| 经测试应用 | 适用于: IHC-P, WB |
| 种属反应性 | 与反应: Mouse, Rat, Human 预测可用于: Chicken, Cow  |
| 免疫原 | Recombinant full length protein. This information is proprietary to Abcam and/or its suppliers. |
| 阳性对照 | WB: HEK293; U20S; PC12; NIH3T3. IHC-P: Human breast cancer tissue. |
| 常规说明 | <p>This antibody clone is manufactured by Abcam. If you require a custom buffer formulation or conjugation for your experiments, please contact orders@abcam.com.</p> <p>The Life Science industry has been in the grips of a reproducibility crisis for a number of years. Abcam is leading the way in addressing this with our range of recombinant monoclonal antibodies and knockout edited cell lines for gold-standard validation. Please check that this product meets your needs before purchasing.</p> <p>If you have any questions, special requirements or concerns, please send us an inquiry and/or contact our Support team ahead of purchase. Recommended alternatives for this product can be found below, along with publications, customer reviews and Q&As</p> |

性能

| | |
|------|--|
| 形式 | Liquid |
| 存放说明 | Shipped at 4°C. Store at +4°C short term (1-2 weeks). Upon delivery aliquot. Store at -20°C or -80°C. Avoid freeze / thaw cycle. |
| 存储溶液 | pH: 7.40 Preservative: 0.02% Sodium azide Constituent: PBS |
| 纯度 | Protein G purified |
| 克隆 | 单克隆 |
| 克隆编号 | E23.1 |
| 骨髓瘤 | Sp2 |

| | |
|------|-------|
| 同种型 | IgG2a |
| 轻链类型 | kappa |

应用

The Abpromise guarantee **Abpromise™**承诺保证使用ab38于以下的经测试应用

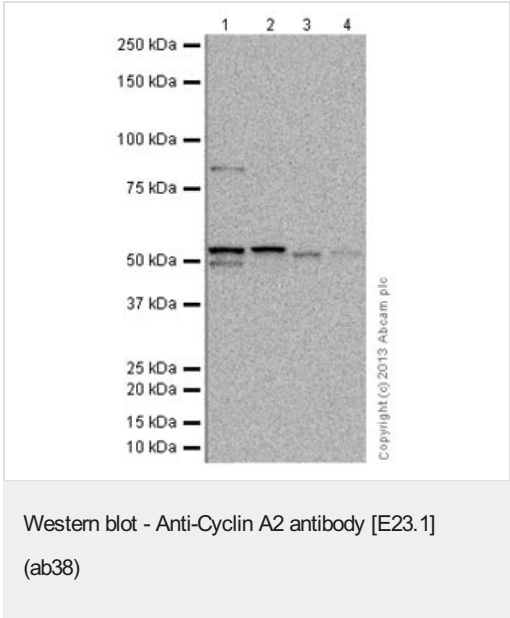
“应用说明”部分 下显示的仅为推荐的起始稀释度;实际最佳的稀释度/浓度应由使用者检定。

| 应用 | Ab评论 | 说明 |
|-------|-----------|--|
| IHC-P | ★★★★★ (1) | Use a concentration of 5 µg/ml. |
| WB | ★★★★★ (3) | Use a concentration of 5 µg/ml. Detects a band of approximately 50 kDa (predicted molecular weight: 60 kDa). |

靶标

| | |
|-------|---|
| 功能 | Essential for the control of the cell cycle at the G1/S (start) and the G2/M (mitosis) transitions. |
| 序列相似性 | Belongs to the cyclin family. Cyclin AB subfamily. |
| 发展阶段 | Accumulates steadily during G2 and is abruptly destroyed at mitosis. |
| 细胞定位 | Nucleus. Cytoplasm. Cytoplasmic when associated with SCAPER. |

图片



All lanes : Anti-Cyclin A2 antibody [E23.1] (ab38) at 5 µg/ml

Lane 1 : HEK293 (Human embryonic kidney cell line) Whole Cell Lysate

Lane 2 : U2OS (Human osteosarcoma cell line) Whole Cell Lysate

Lane 3 : PC12 (Rat adrenal pheochromocytoma cell line) Whole Cell Lysate

Lane 4 : NIH 3T3 (Mouse embryonic fibroblast cell line) Whole Cell Lysate

Lysates/proteins at 20 µg per lane.

Secondary

All lanes : Goat Anti-Mouse IgG H&L (HRP) preadsorbed (**ab97040**) at 1/10000 dilution

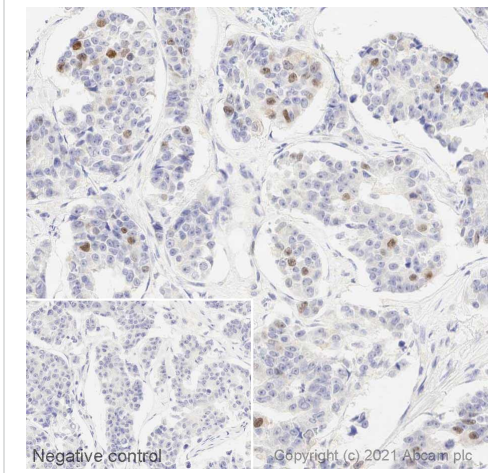
Developed using the ECL technique.

Performed under reducing conditions.

Predicted band size: 60 kDa

Observed band size: 50 kDa

Exposure time: 20 minutes

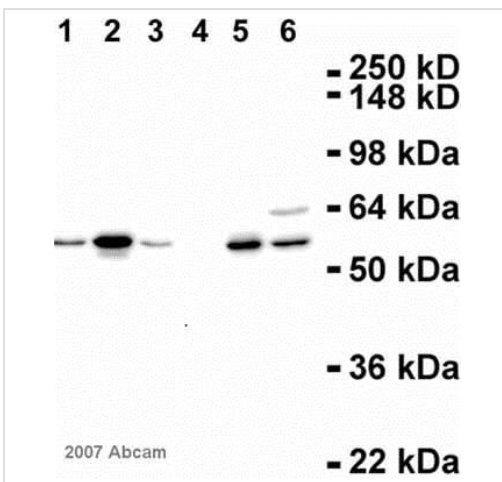


Immunohistochemistry (Formalin/PFA-fixed paraffin-embedded sections) - Anti-Cyclin A2 antibody [E23.1] (ab38)

Immunohistochemical analysis of Cyclin A2 staining in Human breast cancer formalin fixed paraffin embedded tissue section*, performed on a Leica Bond™ system using the standard protocol F. The section was pre-treated using heat mediated antigen retrieval (EDTA based pH 9.0 solution, epitope retrieval solution 2) for 20 mins. The section was then incubated with ab38 (5 µg/ml) for 15 mins at room temperature and detected using an HRP conjugated compact polymer system. DAB was used as the chromogen. The section was then counterstained with haematoxylin and mounted with DPX.

For other IHC staining systems (automated and non-automated) customers should optimize variable parameters such as antigen retrieval conditions, primary antibody concentration and antibody incubation times.

**Tissue obtained from the Human Research Tissue Bank, supported by the NIHR Cambridge Biomedical Research Centre*



Western blot - Anti-Cyclin A2 antibody [E23.1] (ab38)

This image is courtesy of an anonymous Abreview

All lanes : Anti-Cyclin A2 antibody [E23.1] (ab38) at 2 µg/ml

Lane 1 : U2OS (Hu) whole cell lysate

Lane 2 : 293T (Hu) whole cell lysate

Lane 3 : Cos-7 (AGMk) whole cell lysate

Lane 4 : CHO (Hm) whole cell lysate

Lane 5 : PC12 (Rat) whole cell lysate

Lane 6 : 3T3 (Ms) whole cell lysate

Lysates/proteins at 30 µg per lane.

Secondary

All lanes : HRP conjugated goat anti-mouse at 1/5000 dilution

Performed under reducing conditions.

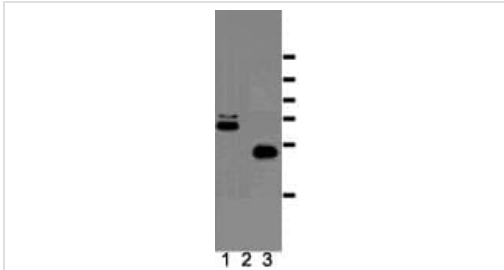
Predicted band size: 60 kDa

Observed band size: 58 kDa

Additional bands at: 64 kDa. We are unsure as to the identity of these extra bands.

Exposure time: 6 minutes

The membrane was blocked with 5% milk for 1 hour at 21°C prior to incubation with the primary antibody for 12 hours at 4°C.



Western blot - Anti-Cyclin A2 antibody [E23.1]
(ab38)

This image is courtesy of Julian Gannon, CRUK.

Western Blot of Swiss 3T3 cells showing presence of cyclin A in rapidly dividing cells (1) but absent in quiescent cells (2).

Recombinant cyclin A (3). Molecular weight markers 114, 98, 68, 57, 43 and 32 kD. Western Blot of Swiss 3T3 cells showing presence of cyclin A in rapidly dividing cells (1) but absent in quiescent cells (2). Recombinant cyclin A (3). Molecular weight markers 114, 98, 68, 57, 43 and 32 kD.

Please note: All products are "FOR RESEARCH USE ONLY. NOT FOR USE IN DIAGNOSTIC PROCEDURES"

Our Abpromise to you: Quality guaranteed and expert technical support

- Replacement or refund for products not performing as stated on the datasheet
- Valid for 12 months from date of delivery
- Response to your inquiry within 24 hours
- We provide support in Chinese, English, French, German, Japanese and Spanish
- Extensive multi-media technical resources to help you
- We investigate all quality concerns to ensure our products perform to the highest standards

If the product does not perform as described on this datasheet, we will offer a refund or replacement. For full details of the Abpromise, please visit <https://www.abcam.cn/abpromise> or contact our technical team.

Terms and conditions

- Guarantee only valid for products bought direct from Abcam or one of our authorized distributors