


### Anti-Cyclin A2 antibody - C-terminal ab227277

#### 3 图像

#### 概述

产品名称	Anti-Cyclin A2抗体- C-terminal
描述	兔多克隆抗体to Cyclin A2 - C-terminal
宿主	Rabbit
经测试应用	适用于: WB, IHC-P, ICC/IF
种属反应性	与反应: Mouse, Human 预测可用于: Rat, Rabbit, Cow, Pig, Rhesus monkey 
免疫原	Recombinant fragment within Human Cyclin A2 (C terminal). The exact sequence is proprietary. Database link: <a href="#">P20248</a>
阳性对照	WB: Mouse brain tissue lysate. IHC-P: Human lung adenocarcinoma tissue. ICC/IF: HeLa cells.
常规说明	<p>The Life Science industry has been in the grips of a reproducibility crisis for a number of years. Abcam is leading the way in addressing this with our range of recombinant monoclonal antibodies and knockout edited cell lines for gold-standard validation. Please check that this product meets your needs before purchasing.</p> <p>If you have any questions, special requirements or concerns, please send us an inquiry and/or contact our Support team ahead of purchase. Recommended alternatives for this product can be found below, along with publications, customer reviews and Q&amp;As</p>

#### 性能

形式	Liquid
存放说明	Shipped at 4°C. Store at +4°C short term (1-2 weeks). Upon delivery aliquot. Store at -20°C long term. Avoid freeze / thaw cycle.
存储溶液	pH: 7.00 Preservative: 0.01% Thimerosal (merthiolate) Constituents: 1.21% Tris, 0.75% Glycine, 10% Glycerol (glycerin, glycerine)
纯度	Immunogen affinity purified
克隆	多克隆
同种型	IgG

#### 应用

The Abpromise guarantee

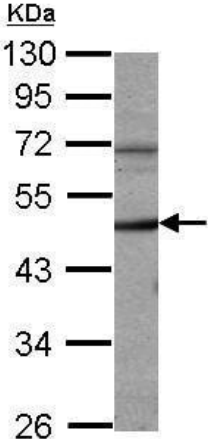
Abpromise™承诺保证使用ab227277于以下的经测试应用

“应用说明”部分 下显示的仅为推荐的起始稀释度;实际最佳的稀释度/浓度应由使用者检定。

应用	Ab评论	说明
WB		1/500 - 1/3000. Predicted molecular weight: 49 kDa.
IHC-P		1/100 - 1/1000.
ICC/IF		1/100 - 1/1000.

靶标	
功能	Essential for the control of the cell cycle at the G1/S (start) and the G2/M (mitosis) transitions.
序列相似性	Belongs to the cyclin family. Cyclin AB subfamily.
发展阶段	Accumulates steadily during G2 and is abruptly destroyed at mitosis.
细胞定位	Nucleus. Cytoplasm. Cytoplasmic when associated with SCAPER.

图片



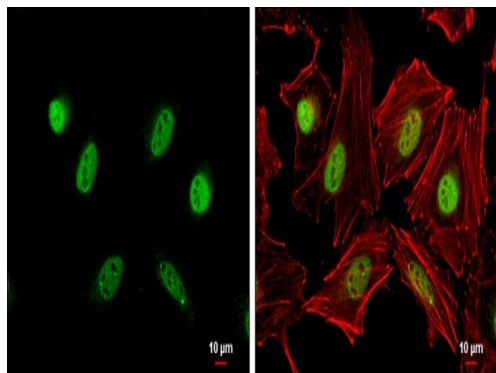
Western blot - Anti-Cyclin A2 antibody - C-terminal (ab227277)

Anti-Cyclin A2 antibody - C-terminal (ab227277) at 1/1000 dilution  
+ Mouse brain tissue lysate at 50 µg

Developed using the ECL technique.

**Predicted band size:** 49 kDa

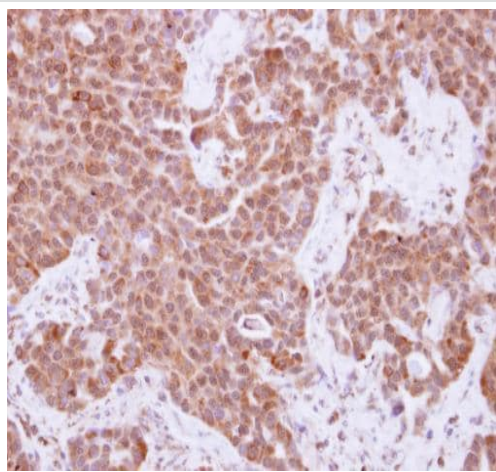
10% SDS-PAGE



Immunocytochemistry/ Immunofluorescence - Anti-Cyclin A2 antibody - C-terminal (ab227277)

HeLa (human epithelial cell line from cervix adenocarcinoma) cells stained for Cyclin A2 (green) using ab227277 at 1/500 dilution in ICC/IF. Cells were fixed in 4% paraformaldehyde at RT for 15 minutes.

Red: Phalloidin cytoskeletal marker.



Immunohistochemistry (Formalin/PFA-fixed paraffin-embedded sections) - Anti-Cyclin A2 antibody - C-terminal (ab227277)

Paraffin-embedded human lung adenocarcinoma tissue stained for Cyclin A2 with ab227277 at 1/250 dilution in immunohistochemical analysis.

**Please note:** All products are "FOR RESEARCH USE ONLY. NOT FOR USE IN DIAGNOSTIC PROCEDURES"

### Our Abpromise to you: Quality guaranteed and expert technical support

- Replacement or refund for products not performing as stated on the datasheet
- Valid for 12 months from date of delivery
- Response to your inquiry within 24 hours

- We provide support in Chinese, English, French, German, Japanese and Spanish
- Extensive multi-media technical resources to help you
- We investigate all quality concerns to ensure our products perform to the highest standards

If the product does not perform as described on this datasheet, we will offer a refund or replacement. For full details of the Abpromise, please visit <https://www.abcam.cn/abpromise> or contact our technical team.

#### **Terms and conditions**

---

- Guarantee only valid for products bought direct from Abcam or one of our authorized distributors