



Anti-CXCL2 antibody ab9841

2 图像

概述

| | |
|-------|---|
| 产品名称 | Anti-CXCL2抗体 |
| 描述 | 兔多克隆抗体to CXCL2 |
| 宿主 | Rabbit |
| 经测试应用 | 适用于: WB, Sandwich ELISA |
| 种属反应性 | 与反应: Recombinant fragment |
| 免疫原 | Recombinant full length protein corresponding to Human CXCL2 aa 1-150. Database link: P19875 |
| | <div>  Run BLAST with </div> <div>  Run BLAST with </div> |
| 阳性对照 | WB: Recombinant human CXCL2 protein (ab9842). |
| 常规说明 | <p>The Life Science industry has been in the grips of a reproducibility crisis for a number of years. Abcam is leading the way in addressing this with our range of recombinant monoclonal antibodies and knockout edited cell lines for gold-standard validation. Please check that this product meets your needs before purchasing.</p> <p>If you have any questions, special requirements or concerns, please send us an inquiry and/or contact our Support team ahead of purchase. Recommended alternatives for this product can be found below, along with publications, customer reviews and Q&As</p> |

性能

| | |
|------|--|
| 形式 | Lyophilized:Reconstitute with 200µl of sterile water. |
| 存放说明 | Shipped at 4°C. Store at +4°C short term (1-2 weeks). Upon delivery aliquot. Store at -20°C long term. |
| 存储溶液 | No preservative, sterile filtered |
| 纯度 | Immunogen affinity purified |
| 克隆 | 多克隆 |
| 同种型 | IgG |
| 轻链类型 | unknown |

应用

The Abpromise guarantee **Abpromise™**承诺保证使用ab9841于以下的经测试应用

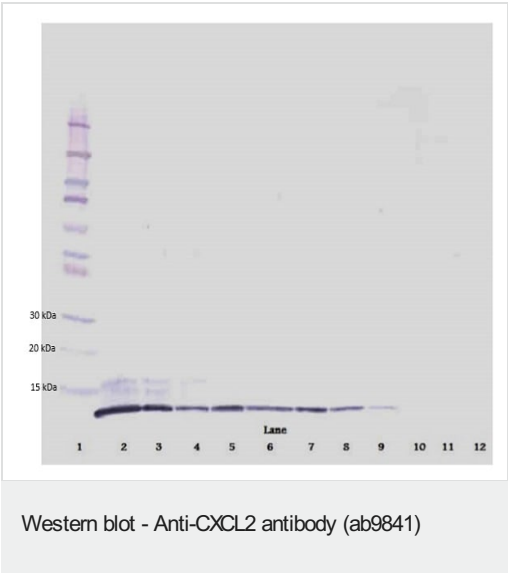
“应用说明”部分 下显示的仅为推荐的起始稀释度;实际最佳的稀释度/浓度应由使用者检定。

| 应用 | Ab评论 | 说明 |
|----------------|------|--|
| WB | | Use a concentration of 0.1 - 0.2 µg/ml. The detection limit for recombinant human CXCL2 is 1.5 - 3.0 ng/lane, under either reducing or non-reducing conditions. |
| Sandwich ELISA | | Use a concentration of 0.5 - 2 µg/ml. Use 100 µl/well antibody solution. Detects of 0.2 - 0.4 ng/well of recombinant human CXCL2. |

靶标

| | |
|-------|--|
| 功能 | Produced by activated monocytes and neutrophils and expressed at sites of inflammation. Hematopoietic chemokine, which, in vitro, suppresses hematopoietic progenitor cell proliferation. GRO-beta(5-73) shows a highly enhanced hematopoietic activity. |
| 序列相似性 | Belongs to the intercrine alpha (chemokine CxC) family. |
| 翻译后修饰 | The N-terminal processed form GRO-beta(5-73) is produced by proteolytic cleavage after secretion from bone marrow stromal cells. |
| 细胞定位 | Secreted. |

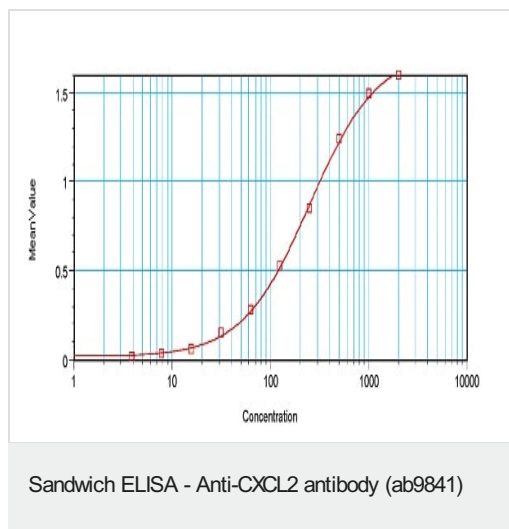
图片



To detect human CXCL2 by Western Blot analysis ab9841 can be used at a concentration of 0.1-0.2 µg/ml. When used in conjunction with compatible secondary reagents, the detection limit for recombinant human CXCL2 is 1.5-3.0 ng/lane, under either reducing or non-reducing conditions.

Image shown is reducing conditions; Human recombinant CXCL2 protein at 250 - 0.24 ng/ml.

Lane 1 is MW marker, lanes 2-12 human recombinant CXCL2 protein.



To detect human CXCL2 by sandwich ELISA (using 100 μ l/well antibody solution) a concentration of 0.5 - 2.0 μ g/ml of ab9841 is required. This antigen affinity purified antibody, in conjunction with anti-CXCL2 (Biotin) (**ab245843**) as a detection antibody, allows the detection of at least 0.2 - 0.4 ng/well of recombinant human CXCL2 .

Please note: All products are "FOR RESEARCH USE ONLY. NOT FOR USE IN DIAGNOSTIC PROCEDURES"

Our Abpromise to you: Quality guaranteed and expert technical support

- Replacement or refund for products not performing as stated on the datasheet
- Valid for 12 months from date of delivery
- Response to your inquiry within 24 hours
- We provide support in Chinese, English, French, German, Japanese and Spanish
- Extensive multi-media technical resources to help you
- We investigate all quality concerns to ensure our products perform to the highest standards

If the product does not perform as described on this datasheet, we will offer a refund or replacement. For full details of the Abpromise, please visit <https://www.abcam.cn/abpromise> or contact our technical team.

Terms and conditions

- Guarantee only valid for products bought direct from Abcam or one of our authorized distributors