


# Anti-Cullin 7/CUL-7 antibody ab115304

### 1 图像

#### 概述

<b>产品名称</b>	Anti-Cullin 7/CUL-7抗体
<b>描述</b>	兔多克隆抗体to Cullin 7/CUL-7
<b>宿主</b>	Rabbit
<b>经测试应用</b>	<b>适用于:</b> IHC-P
<b>种属反应性</b>	<b>与反应:</b> Human <b>预测可用于:</b> Rat, Horse, Cow, Pig, Orangutan 
<b>免疫原</b>	Synthetic peptide corresponding to Human Cullin 7/CUL-7 aa 1650-1750 (C terminal) conjugated to keyhole limpet haemocyanin. <a href="#">Run BLAST with Expasy</a> <a href="#">Run BLAST with NCBI</a>
<b>阳性对照</b>	Human Brain, Cortex tissue
<b>常规说明</b>	<p>The Life Science industry has been in the grips of a reproducibility crisis for a number of years. Abcam is leading the way in addressing this with our range of recombinant monoclonal antibodies and knockout edited cell lines for gold-standard validation. Please check that this product meets your needs before purchasing.</p> <p>If you have any questions, special requirements or concerns, please send us an inquiry and/or contact our Support team ahead of purchase. Recommended alternatives for this product can be found below, along with publications, customer reviews and Q&amp;As</p>

#### 性能

<b>形式</b>	Liquid
<b>存放说明</b>	Shipped at 4°C. Store at +4°C short term (1-2 weeks). Upon delivery aliquot. Store at -20°C long term.
<b>存储溶液</b>	pH: 6 Preservative: 0.01% Sodium azide Constituent: 99% Whole serum
<b>纯度</b>	Whole antiserum
<b>纯化说明</b>	Delipidation and defibrination
<b>克隆</b>	多克隆
<b>同种型</b>	IgG

## 应用

### The Abpromise guarantee

**Abpromise™** 承诺保证使用 ab115304 于以下的经测试应用

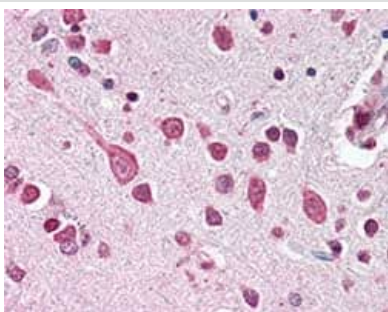
“应用说明”部分 下显示的仅为推荐的起始稀释度;实际最佳的稀释度/浓度应由使用者检定。

应用	Ab评论	说明
IHC-P		1/500. Perform heat mediated antigen retrieval with citrate buffer pH 6 before commencing with IHC staining protocol.

## 靶标

<b>功能</b>	Component of a probable SCF-like E3 ubiquitin-protein ligase complex, which mediates the ubiquitination and subsequent proteasomal degradation of target proteins. Probably plays a role in the degradation of proteins involved in endothelial proliferation and/or differentiation (By similarity). Seems not to promote polyubiquitination and proteasomal degradation of TP53. In vitro, complexes of CUL7 with either CUL9 or FBXW8 or TP53 contain E3 ubiquitin-protein ligase activity.
<b>组织特异性</b>	Highly expressed in fetal kidney and adult skeletal muscle. Also abundant in fetal brain, as well as in adult pancreas, kidney, placenta and heart. Detected in trophoblasts, lymphoblasts, osteoblasts, chondrocytes and skin fibroblasts.
<b>通路</b>	Protein modification; protein ubiquitination.
<b>疾病相关</b>	Defects in CUL7 are the cause of 3M syndrome type 1 (3M1) [MIM:273750]. An autosomal recessive disorder characterized by severe pre- and postnatal growth retardation, facial dysmorphism, large head circumference, and normal intelligence and endocrine function. Skeletal changes include long slender tubular bones and tall vertebral bodies.
<b>序列相似性</b>	Belongs to the cullin family. Contains 1 DOC domain.
<b>细胞定位</b>	Cytoplasm.

## 图片



ab115304, at 1/500 dilution, staining Cullin 7/CUL-7 in formalin-fixed, paraffin-embedded Human Brain, Cortex tissue by Immunohistochemistry, using a biotinylated goat anti-rabbit IgG secondary antibody, alkaline phosphatase-streptavidin and chromogen.

Immunohistochemistry (Formalin/PFA-fixed paraffin-embedded sections) - Anti-Cullin 7/CUL-7 antibody (ab115304)

## **Our Abpromise to you: Quality guaranteed and expert technical support**

---

- Replacement or refund for products not performing as stated on the datasheet
- Valid for 12 months from date of delivery
- Response to your inquiry within 24 hours
  
- We provide support in Chinese, English, French, German, Japanese and Spanish
- Extensive multi-media technical resources to help you
- We investigate all quality concerns to ensure our products perform to the highest standards

If the product does not perform as described on this datasheet, we will offer a refund or replacement. For full details of the Abpromise, please visit <https://www.abcam.cn/abpromise> or contact our technical team.

## **Terms and conditions**

---

- Guarantee only valid for products bought direct from Abcam or one of our authorized distributors