

### Anti-Cullin 4A/CUL-4A antibody [EPR3198] ab92554

**重组** RabMAb

**1** Abreviews **17** References **8** 图像

#### 概述

产品名称	Anti-Cullin 4A/CUL-4A抗体[EPR3198]
描述	兔单克隆抗体[EPR3198] to Cullin 4A/CUL-4A
宿主	Rabbit
特异性	The immunogen used for this product shares 93% homology with Cul4B. Cross-reactivity with Cul4B has been observed using overexpression vectors but not on endogenous samples.
经测试应用	<b>适用于:</b> WB, IP, IHC-P <b>不适用于:</b> Flow Cyt or ICC/IF
种属反应性	<b>与反应:</b> Human
免疫原	Synthetic peptide within Human Cullin 4A/CUL-4A aa 700-800 (C terminal). The exact sequence is proprietary. Database link: <a href="#">Q13619</a>
阳性对照	WB: HeLa, A375, 293T, HEK-293 transfected with human full length Cul4A and Cul4B expression vectors whole cell lysates. IHC-P: Human breast carcinoma, Hepatocellular carcinoma, Colonic adenocarcinoma, Ovarian carcinoma tissue. IP: HeLa.
常规说明	This product is a recombinant monoclonal antibody, which offers several advantages including: <ul style="list-style-type: none"> <li>- High batch-to-batch consistency and reproducibility</li> <li>- Improved sensitivity and specificity</li> <li>- Long-term security of supply</li> <li>- Animal-free production</li> </ul> For more information <a href="#">see here</a> . Our RabMAb <sup>®</sup> technology is a patented hybridoma-based technology for making rabbit monoclonal antibodies. For details on our patents, please refer to <a href="#">RabMAb<sup>®</sup> patents</a> . Mouse, Rat: We have preliminary internal testing data to indicate this antibody may not react with these species. Please contact us for more information.

#### 性能

形式	Liquid
存放说明	Shipped at 4°C. Store at +4°C short term (1-2 weeks). Upon delivery aliquot. Store at -20°C. Stable for 12 months at -20°C.

存储溶液	pH: 7.20 Preservative: 0.05% Sodium azide Constituents: 0.1% BSA, 40% Glycerol (glycerin, glycerine), 9.85% Tris glycine, 50% Tissue culture supernatant
纯度	Tissue culture supernatant
克隆	单克隆
克隆编号	EPR3198
同种型	IgG

**The Abpromise guarantee**      **Abpromise™承诺保证使用ab92554于以下的经测试应用**

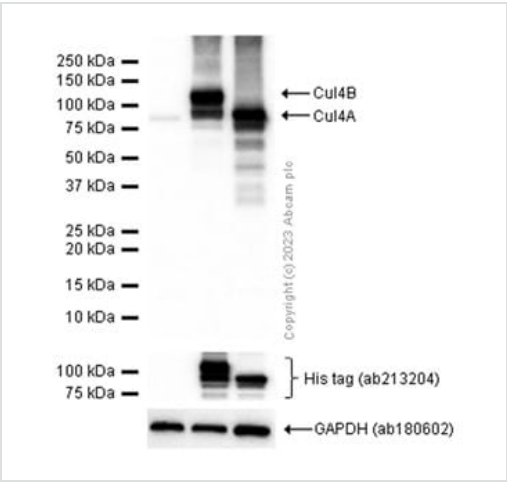
应用	Ab评论	说明
WB		1/20000 - 1/100000. Predicted molecular weight: 88 kDa.
IP		1/50.
IHC-P		1/100 - 1/250. Perform heat mediated antigen retrieval via the pressure cooker method before commencing with IHC staining protocol.

**靶标**

**功能**

Core component of multiple cullin-RING-based E3 ubiquitin-protein ligase complexes which mediate the ubiquitination and subsequent proteasomal degradation of target proteins. As a scaffold protein may contribute to catalysis through positioning of the substrate and the ubiquitin-conjugating enzyme. The E3 ubiquitin-protein ligase activity of the complex is dependent on the neddylation of the cullin subunit and is inhibited by the association of the deneddylated cullin subunit with TIP120A/CAND1. The functional specificity of the E3 ubiquitin-protein ligase complex depends on the variable substrate recognition component. DCX(DET1-COP1) directs ubiquitination of JUN. DCX(DDB2) directs ubiquitination of XPC. In association with RBX1, DDB1 and DDB2 is required for histone H3 and histone H4 ubiquitination in response to ultraviolet and may be important for subsequent DNA repair. DCX(DTL) plays a role in PCNA-dependent polyubiquitination of CDT1 and MDM2-dependent ubiquitination of TP53 in response to radiation-induced DNA damage and during DNA replication. In association with DDB1 and SKP2 probably is involved in ubiquitination of CDKN1B/p27kip. Is involved in ubiquitination of HOXA9.

**序列相似性** Belongs to the cullin family.



Western blot - Anti-Cullin 4A/CUL-4A antibody [EPR3198] (ab92554)

**All lanes :** Anti-Cullin 4A/CUL-4A antibody [EPR3198] (ab92554) at 1/10000 dilution

- Lane 1 :** HEK-293 (Human embryonic kidney epithelial cell) transfected with blank vectors whole cell lysate
- Lane 2 :** HEK-293 (Human embryonic kidney epithelial cell) transfected with human full length Cul4B expression vectors whole cell lysate
- Lane 3 :** HEK-293 (Human embryonic kidney epithelial cell) transfected with human full length Cul4A expression vectors whole cell lysate

Lysates/proteins at 20 µg per lane.

**Secondary**

**All lanes :** Goat Anti-Rabbit IgG H&L (HRP) ([ab97051](#)) at 1/20000 dilution

**Predicted band size:** 88 kDa  
**Observed band size:** 104,88 kDa

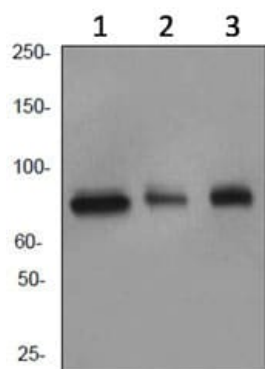
**Exposure time:** 1 second

**Blocking buffer and concentration:** 5% NFDm/TBST.

**Diluting buffer and concentration:** 5% NFDm/TBST.

Ab92554 recognizes human Cul4A and Cul4B overexpression vectors.

[ab180602](#) was used as a loading control.



Western blot - Anti-Cullin 4A/CUL-4A antibody [EPR3198] (ab92554)

**All lanes :** Anti-Cullin 4A/CUL-4A antibody [EPR3198] (ab92554) at 1/20000 dilution

**Lane 1 :** Hela cell lysate

**Lane 2 :** A375 cell lysate

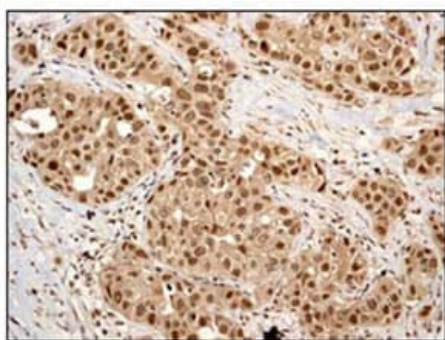
**Lane 3 :** 293T cell lysate

Lysates/proteins at 10 µg per lane.

#### Secondary

**All lanes :** HRP labelled goat anti-rabbit at 1/2000 dilution

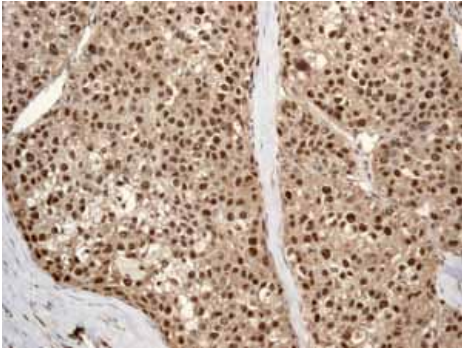
**Predicted band size:** 88 kDa



Immunohistochemistry (Formalin/PFA-fixed paraffin-embedded sections) - Anti-Cullin 4A/CUL-4A antibody [EPR3198] (ab92554)

ab92554 at 1/100 dilution staining Cullin 4A/CUL-4A in Human breast carcinoma by Immunohistochemistry Formalin-fixed, Paraffin-embedded tissue. Detection: DAB staining.

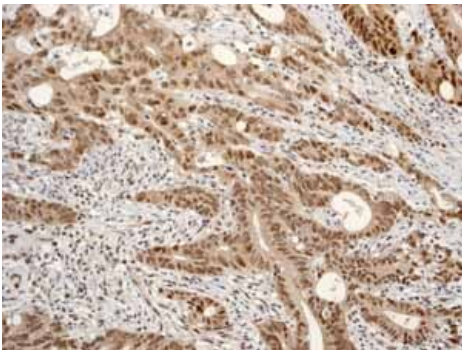
Perform heat mediated antigen retrieval via the pressure cooker method before commencing with IHC staining protocol.



Immunohistochemistry (Formalin/PFA-fixed paraffin-embedded sections) - Anti-Cullin 4A/CUL-4A antibody [EPR3198] (ab92554)

ab92554 showing positive staining in Hepatocellular carcinoma tissue.

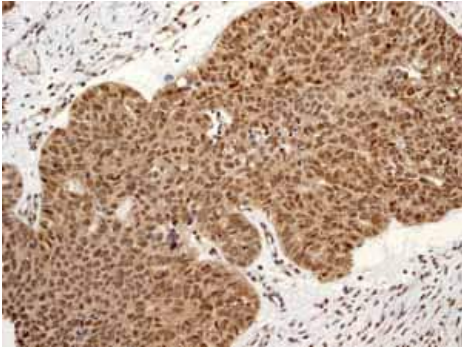
Perform heat mediated antigen retrieval via the pressure cooker method before commencing with IHC staining protocol.



Immunohistochemistry (Formalin/PFA-fixed paraffin-embedded sections) - Anti-Cullin 4A/CUL-4A antibody [EPR3198] (ab92554)

ab92554 showing positive staining in Colonic adenocarcinoma tissue.

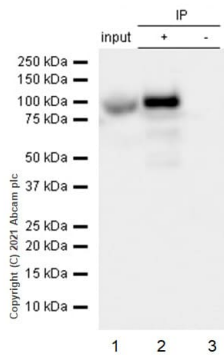
Perform heat mediated antigen retrieval via the pressure cooker method before commencing with IHC staining protocol.



Immunohistochemistry (Formalin/PFA-fixed paraffin-embedded sections) - Anti-Cullin 4A/CUL-4A antibody [EPR3198] (ab92554)

ab92554 showing positive staining in Ovarian carcinoma tissue.

Perform heat mediated antigen retrieval via the pressure cooker method before commencing with IHC staining protocol.



Immunoprecipitation - Anti-Cullin 4A/CUL-4A antibody [EPR3198] (ab92554)

Cullin 4A/CUL-4A was immunoprecipitated from 0.35 mg HeLa (Human cervix adenocarcinoma epithelial cell) whole cell lysate 10 µg with 92554 at 1/50 dilution (2µg). VeriBlot for IP Detection Reagent (HRP)([ab131366](#)) was used at 1/5000 dilution.

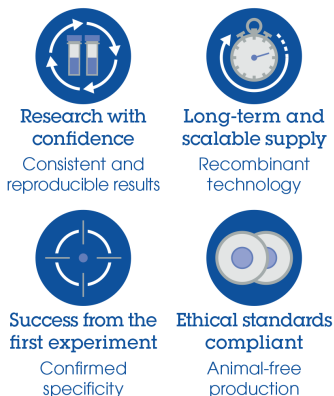
**Lane 1:** HeLa (Human cervix adenocarcinoma epithelial cell) whole cell lysate 10 µg

**Lane 2:** ab92554 IP in HeLa whole cell lysate

**Lane 3:** Rabbit monoclonal IgG ([ab172730](#)) instead of ab92554 in HeLa whole cell lysate

Blocking and dilution buffer and concentration: 5% NFDM/TBST.

### Why choose a recombinant antibody?



Anti-Cullin 4A/CUL-4A antibody [EPR3198] (ab92554)

### **Our Abpromise to you: Quality guaranteed and expert technical support**

---

- Replacement or refund for products not performing as stated on the datasheet
- Valid for 12 months from date of delivery
- Response to your inquiry within 24 hours
  
- We provide support in Chinese, English, French, German, Japanese and Spanish
- Extensive multi-media technical resources to help you
- We investigate all quality concerns to ensure our products perform to the highest standards

If the product does not perform as described on this datasheet, we will offer a refund or replacement. For full details of the Abpromise, please visit <https://www.abcam.cn/abpromise> or contact our technical team.

### **Terms and conditions**

---

- Guarantee only valid for products bought direct from Abcam or one of our authorized distributors