


Anti-CTRP6 antibody ab115455

[1 References](#) [2 图像](#)

概述

| | |
|-------|---|
| 产品名称 | Anti-CTRP6抗体 |
| 描述 | 兔多克隆抗体to CTRP6 |
| 宿主 | Rabbit |
| 经测试应用 | 适用于: IHC-P |
| 种属反应性 | 与反应: Human 预测可用于: Mouse  |
| 免疫原 | Synthetic peptide conjugated to KLH, corresponding to 15 amino acids from near the C-terminus of Human CTRP6. |
| 阳性对照 | Human Kidney and Small Intestine tissues |
| 常规说明 | <p>The Life Science industry has been in the grips of a reproducibility crisis for a number of years. Abcam is leading the way in addressing this with our range of recombinant monoclonal antibodies and knockout edited cell lines for gold-standard validation. Please check that this product meets your needs before purchasing.</p> <p>If you have any questions, special requirements or concerns, please send us an inquiry and/or contact our Support team ahead of purchase. Recommended alternatives for this product can be found below, along with publications, customer reviews and Q&As</p> |

性能

| | |
|------|---|
| 形式 | Liquid |
| 存放说明 | Shipped at 4°C. Store at +4°C short term (1-2 weeks). Store at -20°C or -80°C. Avoid freeze / thaw cycle. |
| 存储溶液 | <p>pH: 7.4</p> <p>Preservative: 0.02% Sodium azide</p> <p>Constituent: 99% PBS</p> |
| 纯度 | Immunogen affinity purified |
| 克隆 | 多克隆 |
| 同种型 | IgG |

应用

The Abpromise guarantee

Abpromise™ 承诺保证使用ab115455于以下的经测试应用

“应用说明”部分 下显示的仅为推荐的起始稀释度;实际最佳的稀释度/浓度应由使用者检定。

| 应用 | Ab评论 | 说明 |
|-------|------|--|
| IHC-P | | Use a concentration of 5 µg/ml. Perform heat mediated antigen retrieval with citrate buffer pH 6 before commencing with IHC staining protocol. |

靶标

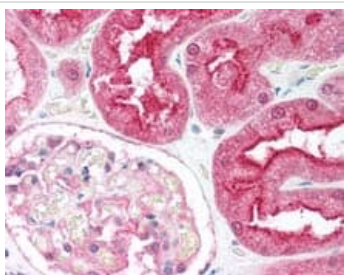
序列相似性

Contains 1 C1q domain.
Contains 1 collagen-like domain.

细胞定位

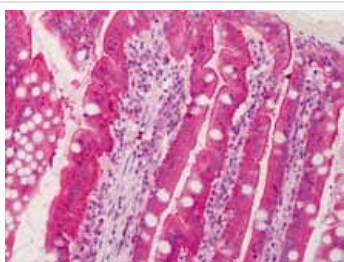
Secreted.

图片



Immunohistochemistry (Formalin/PFA-fixed paraffin-embedded sections) - Anti-CTRP6 antibody (ab115455)

ab115455, at 5 µg/ml, staining CTRP6 in formalin-fixed, paraffin-embedded Human Kidney tissue by Immunohistochemistry using a biotinylated goat anti-rabbit IgG secondary antibody, alkaline phosphatase-streptavidin and chromogen.



Immunohistochemistry (Formalin/PFA-fixed paraffin-embedded sections) - Anti-CTRP6 antibody (ab115455)

ab115455, at 5 µg/ml, staining CTRP6 in formalin-fixed, paraffin-embedded Human Small Intestine tissue by Immunohistochemistry using a biotinylated goat anti-rabbit IgG secondary antibody, alkaline phosphatase-streptavidin and chromogen.

Please note: All products are "FOR RESEARCH USE ONLY. NOT FOR USE IN DIAGNOSTIC PROCEDURES"

Our Abpromise to you: Quality guaranteed and expert technical support

- Replacement or refund for products not performing as stated on the datasheet
- Valid for 12 months from date of delivery
- Response to your inquiry within 24 hours

- We provide support in Chinese, English, French, German, Japanese and Spanish
- Extensive multi-media technical resources to help you
- We investigate all quality concerns to ensure our products perform to the highest standards

If the product does not perform as described on this datasheet, we will offer a refund or replacement. For full details of the Abpromise, please visit <https://www.abcam.cn/abpromise> or contact our technical team.

Terms and conditions

- Guarantee only valid for products bought direct from Abcam or one of our authorized distributors