

Anti-CTRP3 antibody ab36870

[15 References](#) [3 图像](#)

概述

产品名称	Anti-CTRP3抗体
描述	兔多克隆抗体to CTRP3
宿主	Rabbit
经测试应用	适用于: WB, IHC-P, ICC/IF
种属反应性	与反应: Mouse
免疫原	A 16 amino acid peptide from near the center of human CTRP3.
阳性对照	Mouse heart cell lysate.
常规说明	<p>The Life Science industry has been in the grips of a reproducibility crisis for a number of years. Abcam is leading the way in addressing this with our range of recombinant monoclonal antibodies and knockout edited cell lines for gold-standard validation. Please check that this product meets your needs before purchasing.</p> <p>If you have any questions, special requirements or concerns, please send us an inquiry and/or contact our Support team ahead of purchase. Recommended alternatives for this product can be found below, along with publications, customer reviews and Q&As</p>

性能

形式	Liquid
存放说明	Shipped at 4°C. Store at +4°C.
存储溶液	pH: 7.2 Preservative: 0.02% Sodium azide Constituent: PBS
纯度	Immunogen affinity purified
克隆	多克隆
同种型	IgG

应用

The Abpromise guarantee **Abpromise™**承诺保证使用ab36870于以下的经测试应用

“应用说明”部分 下显示的仅为推荐的起始稀释度;实际最佳的稀释度/浓度应由使用者检定。

应用	Ab评论	说明
WB		Use a concentration of 1 - 2 µg/ml. Detects a band of approximately 36 kDa (predicted molecular weight: 27 kDa).
IHC-P		Use a concentration of 2 µg/ml.
ICC/IF		Use a concentration of 20 µg/ml.

靶标

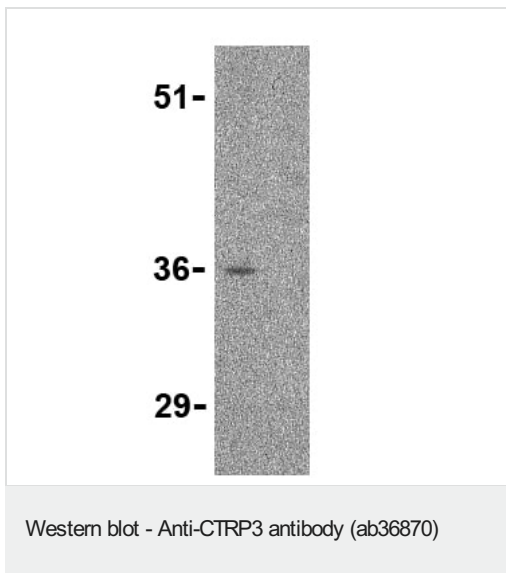
序列相似性

Contains 1 C1q domain.
Contains 1 collagen-like domain.

细胞定位

Secreted.

图片



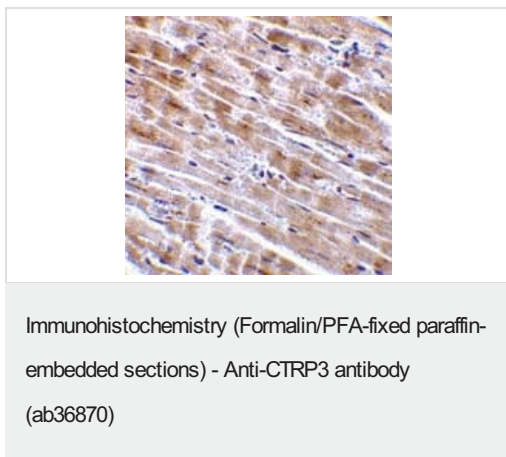
All lanes : Anti-CTRP3 antibody (ab36870) at 1 µg/ml

All lanes : Mouse heart cell lysate

Predicted band size: 27 kDa

Observed band size: 36 kDa

In lane 1 (left) no blocking peptide present; in lane 2 (right) blocking peptide is present. These proteins are often highly modified post-translationally and may migrate in SDS-PAGE at positions other than their predicted size.



ab36870 at 2µg/ml staining CTRP3 in mouse heart tissue by IHC

Immunocytochemistry/ Immunofluorescence - Anti-CTRP3 antibody (ab36870)

Immunofluorescence of CTRP3 in Mouse Heart cells using ab36870 at 10 ug/ml.

Please note: All products are "FOR RESEARCH USE ONLY. NOT FOR USE IN DIAGNOSTIC PROCEDURES"

Our Abpromise to you: Quality guaranteed and expert technical support

- Replacement or refund for products not performing as stated on the datasheet
- Valid for 12 months from date of delivery
- Response to your inquiry within 24 hours
- We provide support in Chinese, English, French, German, Japanese and Spanish
- Extensive multi-media technical resources to help you
- We investigate all quality concerns to ensure our products perform to the highest standards

If the product does not perform as described on this datasheet, we will offer a refund or replacement. For full details of the Abpromise, please visit <https://www.abcam.cn/abpromise> or contact our technical team.

Terms and conditions

- Guarantee only valid for products bought direct from Abcam or one of our authorized distributors