

Anti-CTR9 antibody ab84487

★★★★★ [2 Abreviews](#) [2 References](#) [3 图像](#)

概述

产品名称	Anti-CTR9抗体
描述	兔多克隆抗体to CTR9
宿主	Rabbit
经测试应用	适用于: IHC-P
种属反应性	与反应: Mouse, Human 预测可用于: Rat, Chimpanzee, Rhesus monkey, Gorilla, Chinese hamster, Orangutan, Elephant
免疫原	Synthetic peptide, corresponding to amino acids 1123-1173 of Human Paf1/RNA polymerase II complex component homolog CTR9 using the numbering given in entry NP_055448.1
常规说明	<p>The Life Science industry has been in the grips of a reproducibility crisis for a number of years. Abcam is leading the way in addressing this with our range of recombinant monoclonal antibodies and knockout edited cell lines for gold-standard validation. Please check that this product meets your needs before purchasing.</p> <p>If you have any questions, special requirements or concerns, please send us an inquiry and/or contact our Support team ahead of purchase. Recommended alternatives for this product can be found below, along with publications, customer reviews and Q&As</p>

性能

形式	Liquid
存放说明	Shipped at 4°C. Upon delivery aliquot and store at -20°C. Avoid freeze / thaw cycles.
存储溶液	pH: 6.8 Preservative: 0.09% Sodium azide Constituents: 0.1% BSA, Tris buffered saline
纯度	Immunogen affinity purified
纯化说明	Antibody was affinity purified using an epitope specific to CTR9 immobilized on solid support.
克隆	多克隆
同种型	IgG

应用

The Abpromise guarantee

Abpromise™ 承诺保证使用ab84487于以下的经测试应用

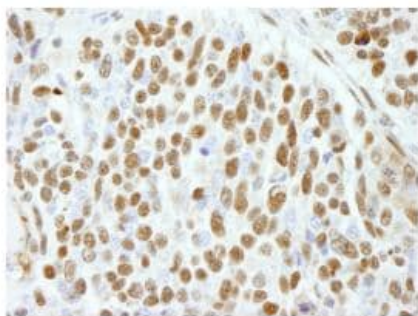
“应用说明”部分 下显示的仅为推荐的起始稀释度;实际最佳的稀释度/浓度应由使用者检定。

应用	Ab评论	说明
IHC-P		1/100 - 1/500. Antigen retrieval is recommended: retrieval with citrate buffer will enhance staining. Likely to work with frozen sections

靶标

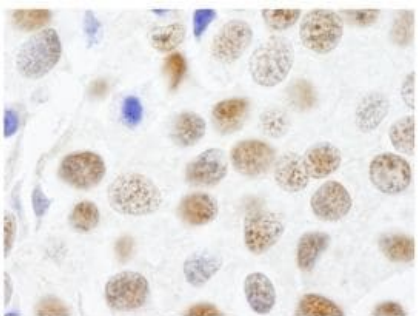
组织特异性	Widely expressed.
序列相似性	Contains 16 TPR repeats.
细胞定位	Nucleus speckle. Found in speckles.

图片



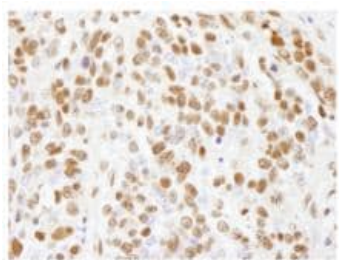
Immunohistochemistry (Formalin/PFA-fixed paraffin-embedded sections) - Anti-CTR9 antibody (ab84487)

ab84487 at 1/250 dilution staining formalin-fixed, paraffin-embedded section of human breast carcinoma by immunohistochemistry.
Detection: DAB staining.



Immunohistochemistry (Formalin/PFA-fixed paraffin-embedded sections) - Anti-CTR9 antibody (ab84487)

ab 84487 at 1/250 dilution staining formalin-fixed, paraffin-embedded section of human breast carcinoma by immunohistochemistry.
Detection: DAB staining



ab 84487 at 1/250 dilution staining formalin-fixed, paraffin-embedded section of mouse teratoma by immunohistochemistry.
Detection: DAB staining

Immunohistochemistry (Formalin/PFA-fixed paraffin-embedded sections) - Anti-CTR9 antibody (ab84487)

Please note: All products are "FOR RESEARCH USE ONLY. NOT FOR USE IN DIAGNOSTIC PROCEDURES"

Our Abpromise to you: Quality guaranteed and expert technical support

- Replacement or refund for products not performing as stated on the datasheet
- Valid for 12 months from date of delivery
- Response to your inquiry within 24 hours
- We provide support in Chinese, English, French, German, Japanese and Spanish
- Extensive multi-media technical resources to help you
- We investigate all quality concerns to ensure our products perform to the highest standards

If the product does not perform as described on this datasheet, we will offer a refund or replacement. For full details of the Abpromise, please visit <https://www.abcam.cn/abpromise> or contact our technical team.

Terms and conditions

- Guarantee only valid for products bought direct from Abcam or one of our authorized distributors