


# Anti-CtIP antibody ab117722

**1 References**   **4 图像**

### 概述

产品名称	Anti-CtIP 抗体
描述	兔多克隆抗体 to CtIP
宿主	Rabbit
经测试应用	适用于: WB, IHC-P
种属反应性	与反应: Mouse, Human 预测可用于: Rat 
免疫原	Synthetic peptide corresponding to Human CtIP (internal sequence) conjugated to keyhole limpet haemocyanin. Database link: <a href="#">Q99708</a>
阳性对照	Human Breast, Colon Myenteric Plexus and Pancreas tissues.
常规说明	<p>The Life Science industry has been in the grips of a reproducibility crisis for a number of years. Abcam is leading the way in addressing this with our range of recombinant monoclonal antibodies and knockout edited cell lines for gold-standard validation. Please check that this product meets your needs before purchasing.</p> <p>If you have any questions, special requirements or concerns, please send us an inquiry and/or contact our Support team ahead of purchase. Recommended alternatives for this product can be found below, along with publications, customer reviews and Q&amp;As</p>

### 性能

形式	Liquid
存放说明	Shipped at 4°C. Upon delivery aliquot and store at -20°C. Avoid freeze / thaw cycles.
存储溶液	pH: 7.4 Preservative: 0.02% Sodium azide Constituent: PBS
纯度	Immunogen affinity purified
克隆	多克隆
同种型	IgG

### 应用

The Abpromise guarantee

Abpromise™承诺保证使用ab117722于以下的经测试应用

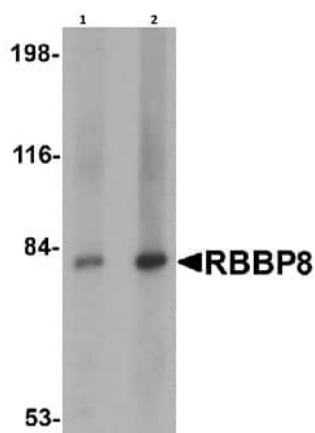
“应用说明”部分 下显示的仅为推荐的起始稀释度;实际最佳的稀释度/浓度应由使用者检定。

应用	Ab评论	说明
WB		Use a concentration of 1 - 2 µg/ml. Predicted molecular weight: 101 kDa.
IHC-P		Use a concentration of 5 µg/ml. Perform heat mediated antigen retrieval with citrate buffer pH 6 before commencing with IHC staining protocol.

靶标

功能	Endonuclease that cooperates with the MRE11-RAD50-NBN (MRN) complex in processing meiotic and mitotic double-strand breaks (DSBs) by ensuring both resection and intrachromosomal association of the broken ends. Functions downstream of the MRN complex and ATM, promotes ATR activation and its recruitment to DSBs in the S/G2 phase facilitating the generation of ssDNA. Component of the BRCA1-RBBP8 complex that regulates CHEK1 activation and controls cell cycle G2/M checkpoints on DNA damage. Promotes microhomology-mediated alternative end joining (A-NHEJ) during class-switch recombination and plays an essential role in chromosomal translocations.
疾病相关	Seckel syndrome 2 Jawad syndrome Genetic variability in RBBP8 is noted as a factor in BRCA1-associated breast cancer risk (PubMed:21799032). Exhibits sensitivity to tamoxifen in certain breast cancer cell lines (PubMed:18171986).
序列相似性	Belongs to the COM1/SAE2/CtIP family.
结构域	The PXDLS motif binds to a cleft in CtBP proteins. The damage-recruitment motif is required for DNA binding and translocation to sites of DNA damage.
翻译后修饰	Acetylated. Deacetylation by SIRT6 upon DNA damage promotes DNA end resection. Hyperphosphorylation upon ionizing radiation results in dissociation from BRCA1. Phosphorylation at Thr-847 by CDK1 is essential for the recruitment to DNA and the DNA repair function. Phosphorylated on Ser-327 as cells enter G2 phase. This phosphorylation is required for binding BRCA1 and for the G2/M DNA damage transition checkpoint control. Ubiquitinated (PubMed:14654780, PubMed:16818604). Ubiquitination at multiple sites by BRCA1 (via its N-terminal RING domain) does not lead to its proteosomal degradation but instead the ubiquitinated RBBP8 binds to chromatin following DNA damage and may play a role in G2/M checkpoint control (PubMed:16818604). Ubiquitinated by RNF138 at its N-terminus (PubMed:26502057).
细胞定位	Nucleus. Chromosome. Associates with sites of DNA damage in S/G2 phase (PubMed:10764811). Ubiquitinated RBBP8 binds to chromatin following DNA damage (PubMed:16818604).

图片



Western blot - Anti-CtIP antibody (ab117722)

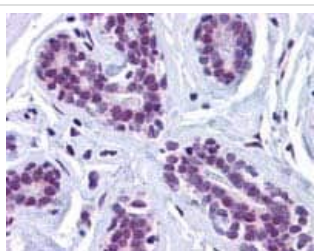
**Lane 1** : Anti-CtIP antibody (ab117722) at 1 µg/ml

**Lane 2** : Anti-CtIP antibody (ab117722) at 2 µg/ml

**Lane 1** : Mouse spleen tissue lystae

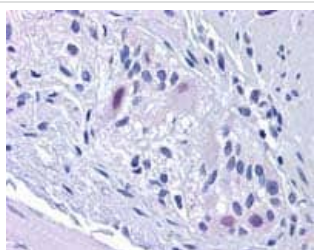
**Lane 2** : Mouse spleen tissue lysate

**Predicted band size:** 101 kDa



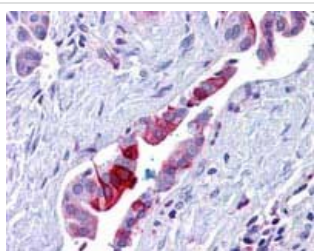
Immunohistochemistry (Formalin/PFA-fixed paraffin-embedded sections) - Anti-CtIP antibody (ab117722)

Immunohistochemistry Image of Human Breast: Formalin-Fixed, Paraffin-Embedded (FFPE) stained with anti-CTIP antibody (ab117722).



Immunohistochemistry (Formalin/PFA-fixed paraffin-embedded sections) - Anti-CtIP antibody (ab117722)

Immunohistochemistry Image of Human Colon, Myenteric Plexus: Formalin-Fixed, Paraffin-Embedded (FFPE) stained with anti-CTIP antibody (ab117722).



Immunohistochemistry (Formalin/PFA-fixed paraffin-embedded sections) - Anti-CtIP antibody (ab117722)

Immunohistochemistry Image of Human Pancreas, Duct: Formalin-Fixed, Paraffin-Embedded (FFPE) stained with anti-CTIP antibody (ab117722).

**Please note:** All products are "FOR RESEARCH USE ONLY. NOT FOR USE IN DIAGNOSTIC PROCEDURES"

### **Our Abpromise to you: Quality guaranteed and expert technical support**

---

- Replacement or refund for products not performing as stated on the datasheet
- Valid for 12 months from date of delivery
- Response to your inquiry within 24 hours
- We provide support in Chinese, English, French, German, Japanese and Spanish
- Extensive multi-media technical resources to help you
- We investigate all quality concerns to ensure our products perform to the highest standards

If the product does not perform as described on this datasheet, we will offer a refund or replacement. For full details of the Abpromise, please visit <https://www.abcam.cn/abpromise> or contact our technical team.

### **Terms and conditions**

---

- Guarantee only valid for products bought direct from Abcam or one of our authorized distributors