

### Anti-CT A antibody [EPR3941] ab92440

**重组** RabMAb

★★★★★ **1 Abreviews** 3 图像

#### 概述

产品名称	Anti-CT A抗体[EPR3941]
描述	兔单克隆抗体[EPR3941] to CT A
宿主	Rabbit
经测试应用	<b>适用于:</b> WB, ICC/IF <b>不适用于:</b> IHC-P
种属反应性	<b>与反应:</b> Human
免疫原	Synthetic peptide. This information is proprietary to Abcam and/or its suppliers.
阳性对照	A549, K562, HeLa and HepG2 cell lysates; HeLa cells
常规说明	This product is a recombinant monoclonal antibody, which offers several advantages including: <ul style="list-style-type: none"> <li>- High batch-to-batch consistency and reproducibility</li> <li>- Improved sensitivity and specificity</li> <li>- Long-term security of supply</li> <li>- Animal-free production</li> </ul> For more information <a href="#">see here</a> . Our RabMAb <sup>®</sup> technology is a patented hybridoma-based technology for making rabbit monoclonal antibodies. For details on our patents, please refer to <a href="#">RabMAb<sup>®</sup> patents</a> .  Mouse, Rat: We have preliminary internal testing data to indicate this antibody may not react with these species. Please contact us for more information.

#### 性能

形式	Liquid
存放说明	Shipped at 4°C. Store at -20°C. Stable for 12 months at -20°C.
存储溶液	pH: 7.20 Preservative: 0.05% Sodium azide Constituents: 0.1% BSA, 40% Glycerol (glycerin, glycerine), 9.85% Tris glycine, 50% Tissue culture supernatant
纯度	Tissue culture supernatant
克隆	单克隆

克隆编号	EPR3941
同种型	IgG

应用

The Abpromise guarantee      **Abpromise™**承诺保证使用ab92440于以下的经测试应用

“应用说明”部分 下显示的仅为推荐的起始稀释度;实际最佳的稀释度/浓度应由使用者检定。

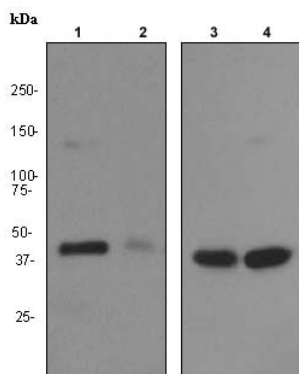
应用	Ab评论	说明
WB	★★★★☆ (1)	
ICC/IF		

应用说明	<p>Flow Cyt: 1/500 - 1/1000.</p> <p>ICC/IF: 1/100 - 1/250.</p> <p>IP: 1/10 - 1/100.</p> <p>WB: 1/1000 - 1/10000. Predicted molecular weight: 42 kDa.</p> <p>Is unsuitable for IHC-P.</p> <p>Not yet tested in other applications.</p> <p>Optimal dilutions/concentrations should be determined by the end user.</p>
------	---

靶标

功能	Controls phosphatidylcholine synthesis.
通路	Phospholipid metabolism; phosphatidylcholine biosynthesis; phosphatidylcholine from phosphocholine: step 1/2.
序列相似性	Belongs to the cytidyltransferase family.
翻译后修饰	The serine residues of the C-terminus are phosphorylated. The inactive soluble form is stabilized by phosphorylation, the active membrane bound form is promoted by anionic lipids or diacylglycerol, and is stabilized by dephosphorylation.
细胞定位	Cytoplasm > cytosol. Membrane. It can interconvert between an inactive cytosolic form and an active membrane-bound form.

图片



Western blot - Anti-CT A antibody [EPR3941]  
(ab92440)

**All lanes** : Anti-CT A antibody [EPR3941] (ab92440) at 1/1000 dilution

**Lane 1** : A549 cell lysate

**Lane 2** : K562 cell lysate

**Lane 3** : HeLa cell lysate

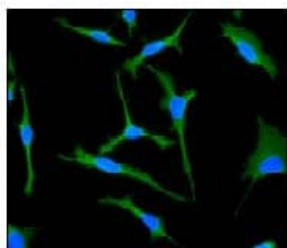
**Lane 4** : HepG2 cell lysate

Lysates/proteins at 10 µg per lane.

### Secondary

**All lanes** : HRP labelled goat anti-rabbit at 1/2000 dilution

**Predicted band size:** 42 kDa



Immunocytochemistry/ Immunofluorescence - Anti-  
CT A antibody [EPR3941] (ab92440)

ab92440, at 1/100 dilution, staining CT A in HeLa cells by Immunofluorescence.

### Why choose a recombinant antibody?



**Research with confidence**  
Consistent and reproducible results



**Long-term and scalable supply**  
Recombinant technology



**Success from the first experiment**  
Confirmed specificity



**Ethical standards compliant**  
Animal-free production

Anti-CT A antibody [EPR3941] (ab92440)

**Please note:** All products are "FOR RESEARCH USE ONLY. NOT FOR USE IN DIAGNOSTIC PROCEDURES"

### Our Abpromise to you: Quality guaranteed and expert technical support

---

- Replacement or refund for products not performing as stated on the datasheet
- Valid for 12 months from date of delivery
- Response to your inquiry within 24 hours
- We provide support in Chinese, English, French, German, Japanese and Spanish
- Extensive multi-media technical resources to help you
- We investigate all quality concerns to ensure our products perform to the highest standards

If the product does not perform as described on this datasheet, we will offer a refund or replacement. For full details of the Abpromise, please visit <https://www.abcam.cn/abpromise> or contact our technical team.

### Terms and conditions

---

- Guarantee only valid for products bought direct from Abcam or one of our authorized distributors