

Anti-CT A antibody [EPR3940(2)] ab109263

重组 RabMAb

9 References 9 图像

概述	
产品名称	Anti-CT A抗体[EPR3940(2)]
描述	兔单克隆抗体[EPR3940(2)] to CT A
宿主	Rabbit
经测试应用	适用于: WB, IHC-P, ICC/IF 不适用于: Flow Cyt or IP
种属反应性	与反应: Mouse, Human
免疫原	Synthetic peptide. This information is proprietary to Abcam and/or its suppliers.
阳性对照	WB: HeLa, HepG2, A549, K562 , Mouse brain, and RAW 264.7 lysates. IHC-P: human colon, human prostatic hyperplasia tissue and mouse pancreas tissues. ICC/IF: HeLa cells.
常规说明	<p>This product is a recombinant monoclonal antibody, which offers several advantages including:</p> <ul style="list-style-type: none"><li>- High batch-to-batch consistency and reproducibility</li><li>- Improved sensitivity and specificity</li><li>- Long-term security of supply</li><li>- Animal-free production</li></ul> <p>For more information <a href="#">see here</a>.</p> <p>Our RabMAb<sup>®</sup> technology is a patented hybridoma-based technology for making rabbit monoclonal antibodies. For details on our patents, please refer to <a href="#">RabMAb<sup>®</sup> patents</a>.</p> <p>Rat: We have preliminary internal testing data to indicate this antibody may not react with this species. Please contact us for more information.</p>
性能	
形式	Liquid
存放说明	Shipped at 4°C. Store at -20°C. Stable for 12 months at -20°C.
存储溶液	pH: 7.20 Preservative: 0.01% Sodium azide Constituents: 59% PBS, 40% Glycerol (glycerin, glycerine), 0.05% BSA
纯度	Protein A purified
克隆	单克隆

同种型 IgG

## The Abpromise guarantee

“应用说明”部分下显示的仅为推荐的起始稀释度;实际最佳的稀释度/浓度应由使用者检定。

应用	Ab评论	说明
WB		1/1000 - 1/10000. Predicted molecular weight: 42 kDa.
IHC-P		1/500 - 1/1000. Perform heat mediated antigen retrieval before commencing with IHC staining protocol. 1:500 in human tissues / 1:1000 in mouse tissues See <b><u>IHC antigen retrieval protocols</u></b> .
ICC/IF		1/50.

**应用说明** Is unsuitable for Flow Cyt or IP.

## 功能

Controls phosphatidylcholine synthesis.

## 通路

Phospholipid metabolism; phosphatidylcholine biosynthesis; phosphatidylcholine from phosphocholine: step 1/2.

## 序列相似性

Belongs to the cytidyltransferase family.

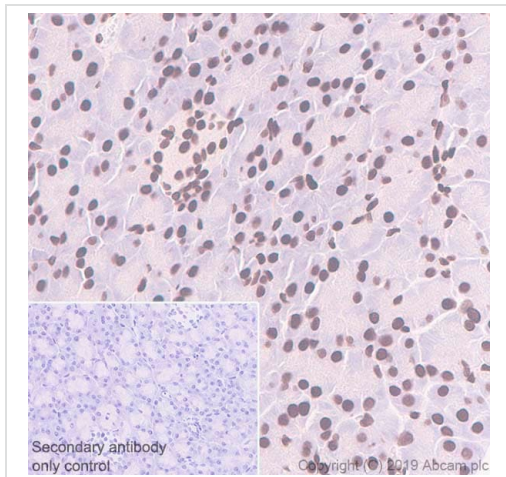
### 翻译后修饰

The serine residues of the C-terminus are phosphorylated. The inactive soluble form is stabilized by phosphorylation, the active membrane bound form is promoted by anionic lipids or diacylglycerol, and is stabilized by dephosphorylation.

## 细胞定位

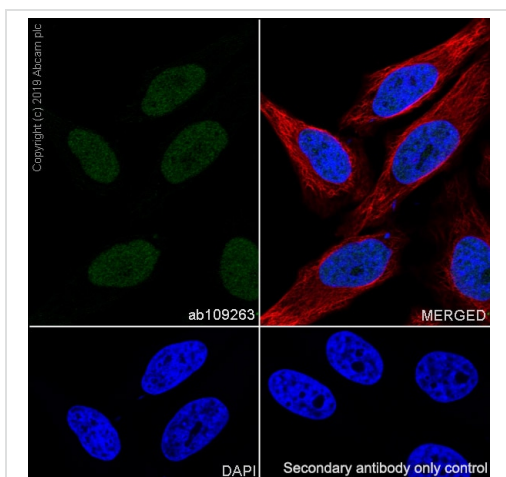
Cytoplasm > cytosol. Membrane. It can interconvert between an inactive cytosolic form and an active membrane-bound form.

图片



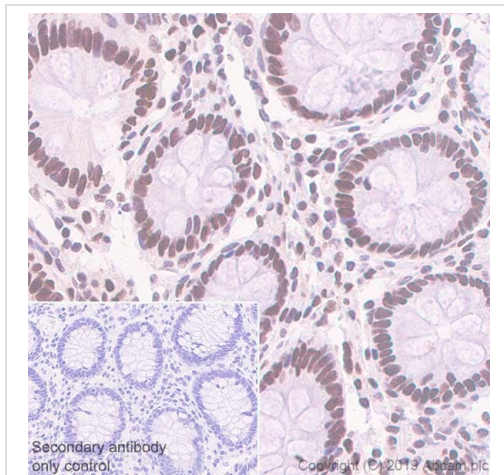
Immunohistochemistry (Formalin/PFA-fixed paraffin-embedded sections) - Anti-CT A antibody [EPR3940(2)] (ab109263)

Immunohistochemistry (Formalin/PFA-fixed paraffin-embedded sections) analysis of mouse pancreas tissue sections labeling CT A with Purified ab109263 at 1:1000 dilution (0.53 µg/ml). Perform heat mediated antigen retrieval using **ab93684** (Tris/EDTA buffer, pH 9.0). Purified ImmunoHistoProbe one step HRP Polymer (ready to use) was used for detection. Negative control: PBS instead of the primary antibody. Hematoxylin was used as a counterstain.



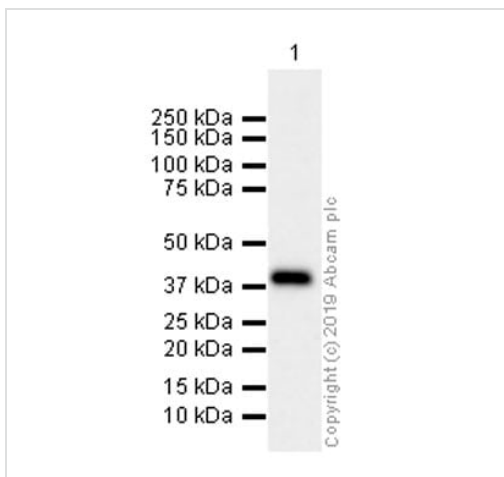
Immunocytochemistry/ Immunofluorescence - Anti-CT A antibody [EPR3940(2)] (ab109263)

Immunocytochemistry/ Immunofluorescence analysis of HeLa (Human cervix adenocarcinoma epithelial cell) cells labeling CT A with Purified ab109263 at 1:50 dilution (10 µg/ml). Cells were fixed in 4% Paraformaldehyde and permeabilized with 0.1% tritonX-100. Cells were counterstained with Ab195889 Anti-alpha Tubulin antibody [DM1A] - Microtubule Marker (Alexa Fluor® 594) 1:200 (2.5 µg/ml). Goat anti rabbit IgG (Alexa Fluor® 488, **ab150077**) was used as the secondary antibody at 1:1000 (2 µg/ml) dilution. DAPI (blue) was used as nuclear counterstain. PBS instead of the primary antibody was used as the secondary antibody only control.



Immunohistochemistry (Formalin/PFA-fixed paraffin-embedded sections) - Anti-CT A antibody [EPR3940(2)] (ab109263)

Immunohistochemistry (Formalin/PFA-fixed paraffin-embedded sections) analysis of human colon tissue sections labeling CT A with Purified ab109263 at 1:500 dilution (1.06 µg/ml). Perform heat mediated antigen retrieval using [ab93684](#) (Tris/EDTA buffer, pH 9.0). Purified ImmunoHistoProbe one step HRP Polymer (ready to use) was used for detection. Negative control: PBS instead of the primary antibody. Hematoxylin was used as a counterstain.



Western blot - Anti-CT A antibody [EPR3940(2)] (ab109263)

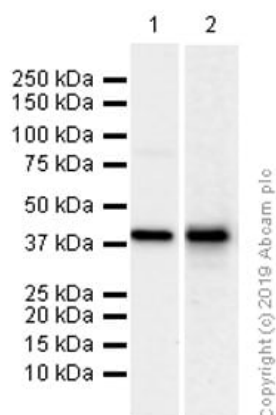
Anti-CT A antibody [EPR3940(2)] (ab109263) at 1/5000 dilution (Purified) + RAW 264.7 (Mouse Abelson murine leukemia virus-induced tumor macrophage) whole cell lysates at 20 µg

#### Secondary

Goat Anti-Rabbit IgG H&L (HRP) ([ab97051](#)) at 1/20000 dilution

**Predicted band size:** 42 kDa

**Observed band size:** 42 kDa



Western blot - Anti-CT A antibody [EPR3940(2)]  
(ab109263)

**All lanes :** Anti-CT A antibody [EPR3940(2)] (ab109263) at 1/5000 dilution (Purified)

**Lane 1 :** HeLa (Human cervix adenocarcinoma epithelial cell) whole cell lysates

**Lane 2 :** Mouse brain lysates

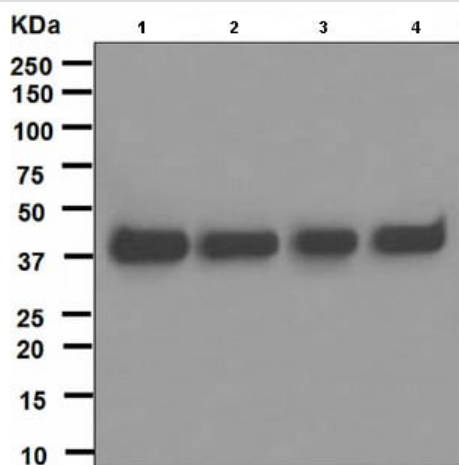
Lysates/proteins at 15 µg per lane.

#### Secondary

**All lanes :** Goat Anti-Rabbit IgG H&L (HRP) ([ab97051](#)) at 1/20000 dilution

**Predicted band size:** 42 kDa

**Observed band size:** 42 kDa



Western blot - Anti-CT A antibody [EPR3940(2)]  
(ab109263)

**All lanes :** Anti-CT A antibody [EPR3940(2)] (ab109263) at 1/1000 dilution

**Lane 1 :** HepG2 cell lysate

**Lane 2 :** HeLa cell lysate

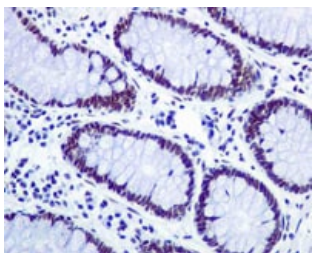
**Lane 3 :** A549 cell lysate

**Lane 4 :** K562 cell lysate

Lysates/proteins at 10 µg per lane.

**Predicted band size:** 42 kDa

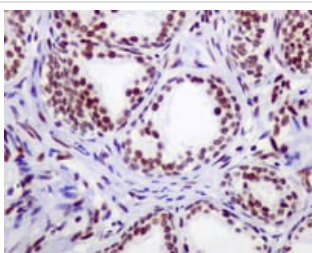
**Observed band size:** 42 kDa



Immunohistochemistry (Formalin/PFA-fixed paraffin-embedded sections) - Anti-CT A antibody [EPR3940(2)] (ab109263)

ab109263, at a 1/50 dilution, staining CT A in paraffin embedded Human colon tissue by Immunohistochemistry.

Perform heat mediated antigen retrieval before commencing with IHC staining protocol.



Immunohistochemistry (Formalin/PFA-fixed paraffin-embedded sections) - Anti-CT A antibody [EPR3940(2)] (ab109263)

ab109263, at a 1/50 dilution, staining CT A in paraffin embedded Human prostatic hyperplasia by Immunohistochemistry.

Perform heat mediated antigen retrieval before commencing with IHC staining protocol.

#### Why choose a recombinant antibody?



**Research with confidence**  
Consistent and reproducible results



**Long-term and scalable supply**  
Recombinant technology



**Success from the first experiment**  
Confirmed specificity



**Ethical standards compliant**  
Animal-free production

Anti-CT A antibody [EPR3940(2)] (ab109263)

**Please note:** All products are "FOR RESEARCH USE ONLY. NOT FOR USE IN DIAGNOSTIC PROCEDURES"

#### Our Abpromise to you: Quality guaranteed and expert technical support

- Replacement or refund for products not performing as stated on the datasheet

- Valid for 12 months from date of delivery
- Response to your inquiry within 24 hours
- We provide support in Chinese, English, French, German, Japanese and Spanish
- Extensive multi-media technical resources to help you
- We investigate all quality concerns to ensure our products perform to the highest standards

If the product does not perform as described on this datasheet, we will offer a refund or replacement. For full details of the Abpromise, please visit <https://www.abcam.cn/abpromise> or contact our technical team.

#### **Terms and conditions**

---

- Guarantee only valid for products bought direct from Abcam or one of our authorized distributors