




Anti-CSRP2/Dlp1 antibody ab65946

★★★★★ [1 Abreviews](#) [1 References](#) [1 图像](#)

概述

产品名称	Anti-CSRP2/Dlp1抗体
描述	山羊多克隆抗体to CSRP2/Dlp1
宿主	Goat
经测试应用	适用于: WB, IHC-P
种属反应性	与反应: Mouse, Rat, Human 预测可用于: Horse, Cow, Opossum 
免疫原	Synthetic peptide corresponding to Human CSRP2/Dlp1 aa 86-97 (internal sequence). Sequence: C-ERLGIKPESVQP <div>  Run BLAST with  Run BLAST with </div>
阳性对照	Recombinant Human CSRP2/Dlp1 protein (ab126663) can be used as a positive control in WB. Human heart and kidney lysates. Mouse and rat kidney lysates.
常规说明	<p>The Life Science industry has been in the grips of a reproducibility crisis for a number of years. Abcam is leading the way in addressing this with our range of recombinant monoclonal antibodies and knockout edited cell lines for gold-standard validation. Please check that this product meets your needs before purchasing.</p> <p>If you have any questions, special requirements or concerns, please send us an inquiry and/or contact our Support team ahead of purchase. Recommended alternatives for this product can be found below, along with publications, customer reviews and Q&As</p>

性能

形式	Liquid
存放说明	Shipped at 4°C. Upon delivery aliquot and store at -20°C. Avoid freeze / thaw cycles.
存储溶液	pH: 7.30 Preservative: 0.02% Sodium azide Constituents: Tris buffered saline, 0.5% BSA
纯度	Immunogen affinity purified
纯化说明	ab65946 was purified from goat serum by ammonium sulphate precipitation followed by antigen affinity chromatography using the immunizing peptide.

克隆 多克隆
同种型 IgG

应用

The Abpromise guarantee **Abpromise™**承诺保证使用ab65946于以下的经测试应用

“应用说明”部分 下显示的仅为推荐的起始稀释度;实际最佳的稀释度/浓度应由使用者检定。

应用	Ab评论	说明
WB	★★★★★ (1)	Use a concentration of 0.1 - 0.3 µg/ml. Detects a band of approximately 26 kDa (predicted molecular weight: 21 kDa). A 1 hour primary incubation is recommended for this product. Approx 26kDa band observed in Human Heart and Kidney lysates and in Mouse and Rat Kidney lysates (calculated MW of 21.0kDa according to NP_001312.1). The observed molecular weight corresponds to earlier findings in literature with different
IHC-P		Use a concentration of 3 - 6 µg/ml.

靶标

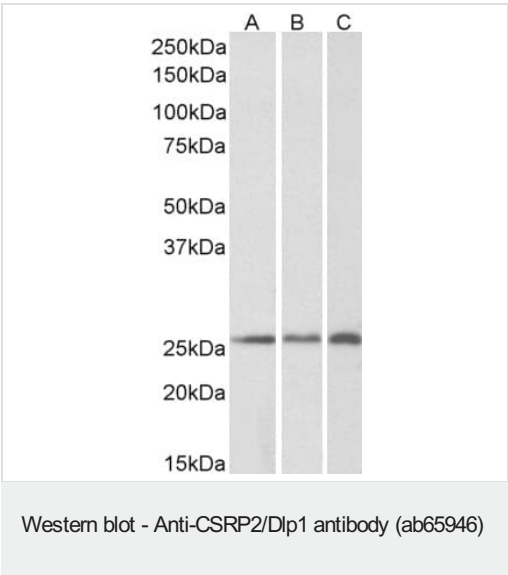
功能 Drastically down-regulated in response to PDGF-BB or cell injury, that promote smooth muscle cell proliferation and dedifferentiation. Seems to play a role in the development of the embryonic vascular system.

组织特异性 Highly expressed in the aorta, but not in heart and skeletal muscle.

序列相似性 Contains 2 LIM zinc-binding domains.

细胞定位 Nucleus.

图片



All lanes : Anti-CSR2/Dlp1 antibody (ab65946) at 0.2 µg/ml

Lane 1 : Human kidney lysate

Lane 2 : Mouse kidney lysate

Lane 3 : Rat kidney lysate

Lysates/proteins at 35 µg per lane.

Predicted band size: 21 kDa

Please note: All products are "FOR RESEARCH USE ONLY. NOT FOR USE IN DIAGNOSTIC PROCEDURES"

Our Abpromise to you: Quality guaranteed and expert technical support

- Replacement or refund for products not performing as stated on the datasheet
- Valid for 12 months from date of delivery
- Response to your inquiry within 24 hours

- We provide support in Chinese, English, French, German, Japanese and Spanish
- Extensive multi-media technical resources to help you
- We investigate all quality concerns to ensure our products perform to the highest standards

If the product does not perform as described on this datasheet, we will offer a refund or replacement. For full details of the Abpromise, please visit <https://www.abcam.cn/abpromise> or contact our technical team.

Terms and conditions

- Guarantee only valid for products bought direct from Abcam or one of our authorized distributors