

Anti-CSPS/STM antibody [EPR3720(2)] ab108401

重组 RabMAb

4 图像

概述

产品名称	Anti-CSPS/STM抗体[EPR3720(2)]
描述	兔单克隆抗体[EPR3720(2)] to CSPS/STM
宿主	Rabbit
经测试应用	适用于: WB, IHC-P, ICC/IF 不适用于: Flow Cyt
种属反应性	与反应: Human
免疫原	Synthetic peptide. This information is proprietary to Abcam and/or its suppliers.
阳性对照	WB: fetal liver and HepG2 cell lysates IHC-P: Human placenta tissue ICC/IF: HeLa cells
常规说明	<p>This product is a recombinant monoclonal antibody, which offers several advantages including:</p> <ul style="list-style-type: none">- High batch-to-batch consistency and reproducibility- Improved sensitivity and specificity- Long-term security of supply- Animal-free production <p>For more information see here.</p> <p>Our RabMAb[®] technology is a patented hybridoma-based technology for making rabbit monoclonal antibodies. For details on our patents, please refer to RabMAb[®] patents.</p> <p>Mouse, Rat: We have preliminary internal testing data to indicate this antibody may not react with these species. Please contact us for more information.</p>

性能

形式	Liquid
存放说明	Shipped at 4°C. Store at -20°C. Stable for 12 months at -20°C.
存储溶液	pH: 7.20 Preservative: 0.05% Sodium azide Constituents: 0.1% BSA, 40% Glycerol (glycerin, glycerine), 9.85% Tris glycine, 50% Tissue culture supernatant
纯度	Tissue culture supernatant
克隆	单克隆

克隆编号 EPR3720(2)

同种型 IgG

应用

The Abpromise guarantee **Abpromise™** 承诺保证使用 ab108401 于以下的经测试应用

“应用说明”部分 下显示的仅为推荐的起始稀释度；实际最佳的稀释度/浓度应由使用者检定。

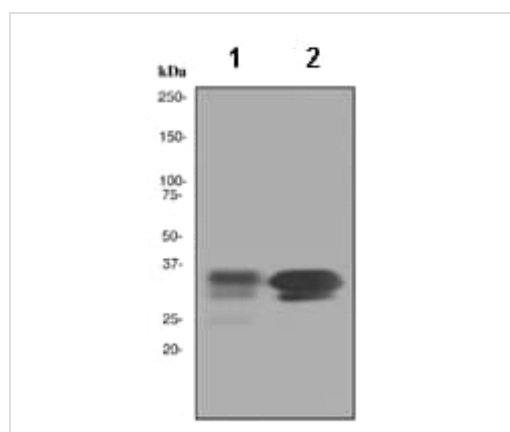
应用	Ab评论	说明
WB		1/1000 - 1/10000. Detects a band of approximately 35 kDa (predicted molecular weight: 34 kDa).
IHC-P		1/250 - 1/500. Perform heat mediated antigen retrieval with citrate buffer pH 6 before commencing with IHC staining protocol. Antigen retrieval is recommended.
ICC/IF		1/250 - 1/500.

应用说明 Is unsuitable for Flow Cyt.

靶标

相关性 Function: Catalyzes the sulfate conjugation of phenolic monoamines (neurotransmitters such as dopamine, norepinephrine and serotonin) and phenolic and catechol drugs. Tissue specificity: Liver, colon, kidney, lung, brain, spleen, small intestine, placenta and leukocyte. Similarity: Belongs to the sulfotransferase 1 family. PTM: The N-terminus is blocked.

图片



All lanes : Anti-CSPS/STM antibody [EPR3720(2)] (ab108401) at 1/1000 dilution

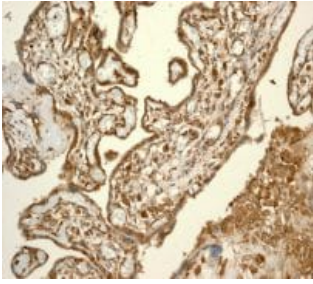
Lane 1 : fetal liver lysate

Lane 2 : HepG2 cell lysate

Lysates/proteins at 10 µg per lane.

Predicted band size: 34 kDa

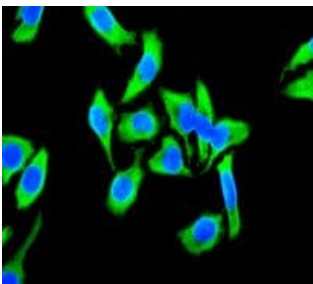
Western blot - Anti-CSPS/STM antibody
[EPR3720(2)] (ab108401)



Immunohistochemistry (Formalin/PFA-fixed paraffin-embedded sections) - Anti-CSPA/STM antibody [EPR3720(2)] (ab108401)

ab108401, at a 1/250 dilution, staining CSPA/STM in paraffin embedded Human placenta tissue by Immunohistochemistry.

Perform heat mediated antigen retrieval with citrate buffer pH 6 before commencing with IHC staining protocol.



Immunocytochemistry/ Immunofluorescence - Anti-CSPA/STM antibody [EPR3720(2)] (ab108401)

ab108401, at a 1/250 dilution, staining CSPA/STM in HeLa cells by Immunofluorescence.

Why choose a recombinant antibody?

 <p>Research with confidence Consistent and reproducible results</p>	 <p>Long-term and scalable supply Recombinant technology</p>
 <p>Success from the first experiment Confirmed specificity</p>	 <p>Ethical standards compliant Animal-free production</p>

Anti-CSPA/STM antibody [EPR3720(2)] (ab108401)

Please note: All products are "FOR RESEARCH USE ONLY. NOT FOR USE IN DIAGNOSTIC PROCEDURES"

Our Abpromise to you: Quality guaranteed and expert technical support

- Replacement or refund for products not performing as stated on the datasheet

- Valid for 12 months from date of delivery
- Response to your inquiry within 24 hours

- We provide support in Chinese, English, French, German, Japanese and Spanish
- Extensive multi-media technical resources to help you
- We investigate all quality concerns to ensure our products perform to the highest standards

If the product does not perform as described on this datasheet, we will offer a refund or replacement. For full details of the Abpromise, please visit <https://www.abcam.cn/abpromise> or contact our technical team.

Terms and conditions

- Guarantee only valid for products bought direct from Abcam or one of our authorized distributors