

Anti-CSNK2A1 (phospho T360 + S362) antibody ab119410

★★★★★ [1 Abreviews](#) [3 References](#) [1 图像](#)

概述

产品名称	Anti-CSNK2A1 (phospho T360 + S362)抗体
描述	兔多克隆抗体to CSNK2A1 (phospho T360 + S362)
宿主	Rabbit
经测试应用	适用于: WB
种属反应性	与反应: Recombinant fragment
免疫原	Synthetic peptide corresponding to Human CSNK2A1 (phospho T360 + S362) conjugated to keyhole limpet haemocyanin. Database link: NP_001894.2
阳性对照	Recombinant proteins CSNK2A1 wt, CSNK2A1 T360A, CSNK2A1 S362A, CSNK2A1T360/S362A phoshorylated by ERK2
常规说明	<p>The Life Science industry has been in the grips of a reproducibility crisis for a number of years. Abcam is leading the way in addressing this with our range of recombinant monoclonal antibodies and knockout edited cell lines for gold-standard validation. Please check that this product meets your needs before purchasing.</p> <p>If you have any questions, special requirements or concerns, please send us an inquiry and/or contact our Support team ahead of purchase. Recommended alternatives for this product can be found below, along with publications, customer reviews and Q&As</p>

性能

形式	Liquid
存放说明	Shipped at 4°C. Store at -20°C. Stable for 12 months at -20°C.
存储溶液	pH: 7.40 Preservative: 0.02% Sodium azide Constituents: 49% PBS, 50% Glycerol, 0.88% Sodium chloride (without Mg ²⁺ and Ca ²⁺)
纯度	Immunogen affinity purified
纯化说明	ab119410 was purified by affinity-chromatography using epitope-specific phosphopeptide. The antibody against non-phosphopeptide was removed by chromatography using non-phosphopeptide corresponding to the phosphorylation site.

克隆 多克隆
同种型 IgG

应用

The Abpromise guarantee **Abpromise™** 承诺保证使用 ab119410 于以下的经测试应用

“应用说明”部分 下显示的仅为推荐的起始稀释度；实际最佳的稀释度/浓度应由使用者检定。

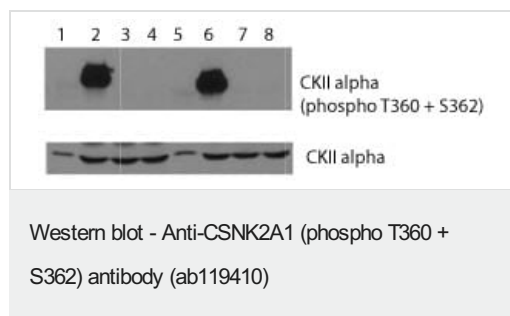
应用	Ab评论	说明
WB	★★★★★ (1)	1/1000. Detects a band of approximately 42 kDa (predicted molecular weight: 45 kDa).

靶标

功能 Casein kinases are operationally defined by their preferential utilization of acidic proteins such as caseins as substrates. The alpha and alpha' chains contain the catalytic site. Participates in Wnt signaling. CK2 phosphorylates 'Ser-392' of p53/TP53 following UV irradiation.

序列相似性 Belongs to the protein kinase superfamily. Ser/Thr protein kinase family. CK2 subfamily. Contains 1 protein kinase domain.

图片



All lanes : Anti-CSNK2A1 (phospho T360 + S362) antibody (ab119410) at 1/1000 dilution

- Lane 1 :** CSNK2A1
- Lane 2 :** CSNK2A1 + ERK2
- Lane 3 :** CSNK2A1 T360A
- Lane 4 :** CSNK2A1 T360A + ERK2
- Lane 5 :** CSNK2A1 S362A
- Lane 6 :** CSNK2A1 S362A + ERK2
- Lane 7 :** CSNK2A1 T360/S362A
- Lane 8 :** CSNK2A1 T360/S362A + ERK2

Predicted band size: 45 kDa

Lower panel stained with CSNK2A1 antibody as a loading control.

Please note: All products are "FOR RESEARCH USE ONLY. NOT FOR USE IN DIAGNOSTIC PROCEDURES"

Our Abpromise to you: Quality guaranteed and expert technical support

- Replacement or refund for products not performing as stated on the datasheet
- Valid for 12 months from date of delivery
- Response to your inquiry within 24 hours

- We provide support in Chinese, English, French, German, Japanese and Spanish
- Extensive multi-media technical resources to help you
- We investigate all quality concerns to ensure our products perform to the highest standards

If the product does not perform as described on this datasheet, we will offer a refund or replacement. For full details of the Abpromise, please visit <https://www.abcam.cn/abpromise> or contact our technical team.

Terms and conditions

- Guarantee only valid for products bought direct from Abcam or one of our authorized distributors