


Anti-CRY2 antibody ab93802

[1 References](#) [2 图像](#)

概述

产品名称	Anti-CRY2抗体
描述	兔多克隆抗体to CRY2
宿主	Rabbit
经测试应用	适用于: WB, IP
种属反应性	与反应: Human 预测可用于: Chimpanzee, Rhesus monkey, Gorilla, Orangutan 
免疫原	Synthetic peptide, corresponding to a region within amino acids 543-593 of Human CRY2 (AAH41814.1)
阳性对照	Whole cell lysate from HeLa and 293T cells
常规说明	<p>The Life Science industry has been in the grips of a reproducibility crisis for a number of years. Abcam is leading the way in addressing this with our range of recombinant monoclonal antibodies and knockout edited cell lines for gold-standard validation. Please check that this product meets your needs before purchasing.</p> <p>If you have any questions, special requirements or concerns, please send us an inquiry and/or contact our Support team ahead of purchase. Recommended alternatives for this product can be found below, along with publications, customer reviews and Q&As</p>

性能

形式	Liquid
存放说明	Shipped at 4°C. Upon delivery aliquot and store at -20°C. Avoid freeze / thaw cycles.
存储溶液	<p>pH: 6.8</p> <p>Preservative: 0.09% Sodium azide</p> <p>Constituents: 0.1% BSA, Tris buffered saline</p>
纯度	Immunogen affinity purified
克隆	多克隆
同种型	IgG

应用

The Abpromise guarantee **Abpromise™**承诺保证使用ab93802于以下的经测试应用

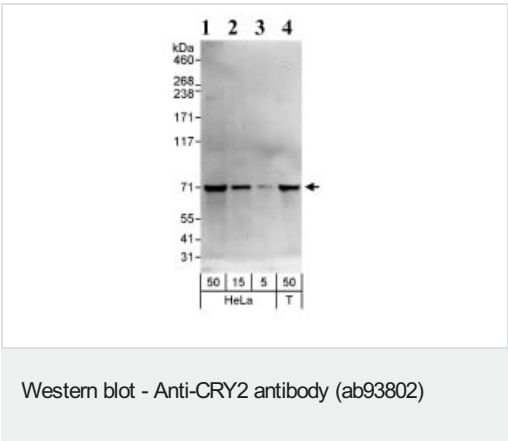
“应用说明”部分 下显示的仅为推荐的起始稀释度;实际最佳的稀释度/浓度应由使用者检定。

应用	Ab评论	说明
WB		1/2000 - 1/10000. Predicted molecular weight: 67 kDa.
IP		Use at 2-5 µg/mg of lysate.

靶标

功能	Blue light-dependent regulator of the circadian feedback loop. Inhibits CLOCK NPAS2-ARNTL E box-mediated transcription. Acts, in conjunction with CRY2, in maintaining period length and circadian rhythmicity. Has no photolyase activity. Capable of translocating circadian clock core proteins such as PER proteins to the nucleus. May inhibit CLOCK NPAS2-ARNTL transcriptional activity through stabilizing the unphosphorylated form of ARNTL.
组织特异性	Expressed in all tissues examined including fetal brain, fibroblasts, heart, brain, placenta, lung, liver, skeletal muscle, kidney, pancreas, spleen, thymus, prostate, testis, ovary, small intestine, colon and leukocytes. Highest levels in heart and skeletal muscle.
序列相似性	Belongs to the DNA photolyase class-1 family. Contains 1 DNA photolyase domain.
翻译后修饰	Phosphorylation on Ser-266 by MAPK is important for the inhibition of CLOCK-ARNTL-mediated transcriptional activity. Phosphorylation by CSKNE requires interaction with PER1 or PER2. Ubiquitinated by the SCF(FBXL3) and SCF(FBXL21) complex, leading to its degradation.
细胞定位	Cytoplasm. Nucleus. Translocated to the nucleus through interaction with other Clock proteins such as PER2 or ARNTL.

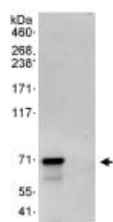
图片



All lanes : Anti-CRY2 antibody (ab93802) at 0.04 µg/ml

- Lane 1 :** whole HeLa cell lysate at 50 µg
- Lane 2 :** whole HeLa cell lysate at 15 µg
- Lane 3 :** whole HeLa cell lysate at 5 µg
- Lane 4 :** whole 293T cell lysate at 50 µg

Predicted band size: 67 kDa



Immunoprecipitation - Anti-CRY2 antibody (ab93802)

Immunoprecipitation analysis of CRY2 expression in whole HeLa cells lysate (1 mg for IP, 20% of IP loaded) using ab93802 at 3 ug/mg lysate (Left Lane). Right lane represent IP antibody control. Subsequent WB analysis was performed using 1ug/ml ab93802.

Please note: All products are "FOR RESEARCH USE ONLY. NOT FOR USE IN DIAGNOSTIC PROCEDURES"

Our Abpromise to you: Quality guaranteed and expert technical support

- Replacement or refund for products not performing as stated on the datasheet
- Valid for 12 months from date of delivery
- Response to your inquiry within 24 hours
- We provide support in Chinese, English, French, German, Japanese and Spanish
- Extensive multi-media technical resources to help you
- We investigate all quality concerns to ensure our products perform to the highest standards

If the product does not perform as described on this datasheet, we will offer a refund or replacement. For full details of the Abpromise, please visit <https://www.abcam.cn/abpromise> or contact our technical team.

Terms and conditions

- Guarantee only valid for products bought direct from Abcam or one of our authorized distributors