

Anti-CRTC3 antibody [EPR3440] ab91654

重组 RabMAb

★★★★★ **2 Abreviews** **11 References** **9 图像**

概述

产品名称	Anti-CRTC3抗体[EPR3440]
描述	兔单克隆抗体[EPR3440] to CRTC3
宿主	Rabbit
经测试应用	适用于: WB, IHC-P, ICC/IF 不适用于: IP
种属反应性	与反应: Mouse, Rat, Human
免疫原	Synthetic peptide within Human CRTC3. The exact sequence is proprietary.
阳性对照	WB: RAW 264.7, PC-12, HEK-293, HeLa, Jurkat, HEK-293T and NIH/3T3 whole cell lysates. IHC-P: Human tonsil tissue; mouse spleen tissue; rat spleen tissue. ICC/IF: Jurkat cells.
常规说明	This product is a recombinant monoclonal antibody, which offers several advantages including: <ul style="list-style-type: none"> - High batch-to-batch consistency and reproducibility - Improved sensitivity and specificity - Long-term security of supply - Animal-free production For more information see here . Our RabMAb [®] technology is a patented hybridoma-based technology for making rabbit monoclonal antibodies. For details on our patents, please refer to RabMAb[®] patents .

性能

形式	Liquid
存放说明	Shipped at 4°C. Store at +4°C short term (1-2 weeks). Upon delivery aliquot. Store at -20°C. Avoid freeze / thaw cycle.
存储溶液	pH: 7.20 Preservative: 0.01% Sodium azide Constituents: 59% PBS, 40% Glycerol (glycerin, glycerine), 0.05% BSA
纯度	Protein A purified
克隆	单克隆
克隆编号	EPR3440

应用

The Abpromise guarantee **Abpromise™**承诺保证使用ab91654于以下的经测试应用

“应用说明”部分下显示的仅为推荐的起始稀释度;实际最佳的稀释度/浓度应由使用者检定。

应用	Ab评论	说明
WB	★★★★★ (1)	1/20000. Predicted molecular weight: 67 kDa. For unpurified, use 1/1000 - 10000.
IHC-P		1/100 - 1/250. Perform heat mediated antigen retrieval with Tris/EDTA buffer pH 9.0 before commencing with IHC staining protocol.
ICC/IF		Use at an assay dependent concentration.

应用说明

Is unsuitable for IP.

靶标

功能

Transcriptional coactivator for CREB1 which activates transcription through both consensus and variant cAMP response element (CRE) sites. Acts as a coactivator, in the SIK/TORC signaling pathway, being active when dephosphorylated and acts independently of CREB1 'Ser-133' phosphorylation. Enhances the interaction of CREB1 with TAF4. Regulates the expression of specific CREB-activated genes such as the steroidogenic gene, StAR. Potent coactivator of PPARGC1A and inducer of mitochondrial biogenesis in muscle cells. Also coactivator for TAX activation of the human T-cell leukemia virus type 1 (HTLV-1) long terminal repeats (LTR).

组织特异性

Predominantly expressed in B and T lymphocytes. Highest levels in lung. Also expressed in brain, colon, heart, kidney, ovary, and prostate. Weak expression in liver, pancreas, muscle, small intestine, spleen and stomach.

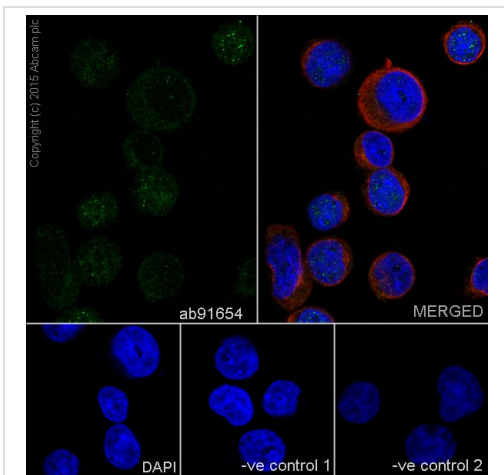
序列相似性

Belongs to the TORC family.

细胞定位

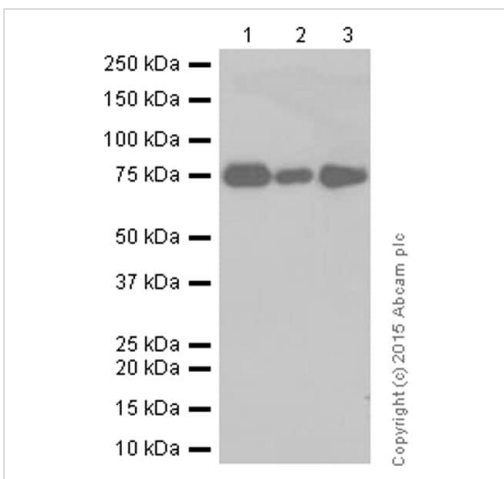
Nucleus. Cytoplasm. Appears to be mainly nuclear.

图片



Immunocytochemistry/ Immunofluorescence - Anti-CRTC3 antibody [EPR3440] (ab91654)

Immunofluorescence staining of Jurkat cells with purified ab91654 at a working dilution of 1/100, counter-stained with DAPI. The secondary antibody was Alexa Fluor® 488 goat anti-rabbit (**ab150077**), used at a dilution of 1/1000. **ab7291**, a mouse anti-tubulin antibody (1/1000), was used to stain tubulin along with **ab150120** (Alexa Fluor® 594 goat anti-mouse, 1/1000), shown in the top right hand panel. The cells were fixed in 4% PFA and permeabilized using 0.1% Triton X 100. The negative controls are shown in bottom middle and right hand panels - for negative control 1, purified ab91654 was used at a dilution of 1/500 followed by an Alexa Fluor® 594 goat anti-mouse antibody (**ab150120**) at a dilution of 1/500. For negative control 2, **ab7291** (mouse anti-tubulin) was used at a dilution of 1/500 followed by an Alexa Fluor® 488 goat anti-rabbit antibody (**ab150077**) at a dilution of 1/400.



Western blot - Anti-CRTC3 antibody [EPR3440] (ab91654)

All lanes : Anti-CRTC3 antibody [EPR3440] (ab91654) at 1/20000 dilution (purified)

Lane 1 : Raw 264.7 whole cell lysate

Lane 2 : PC-12 whole cell lysate

Lane 3 : NIH/3T3 whole cell lysate

Lysates/proteins at 20 µg per lane.

Secondary

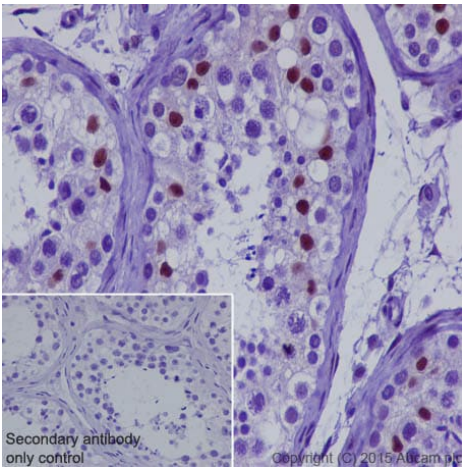
All lanes : Goat Anti-Rabbit IgG H&L (HRP) (**ab97051**) at 1/20000 dilution

Predicted band size: 67 kDa

Observed band size: 76 kDa

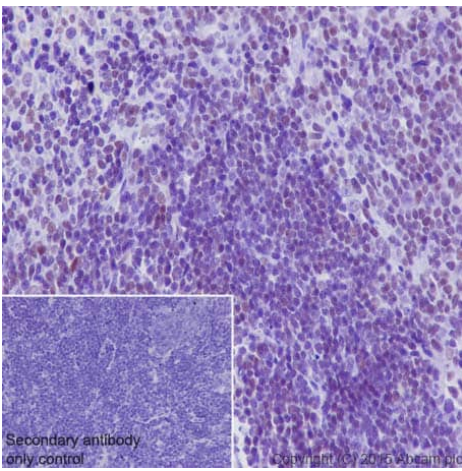
Blocking buffer: 5% NFDm/TBST

Dilution buffer: 5% NFDm/TBST



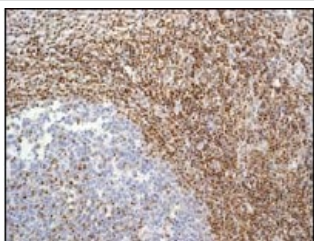
Immunohistochemical staining of paraffin embedded mouse spleen with purified ab91654 at a working dilution of 1/250. The secondary antibody used is **ab97051**, a goat anti-rabbit IgG (H&L) at a dilution of 1/500. The sample is counter-stained with hematoxylin. Antigen retrieval was performed using Tris-EDTA buffer, pH 9.0. PBS was used instead of the primary antibody as the negative control, and is shown in the inset.

Immunohistochemistry (Formalin/PFA-fixed paraffin-embedded sections) - Anti-CRTC3 antibody [EPR3440] (ab91654)



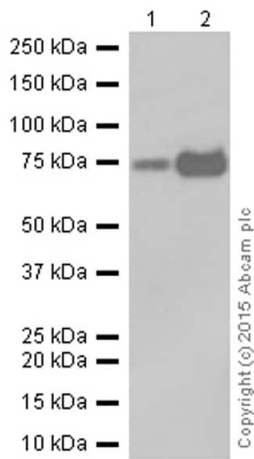
Immunohistochemical staining of paraffin embedded rat spleen with purified ab91654 at a working dilution of 1/250. The secondary antibody used is **ab97051**, a goat anti-rabbit IgG (H&L) at a dilution of 1/500. The sample is counter-stained with hematoxylin. Antigen retrieval was performed using Tris-EDTA buffer, pH 9.0. PBS was used instead of the primary antibody as the negative control, and is shown in the inset.

Immunohistochemistry (Formalin/PFA-fixed paraffin-embedded sections) - Anti-CRTC3 antibody [EPR3440] (ab91654)



Unpurified ab91654 at 1/100 dilution staining CRTC3 in Human tonsil by immunohistochemistry (paraffin-embedded section).

Immunohistochemistry (Formalin/PFA-fixed paraffin-embedded sections) - Anti-CRTC3 antibody [EPR3440] (ab91654)



Western blot - Anti-CRTC3 antibody [EPR3440]
(ab91654)

All lanes : Anti-CRTC3 antibody [EPR3440] (ab91654) at 1/20000 dilution (purified)

Lane 1 : HEK293 whole cell lysate

Lane 2 : HeLa whole cell lysate

Lysates/proteins at 20 µg per lane.

Secondary

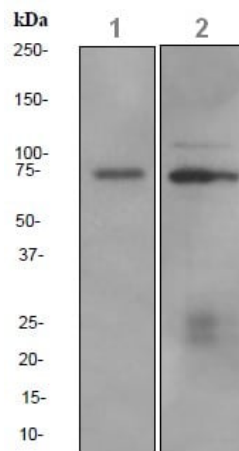
All lanes : Goat Anti-Rabbit IgG H&L (HRP) ([ab97051](#)) at 1/20000 dilution

Predicted band size: 67 kDa

Observed band size: 76 kDa

Blocking buffer: 5% NFDM/TBST

Dilution buffer: 5% NFDM/TBST



Western blot - Anti-CRTC3 antibody [EPR3440]
(ab91654)

All lanes : Anti-CRTC3 antibody [EPR3440] (ab91654) at 1/1000 dilution

Lane 1 : 293T cell lysates

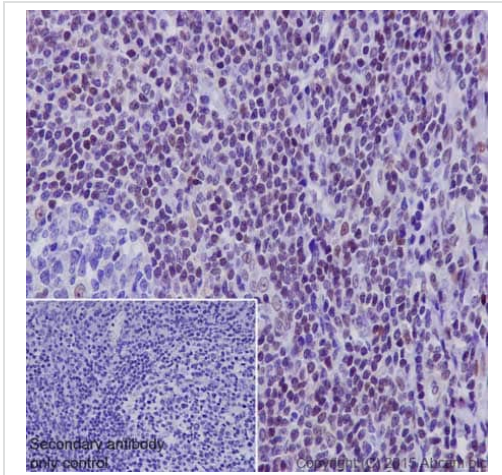
Lane 2 : Jurkat cell lysates

Lysates/proteins at 10 µg per lane.

Secondary

All lanes : HRP labelled goat anti-rabbit at 1/2000 dilution



Predicted band size: 67 kDa



Immunohistochemical staining of paraffin embedded human tonsil with purified ab91654 at a working dilution of 1/250. The secondary antibody used is **ab97051**, a goat anti-rabbit IgG (H&L) at a dilution of 1/500. The sample is counter-stained with hematoxylin. Antigen retrieval was performed using Tris-EDTA buffer, pH 9.0. PBS was used instead of the primary antibody as the negative control, and is shown in the inset.

Immunohistochemistry (Formalin/PFA-fixed paraffin-embedded sections) - Anti-CRTC3 antibody [EPR3440] (ab91654)

Why choose a recombinant antibody?

 <p>Research with confidence Consistent and reproducible results</p>	 <p>Long-term and scalable supply Recombinant technology</p>
 <p>Success from the first experiment Confirmed specificity</p>	 <p>Ethical standards compliant Animal-free production</p>

Anti-CRTC3 antibody [EPR3440] (ab91654)

Please note: All products are "FOR RESEARCH USE ONLY. NOT FOR USE IN DIAGNOSTIC PROCEDURES"

Our Abpromise to you: Quality guaranteed and expert technical support

- Replacement or refund for products not performing as stated on the datasheet
- Valid for 12 months from date of delivery

- Response to your inquiry within 24 hours
- We provide support in Chinese, English, French, German, Japanese and Spanish
- Extensive multi-media technical resources to help you
- We investigate all quality concerns to ensure our products perform to the highest standards

If the product does not perform as described on this datasheet, we will offer a refund or replacement. For full details of the Abpromise, please visit <https://www.abcam.cn/abpromise> or contact our technical team.

Terms and conditions

- Guarantee only valid for products bought direct from Abcam or one of our authorized distributors