

Anti-CROP antibody ab79231

2 图像

概述

产品名称	Anti-CROP抗体
描述	兔多克隆抗体to CROP
宿主	Rabbit
经测试应用	适用于: WB, ICC/IF
种属反应性	与反应: Human 预测可用于: Mouse, Chicken, Cow, Orangutan 
免疫原	Synthetic peptide corresponding to Human CROP aa 1-100 (N terminal) conjugated to keyhole limpet haemocyanin. (Peptide available as ab87825)
阳性对照	This antibody gave a positive signal in the following whole cell lysates: HeLa; U2OS; Jurkat; HEK293; HepG2; Caco2.
常规说明	<p>The Life Science industry has been in the grips of a reproducibility crisis for a number of years. Abcam is leading the way in addressing this with our range of recombinant monoclonal antibodies and knockout edited cell lines for gold-standard validation. Please check that this product meets your needs before purchasing.</p> <p>If you have any questions, special requirements or concerns, please send us an inquiry and/or contact our Support team ahead of purchase. Recommended alternatives for this product can be found below, along with publications, customer reviews and Q&As</p>

性能

形式	Liquid
存放说明	Shipped at 4°C. Store at +4°C short term (1-2 weeks). Upon delivery aliquot. Store at -20°C or -80°C. Avoid freeze / thaw cycle.
存储溶液	pH: 7.40 Preservative: 0.02% Sodium azide Constituent: PBS
	Batches of this product that have a concentration < 1mg/ml may have BSA added as a stabilising agent. If you would like information about the formulation of a specific lot, please contact our scientific support team who will be happy to help.

纯度	Immunogen affinity purified
克隆	多克隆
同种型	IgG

应用

The Abpromise guarantee **Abpromise™**承诺保证使用ab79231于以下的经测试应用

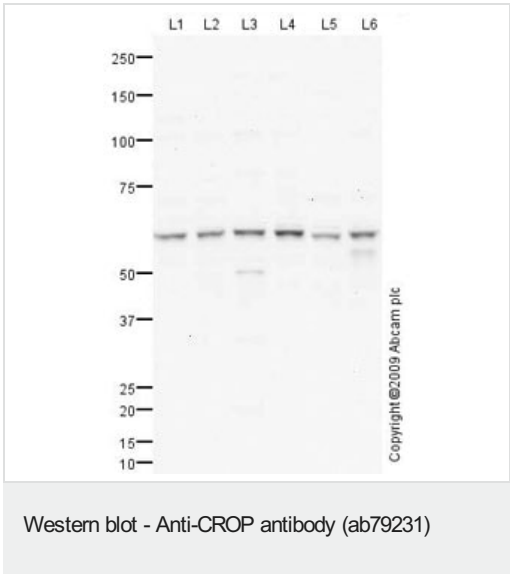
“应用说明”部分 下显示的仅为推荐的起始稀释度;实际最佳的稀释度/浓度应由使用者检定。

应用	Ab评论	说明
WB		Use a concentration of 1 µg/ml. Detects a band of approximately 60 kDa (predicted molecular weight: 51 kDa).
ICC/IF		Use a concentration of 1 µg/ml.

靶标

功能	Binds cAMP regulatory element DNA sequence. May play a role in RNA splicing.
组织特异性	Widely expressed. Highest levels in heart, brain, pancreas, thymus, ovary, small intestine and peripheral blood leukocytes, as well as cerebellum, putamen and pituitary gland. Lowest levels in lung, liver and kidney. Also expressed in fetal tissues, including brain, heart, kidney, thymus and lung.
序列相似性	Belongs to the Luc7 family.
翻译后修饰	Phosphorylated in vitro by SRPK1, SRPK2 and CLK1.
细胞定位	Nucleus speckle. The subnuclear localization is affected by cisplatin.

图片



All lanes : Anti-CROP antibody (ab79231) at 1 µg/ml

Lane 1 : HeLa (Human epithelial carcinoma cell line) Whole Cell Lysate

Lane 2 : U2OS (Human osteosarcoma cell line) Whole Cell Lysate

Lane 3 : Jurkat (Human T cell lymphoblast-like cell line) Whole Cell Lysate

Lane 4 : HEK293 (Human embryonic kidney cell line) Whole Cell Lysate

Lane 5 : HepG2 (Human hepatocellular liver carcinoma cell line) Whole Cell Lysate

Lane 6 : Caco 2 (Human colonic carcinoma cell line) Whole Cell Lysate

Lysates/proteins at 10 µg per lane.

Secondary

All lanes : Goat polyclonal to Rabbit IgG - H&L - Pre-Adsorbed (HRP) at 1/3000 dilution

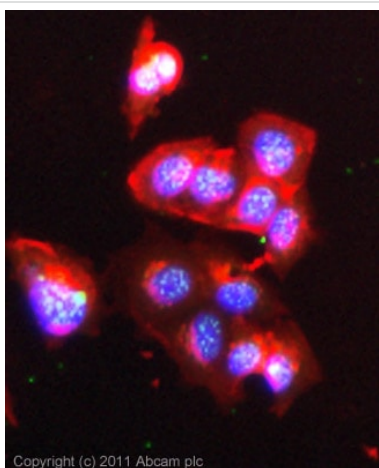
Developed using the ECL technique.

Performed under reducing conditions.

Predicted band size: 51 kDa

Observed band size: 60 kDa

The 60 kDa band observed is comparable to the molecular weight seen with other commercially available antibodies to CROP.



Immunocytochemistry/ Immunofluorescence - Anti-CROP antibody (ab79231)

ICC/IF image of ab79231 stained MCF7 cells. The cells were 100% methanol fixed (5 min) and then incubated in 1%BSA / 10% normal goat serum / 0.3M glycine in 0.1% PBS-Tween for 1h to permeabilise the cells and block non-specific protein-protein interactions. The cells were then incubated with the antibody (ab79231, 1µg/ml) overnight at +4°C. The secondary antibody (green) was [ab96899](#) Dylight 488 goat anti-rabbit IgG (H+L) used at a 1/250 dilution for 1h. Alexa Fluor® 594 WGA was used to label plasma membranes (red) at a 1/200 dilution for 1h. DAPI was used to stain the cell nuclei (blue) at a concentration of 1.43µM.

Please note: All products are "FOR RESEARCH USE ONLY. NOT FOR USE IN DIAGNOSTIC PROCEDURES"

Our Abpromise to you: Quality guaranteed and expert technical support

- Replacement or refund for products not performing as stated on the datasheet
- Valid for 12 months from date of delivery
- Response to your inquiry within 24 hours
- We provide support in Chinese, English, French, German, Japanese and Spanish
- Extensive multi-media technical resources to help you
- We investigate all quality concerns to ensure our products perform to the highest standards

If the product does not perform as described on this datasheet, we will offer a refund or replacement. For full details of the Abpromise, please visit <https://www.abcam.cn/abpromise> or contact our technical team.

Terms and conditions

- Guarantee only valid for products bought direct from Abcam or one of our authorized distributors