

# Anti-CRMP3 antibody ab36217

**2 References**   **2 图像**

### 概述

产品名称	Anti-CRMP3抗体
描述	兔多克隆抗体to CRMP3
宿主	Rabbit
特异性	No cross reactivity was detected with CRMP1, CRMP2, CRMP4 or CRMP5.
经测试应用	适用于: WB, IHC-P
种属反应性	与反应: Human
免疫原	A 15 residue synthetic peptide derived from C-terminal domain of human CRMP3.
常规说明	<p>The Life Science industry has been in the grips of a reproducibility crisis for a number of years. Abcam is leading the way in addressing this with our range of recombinant monoclonal antibodies and knockout edited cell lines for gold-standard validation. Please check that this product meets your needs before purchasing.</p> <p>If you have any questions, special requirements or concerns, please send us an inquiry and/or contact our Support team ahead of purchase. Recommended alternatives for this product can be found below, along with publications, customer reviews and Q&amp;As</p>

### 性能

形式	Liquid
存放说明	Shipped at 4°C. Store at +4°C short term (1-2 weeks). Upon delivery aliquot. Store at -20°C long term. Avoid freeze / thaw cycle.
存储溶液	Constituent: Whole serum
纯度	Whole antiserum
克隆	多克隆
同种型	IgG

### 应用

**The Abpromise guarantee**      **Abpromise™** 承诺保证使用ab36217于以下的经测试应用

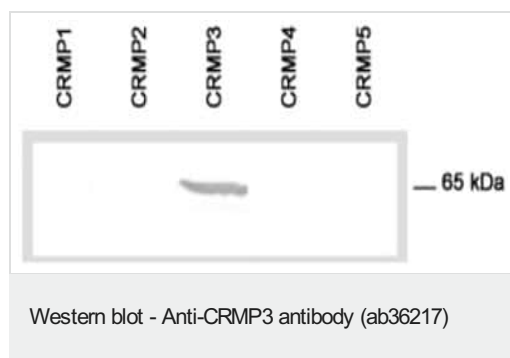
“应用说明”部分 下显示的仅为推荐的起始稀释度;实际最佳的稀释度/浓度应由使用者检定。

应用	Ab评论	说明
WB		1/2000. Predicted molecular weight: 65 kDa.
IHC-P		Use at an assay dependent concentration.

## 靶标

功能	Necessary for signaling by class 3 semaphorins and subsequent remodeling of the cytoskeleton. Plays a role in axon guidance, neuronal growth cone collapse and cell migration.
序列相似性	Belongs to the DHOase family. Hydantoinase/dihydropyrimidinase subfamily.
翻译后修饰	Phosphorylated upon DNA damage, probably by ATM or ATR.
细胞定位	Cytoplasm.

## 图片



**All lanes :** Anti-CRMP3 antibody (ab36217)

**Lane 1 :** E.coli transformed with cDNA of human CRMP1

**Lane 2 :** E.coli transformed with cDNA of human CRMP2

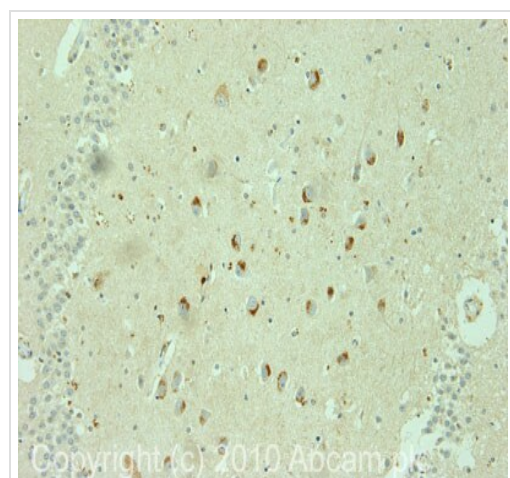
**Lane 3 :** E.coli transformed with cDNA of human CRMP3

**Lane 4 :** E.coli transformed with cDNA of human CRMP4

**Lane 5 :** E.coli transformed with cDNA of human CRMP5

**Predicted band size:** 65 kDa

**Observed band size:** 65 kDa



Immunohistochemistry (Formalin/PFA-fixed paraffin-embedded sections) - Anti-CRMP3 antibody (ab36217)

IHC image of ab36217 staining in human hippocampus formalin fixed paraffin embedded tissue section, performed on a Leica Bond™ system using the standard protocol F. The section was pre-treated using heat mediated antigen retrieval with sodium citrate buffer (pH6, epitope retrieval solution 1) for 20 mins. The section was then incubated with ab36217, 5µg/ml, for 15 mins at room temperature and detected using an HRP conjugated compact polymer system. DAB was used as the chromogen. The section was then counterstained with haematoxylin and mounted with DPX.

For other IHC staining systems (automated and non-automated) customers should optimize variable parameters such as antigen retrieval conditions, primary antibody concentration and antibody incubation times.

**Please note:** All products are "FOR RESEARCH USE ONLY. NOT FOR USE IN DIAGNOSTIC PROCEDURES"

### **Our Abpromise to you: Quality guaranteed and expert technical support**

---

- Replacement or refund for products not performing as stated on the datasheet
- Valid for 12 months from date of delivery
- Response to your inquiry within 24 hours
  
- We provide support in Chinese, English, French, German, Japanese and Spanish
- Extensive multi-media technical resources to help you
- We investigate all quality concerns to ensure our products perform to the highest standards

If the product does not perform as described on this datasheet, we will offer a refund or replacement. For full details of the Abpromise, please visit <https://www.abcam.cn/abpromise> or contact our technical team.

### **Terms and conditions**

---

- Guarantee only valid for products bought direct from Abcam or one of our authorized distributors