


Anti-CrkL (phospho Y207) antibody [EP270Y] ab52908

重组 RabMAb

6 References 2 图像

概述	
产品名称	Anti-CrkL (phospho Y207)抗体[EP270Y]
描述	兔单克隆抗体[EP270Y] to CrkL (phospho Y207)
宿主	Rabbit
经测试应用	适用于: WB 不适用于: Flow Cyt or IHC-P
种属反应性	与反应: Human 预测可用于: Mouse 
免疫原	Synthetic peptide. This information is proprietary to Abcam and/or its suppliers.
阳性对照	WB: K562 cell lysates
常规说明	<p>This product is a recombinant monoclonal antibody, which offers several advantages including:</p> <ul style="list-style-type: none">- High batch-to-batch consistency and reproducibility- Improved sensitivity and specificity- Long-term security of supply- Animal-free production <p>For more information see here.</p> <p>Our RabMAb[®] technology is a patented hybridoma-based technology for making rabbit monoclonal antibodies. For details on our patents, please refer to RabMAb[®] patents.</p> <p>Rat: We have preliminary internal testing data to indicate this antibody may not react with this species. Please contact us for more information.</p>
性能	
形式	Liquid
存放说明	Shipped at 4°C. Upon delivery aliquot and store at -20°C. Avoid freeze / thaw cycles.
存储溶液	pH: 7.20 Preservative: 0.01% Sodium azide Constituents: 59% PBS, 40% Glycerol (glycerin, glycerine), 0.5% BSA
纯度	Protein A purified
克隆	单克隆

克隆编号

EP270Y

同种型

IgG

应用

The Abpromise guarantee

Abpromise™承诺保证使用ab52908于以下的经测试应用

“应用说明”部分 下显示的仅为推荐的起始稀释度;实际最佳的稀释度/浓度应由使用者检定。

应用	Ab评论	说明
WB		1/50000. Detects a band of approximately 39 kDa (predicted molecular weight: 34 kDa).

应用说明

Is unsuitable for Flow Cyt or IHC-P.

靶标

功能

May mediate the transduction of intracellular signals.

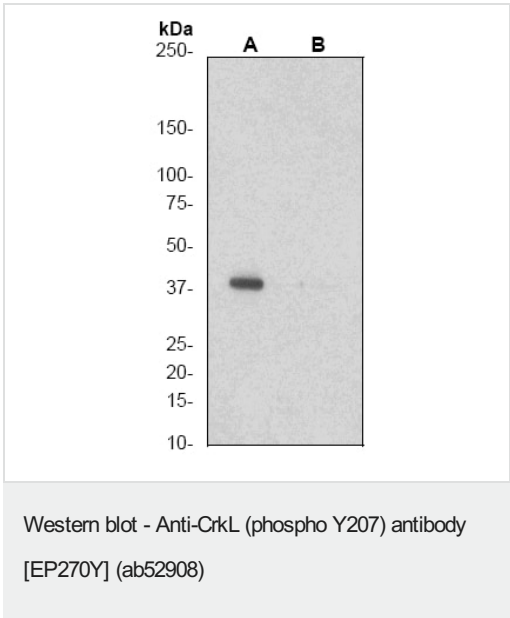
序列相似性

Belongs to the CRK family.

Contains 1 SH2 domain.

Contains 2 SH3 domains.

图片



All lanes : Anti-CrkL (phospho Y207) antibody [EP270Y] (ab52908) at 1/50000 dilution

Lane 1 : (A) K562 cell lysates untreated

Lane 2 : (B) K562 cell lysates treated with AP

Lysates/proteins at 10 µg per lane.

Predicted band size: 34 kDa

Observed band size: 37 kDa

Why choose a recombinant antibody?



Research with confidence
Consistent and reproducible results



Long-term and scalable supply
Recombinant technology



Success from the first experiment
Confirmed specificity



Ethical standards compliant
Animal-free production

Anti-CrkL (phospho Y207) antibody [EP270Y]
(ab52908)

Please note: All products are "FOR RESEARCH USE ONLY. NOT FOR USE IN DIAGNOSTIC PROCEDURES"

Our Abpromise to you: Quality guaranteed and expert technical support

- Replacement or refund for products not performing as stated on the datasheet
- Valid for 12 months from date of delivery
- Response to your inquiry within 24 hours
- We provide support in Chinese, English, French, German, Japanese and Spanish
- Extensive multi-media technical resources to help you
- We investigate all quality concerns to ensure our products perform to the highest standards

If the product does not perform as described on this datasheet, we will offer a refund or replacement. For full details of the Abpromise, please visit <https://www.abcam.cn/abpromise> or contact our technical team.

Terms and conditions

- Guarantee only valid for products bought direct from Abcam or one of our authorized distributors