

Anti-CrkL antibody [Y243] ab32126

敲除验证 重组 RabMAb

5 References 5 图像

概述	
产品名称	Anti-CrkL抗体[Y243]
描述	兔单克隆抗体[Y243] to CrkL
宿主	Rabbit
经测试应用	适用于: WB, IHC-P, ICC/IF 不适用于: Flow Cyt or IP
种属反应性	与反应: Human
免疫原	Synthetic peptide. This information is proprietary to Abcam and/or its suppliers.
阳性对照	HeLa and K562 cell lysates, and human breast carcinoma
常规说明	<p>This product is a recombinant monoclonal antibody, which offers several advantages including:</p> <ul style="list-style-type: none">- High batch-to-batch consistency and reproducibility- Improved sensitivity and specificity- Long-term security of supply- Animal-free production <p>For more information see here.</p> <p>Our RabMAb[®] technology is a patented hybridoma-based technology for making rabbit monoclonal antibodies. For details on our patents, please refer to RabMAb[®] patents.</p> <p>Mouse, Rat: We have preliminary internal testing data to indicate this antibody may not react with these species. Please contact us for more information.</p>
性能	
形式	Liquid
存放说明	Shipped at 4°C. Upon delivery aliquot and store at -20°C. Avoid freeze / thaw cycles.
存储溶液	pH: 7.20 Preservative: 0.01% Sodium azide Constituents: 49% PBS, 50% Glycerol (glycerin, glycerine), 0.05% BSA
纯度	Protein A purified
克隆	单克隆
克隆编号	Y243

同种型IgG

应用

The Abpromise guarantee Abpromise™承诺保证使用ab32126于以下的经测试应用

“应用说明”部分 下显示的仅为推荐的起始稀释度;实际最佳的稀释度/浓度应由使用者检定。

应用	Ab评论	说明
WB		1/1000. Detects a band of approximately 39 kDa (predicted molecular weight: 33 kDa).
IHC-P		1/50 - 1/100. Perform heat mediated antigen retrieval with citrate buffer pH 6 before commencing with IHC staining protocol.
ICC/IF		1/50 - 1/100.

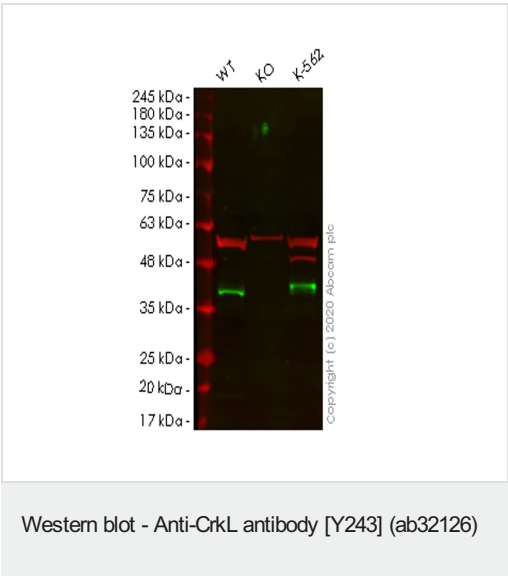
应用说明Is unsuitable for Flow Cyt or IP.

靶标

功能May mediate the transduction of intracellular signals.

序列相似性Belongs to the CRK family.
Contains 1 SH2 domain.
Contains 2 SH3 domains.

图片



All lanes : Anti-CrkL antibody [Y243] (ab32126) at 1/1000 dilution

- Lane 1 : Wild-type HeLa cell lysate
- Lane 2 : CRKL knockout HeLa cell lysate
- Lane 3 : K-562 cell lysate

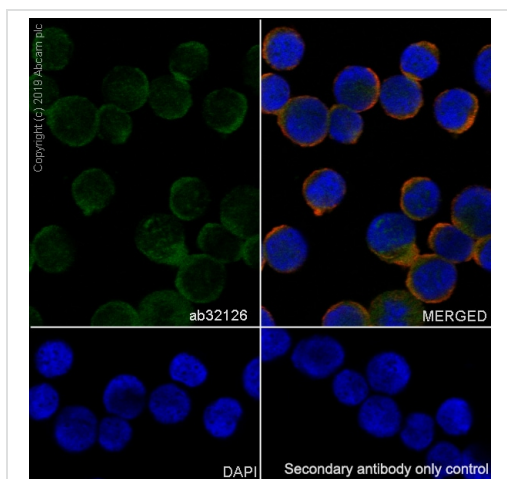
Lysates/proteins at 20 µg per lane.

Secondary
All lanes : Goat anti-Rabbit IgG H&L (IRDye® 800CW)
preadsorbed (ab216773) at 1/10000 dilution

Predicted band size: 33 kDa
Observed band size: 37 kDa

Lanes 1-3: Merged signal (red and green). Green - ab32126 observed at 37 kDa. Red - loading control **ab7291** observed at 50 kDa.

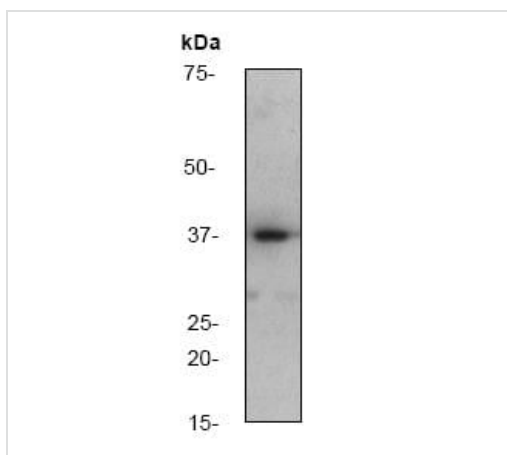
ab32126 Anti-CrkL antibody [Y243] was shown to specifically react with CrkL in wild-type HeLa cells. Loss of signal was observed when knockout cell line **ab265993** (knockout cell lysate **ab257397**) was used. Wild-type and CrkL knockout samples were subjected to SDS-PAGE. ab32126 and Anti-alpha Tubulin antibody [DM1A] - Loading Control (**ab7291**) were incubated overnight at 4°C at 1 in 1000 dilution and 1 in 20000 dilution respectively. Blots were developed with Goat anti-Rabbit IgG H&L (IRDye® 800CW) preadsorbed (**ab216773**) and Goat anti-Mouse IgG H&L (IRDye® 680RD) preadsorbed (**ab216776**) secondary antibodies at 1 in 20000 dilution for 1 hour at room temperature before imaging.



Immunocytochemistry/ Immunofluorescence - Anti-CrkL antibody [Y243] (ab32126)

Immunocytochemistry analysis of K-562 (human chronic myelogenous leukemia lymphoblast) labeling CrkL with purified ab32126 at 1/100 dilution (10 µg/ml). Cells were fixed with 100% methanol. Goat anti rabbit IgG (Alexa Fluor® 488, **ab150077**) at 1/1000 (2 µg/ml) was used as the secondary antibody. **ab195889** Anti-alpha Tubulin antibody [DM1A] - Microtubule Marker (Alexa Fluor® 594) 1/200 (2.6 µg/ml) was used as counterstain. Nuclei were stained blue with DAPI.

Negative control: PBS instead of the primary antibody.

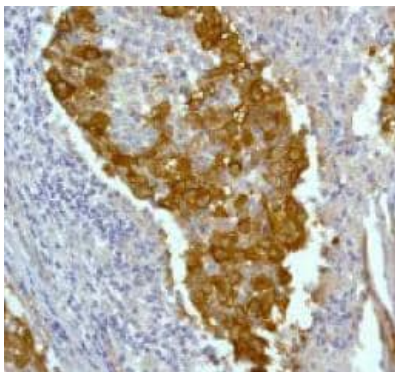


Western blot - Anti-CrkL antibody [Y243] (ab32126)

Anti-CrkL antibody [Y243] (ab32126) at 1/1000 dilution + K562 cell lysate

Predicted band size: 33 kDa

Observed band size: 39 kDa



ab32126, staining human breast carcinoma by immunohistochemistry, Paraffin embedded tissue

Perform heat mediated antigen retrieval with citrate buffer pH 6 before commencing with IHC staining protocol.

Immunohistochemistry (Formalin/PFA-fixed paraffin-embedded sections) - Anti-CrkL antibody [Y243] (ab32126)

Why choose a recombinant antibody?



Research with confidence
Consistent and reproducible results



Long-term and scalable supply
Recombinant technology



Success from the first experiment
Confirmed specificity



Ethical standards compliant
Animal-free production

Anti-CrkL antibody [Y243] (ab32126)

Please note: All products are "FOR RESEARCH USE ONLY. NOT FOR USE IN DIAGNOSTIC PROCEDURES"

Our Abpromise to you: Quality guaranteed and expert technical support

- Replacement or refund for products not performing as stated on the datasheet
- Valid for 12 months from date of delivery
- Response to your inquiry within 24 hours
- We provide support in Chinese, English, French, German, Japanese and Spanish
- Extensive multi-media technical resources to help you
- We investigate all quality concerns to ensure our products perform to the highest standards

If the product does not perform as described on this datasheet, we will offer a refund or replacement. For full details of the Abpromise, please visit <https://www.abcam.cn/abpromise> or contact our technical team.

Terms and conditions

- Guarantee only valid for products bought direct from Abcam or one of our authorized distributors