

Anti-Crk p38 antibody [EP242Y] ab45136

重组 RabMAb

★★★★★ 1 Abreviews 2 References 3 图像

概述

产品名称	Anti-Crk p38抗体[EP242Y]
描述	兔单克隆抗体[EP242Y] to Crk p38
宿主	Rabbit
经测试应用	适用于: WB, ICC/IF, Flow Cyt (Intra) 不适用于: Flow Cyt or IP
种属反应性	与反应: Mouse, Rat, Human
免疫原	Synthetic peptide. This information is proprietary to Abcam and/or its suppliers.
阳性对照	WB: K-562, C6, and NIH/3T3 whole cell lysates. ICC/IF: HepG2 cells. Flow Cyt (Intra): HeLa cells.
常规说明	<p>This product has switched from a hybridoma to recombinant production method on 9th June 2023.</p> <p>This product is a recombinant monoclonal antibody, which offers several advantages including:</p> <ul style="list-style-type: none"><li>- High batch-to-batch consistency and reproducibility</li><li>- Improved sensitivity and specificity</li><li>- Long-term security of supply</li><li>- Animal-free production</li></ul> <p>For more information <a href="#">see here</a>.</p> <p>Our RabMAb<sup>®</sup> technology is a patented hybridoma-based technology for making rabbit monoclonal antibodies. For details on our patents, please refer to <a href="#">RabMAb<sup>®</sup> patents</a>.</p>

性能

形式	Liquid
存放说明	Shipped at 4°C. Upon delivery aliquot and store at -20°C. Avoid freeze / thaw cycles.
存储溶液	pH: 7.20 Preservative: 0.01% Sodium azide Constituents: 0.05% BSA, 40% Glycerol (glycerin, glycerine), 59% PBS
纯度	Protein A purified
克隆	单克隆
克隆编号	EP242Y
同种型	IgG

应用

**The Abpromise guarantee**      **Abpromise™**承诺保证使用ab45136于以下的经测试应用

“应用说明”部分 下显示的仅为推荐的起始稀释度;实际最佳的稀释度/浓度应由使用者检定。

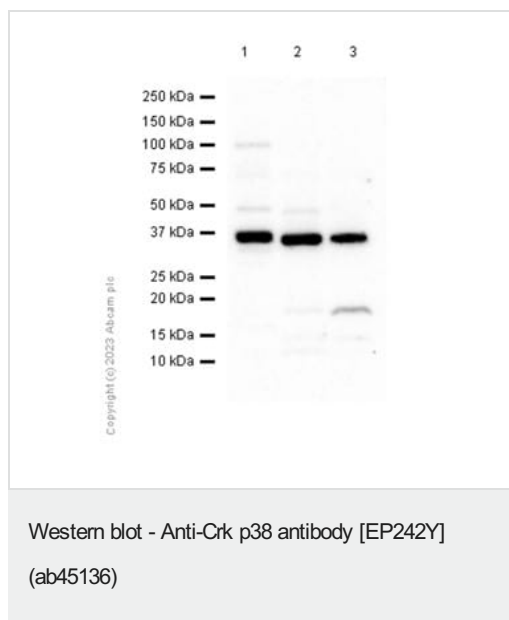
应用	Ab评论	说明
WB	★★★★★ (1)	1/1000. Detects a band of approximately 37 kDa (predicted molecular weight: 34 kDa).
ICC/IF		1/50.
Flow Cyt (Intra)		1/50.

应用说明      Is unsuitable for Flow Cyt or IP.

靶标

功能	The Crk-I and Crk-II forms differ in their biological activities. Crk-II has less transforming activity than Crk-I. Crk-II mediates attachment-induced MAPK8 activation, membrane ruffling and cell motility in a Rac-dependent manner. Involved in phagocytosis of apoptotic cells and cell motility via its interaction with DOCK1 and DOCK4.
序列相似性	Belongs to the CRK family. Contains 1 SH2 domain. Contains 2 SH3 domains.
结构域	The C-terminal SH3 domain function as a negative modulator for transformation and the N-terminal SH3 domain appears to function as a positive regulator for transformation. The SH2 domain mediates interaction with SHB.
翻译后修饰	Phosphorylation of Crk-II (40 kDa) gives rise to a 42 kDa form. Phosphorylated on Tyr-221 upon cell adhesion. Results in the negative regulation of the association with SH2- and SH3-binding partners, possibly by the formation of an intramolecular interaction of phosphorylated Tyr-221 with the SH2 domain. This leads finally to the down-regulation of the Crk signaling pathway.
细胞定位	Cytoplasm. Cell membrane. Translocated to the plasma membrane upon cell adhesion.

图片



**All lanes :** Anti-Crk p38 antibody [EP242Y] (ab45136) at 1/1000 dilution

**Lane 1 :** K-562 (Human chronic myelogenous leukemia lymphoblast) whole cell lysate

**Lane 2 :** C6 (Rat glial tumor glial cell) whole cell lysate

**Lane 3 :** NIH/3T3 (Mouse embryonic fibroblast) whole cell lysate

Lysates/proteins at 15 µg per lane.

#### Secondary

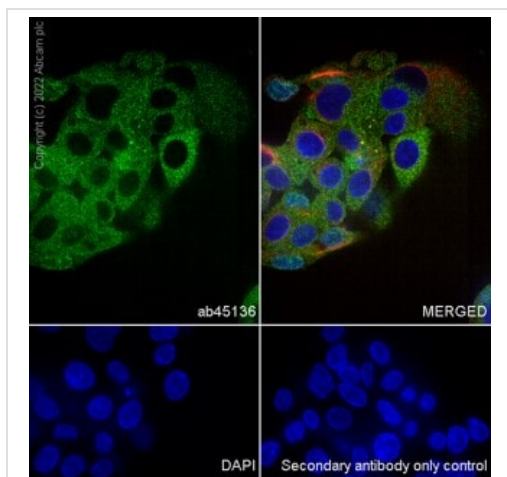
**All lanes :** Goat Anti-Rabbit IgG H&L (HRP) ([ab97051](#)) at 1/20000 dilution

**Predicted band size:** 34 kDa

**Observed band size:** 37 kDa

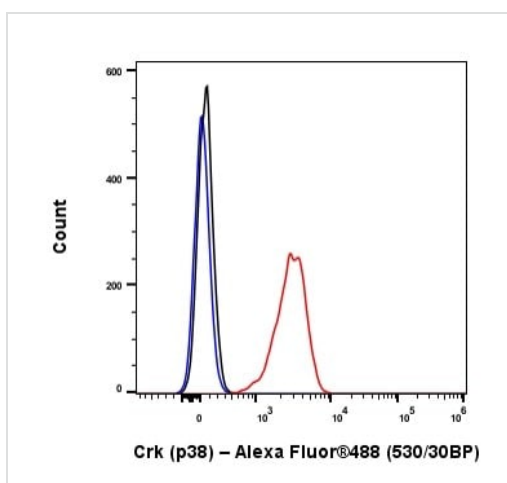
**Exposure time:** 40 seconds

Blocking and diluting buffer and concentration: 5% NFDM/TBST.



Immunocytochemistry/ Immunofluorescence - Anti-Crk p38 antibody [EP242Y] (ab45136)

Immunofluorescent analysis of 4% Paraformaldehyde-fixed, 0.1% TritonX-100 permeabilized HepG2 cells labelling Crk with ab45136 at 1/50 dilution. Confocal image showing cytoplasmic and membranous staining in subsets of HepG2 cells. **ab195889** AlexaFluor® 594-conjugated Anti-alpha Tubulin was used to counterstain tubulin at 1/200 dilution. The Nuclear counterstain was DAPI (Blue). Secondary antibody only control: Secondary antibody is **ab150081** Goat Anti-Rabbit IgG H&L (Alexa Fluor® 488) preadsorbed at 1/1000 dilution.



Flow Cytometry (Intracellular) - Anti-Crk p38 antibody [EP242Y] (ab45136)

Flow cytometric analysis of 4% paraformaldehyde fixed 90% methanol permeabilized HeLa cells labelling Crk with ab45136 at 1/50 dilution (Red) compared with an isotype control (Black) and an unlabelled control (Cell without incubation with primary antibody and secondary antibody (Blue)). A Goat Anti-Rabbit IgG (Alexa Fluor® 488, **ab150081**) was used as the secondary antibody.

**Please note:** All products are "FOR RESEARCH USE ONLY. NOT FOR USE IN DIAGNOSTIC PROCEDURES"

### Our Abpromise to you: Quality guaranteed and expert technical support

- Replacement or refund for products not performing as stated on the datasheet
- Valid for 12 months from date of delivery
- Response to your inquiry within 24 hours
- We provide support in Chinese, English, French, German, Japanese and Spanish
- Extensive multi-media technical resources to help you
- We investigate all quality concerns to ensure our products perform to the highest standards

If the product does not perform as described on this datasheet, we will offer a refund or replacement. For full details of the Abpromise, please visit <https://www.abcam.cn/abpromise> or contact our technical team.

## Terms and conditions

---

- Guarantee only valid for products bought direct from Abcam or one of our authorized distributors