

Anti-Cripto1/CRIPTO antibody [mAbcam60626] ab60626

1 图像

概述

产品名称	Anti-Cripto1/CRIPTO抗体[mAbcam60626]
描述	小鼠单克隆抗体[mAbcam60626] to Cripto1/CRIPTO
宿主	Mouse
经测试应用	适用于: WB
种属反应性	与反应: Recombinant fragment 预测可用于: Mouse, Cow, Human 
免疫原	Synthetic peptide corresponding to Human Cripto1/CRIPTO aa 100 to the C-terminus conjugated to keyhole limpet haemocyanin. (Peptide available as ab23310)
阳性对照	This antibody gave a positive signal in Cripto1/CRIPTO (Human) Recombinant Protein.
常规说明	<p>This antibody clone is manufactured by Abcam. If you require a custom buffer formulation or conjugation for your experiments, please contact orders@abcam.com.</p> <p>The Life Science industry has been in the grips of a reproducibility crisis for a number of years. Abcam is leading the way in addressing this with our range of recombinant monoclonal antibodies and knockout edited cell lines for gold-standard validation. Please check that this product meets your needs before purchasing.</p> <p>If you have any questions, special requirements or concerns, please send us an inquiry and/or contact our Support team ahead of purchase. Recommended alternatives for this product can be found below, along with publications, customer reviews and Q&As</p>

性能

形式	Liquid
存放说明	Shipped at 4°C. Store at +4°C short term (1-2 weeks). Upon delivery aliquot. Store at -20°C or -80°C. Avoid freeze / thaw cycle.
存储溶液	pH: 7.40 Preservative: 0.02% Sodium azide Constituents: 6.97% L-Arginine, PBS
纯度	Protein G purified
克隆	单克隆

克隆编号	mAbcam60626
骨髓瘤	Sp2/0-Ag14
同种型	IgG2a

应用

The Abpromise guarantee

Abpromise™承诺保证使用ab60626于以下的经测试应用
“应用说明”部分 下显示的仅为推荐的起始稀释度;实际最佳的稀释度/浓度应由使用者检定。

应用	Ab评论	说明
WB		

应用说明

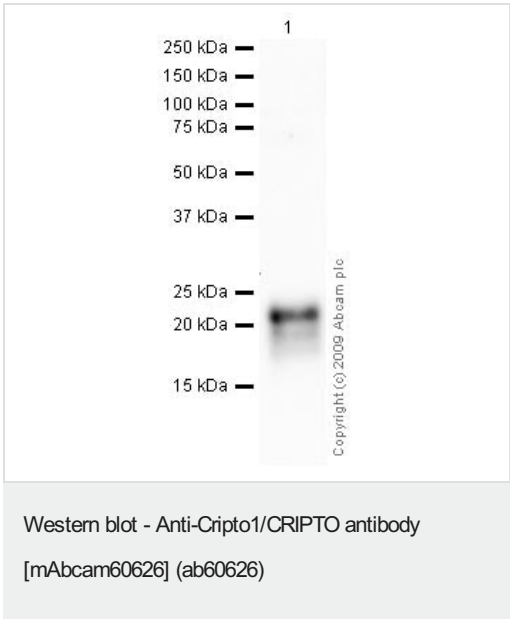
WB: Use at a concentration of 10 µg/ml. Detects a band of approximately 21 kDa using a Cripto1 Recombinant Protein (predicted molecular weight: 16-20 kDa).

Not yet tested in other applications.
Optimal dilutions/concentrations should be determined by the end user.

靶标

功能	Could play a role in the determination of the epiblastic cells that subsequently give rise to the mesoderm.
组织特异性	Preferentially expressed in gastric and colorectal carcinomas than in their normal counterparts.
序列相似性	Contains 1 EGF-like domain.
细胞定位	Cell membrane.

图片



Anti-Cripto1/CRIPTO antibody [mAbcam60626] (ab60626) at 10 µg/ml + Cripto1/CRIPTO Recombinant Protein at 0.1 µg

Secondary
 Goat polyclonal to Mouse IgG - H&L - Pre-Adsorbed (HRP) at 1/3000 dilution

Performed under reducing conditions.

Predicted band size: 16-20 kDa
Observed band size: 21 kDa

Please note: All products are "FOR RESEARCH USE ONLY. NOT FOR USE IN DIAGNOSTIC PROCEDURES"

Our Abpromise to you: Quality guaranteed and expert technical support

- Replacement or refund for products not performing as stated on the datasheet
- Valid for 12 months from date of delivery
- Response to your inquiry within 24 hours

- We provide support in Chinese, English, French, German, Japanese and Spanish
- Extensive multi-media technical resources to help you
- We investigate all quality concerns to ensure our products perform to the highest standards

If the product does not perform as described on this datasheet, we will offer a refund or replacement. For full details of the Abpromise, please visit <https://www.abcam.cn/abpromise> or contact our technical team.

Terms and conditions

- Guarantee only valid for products bought direct from Abcam or one of our authorized distributors