


Anti-CRHR2 antibody ab104368

★★★★★ [1 Abreviews](#) [4 References](#) [1 图像](#)

概述

产品名称	Anti-CRHR2抗体
描述	兔多克隆抗体to CRHR2
宿主	Rabbit
经测试应用	适用于: WB
种属反应性	与反应: Mouse, Rat 预测可用于: Horse, Hamster, Cow, Dog, Human 
免疫原	Synthetic peptide corresponding to Rat CRHR2 aa 50-150 conjugated to keyhole limpet haemocyanin. (Peptide available as ab125890)
阳性对照	This antibody gave a positive signal in the following tissue lysates: Rat Brain; Rat Forebrain; Rat Dorsal Root Ganglion; Mouse Dopaminergic Nucleus.
常规说明	<p>The Life Science industry has been in the grips of a reproducibility crisis for a number of years. Abcam is leading the way in addressing this with our range of recombinant monoclonal antibodies and knockout edited cell lines for gold-standard validation. Please check that this product meets your needs before purchasing.</p> <p>If you have any questions, special requirements or concerns, please send us an inquiry and/or contact our Support team ahead of purchase. Recommended alternatives for this product can be found below, along with publications, customer reviews and Q&As</p>

性能

形式	Liquid
存放说明	Shipped at 4°C. Store at +4°C short term (1-2 weeks). Upon delivery aliquot. Store at -20°C or -80°C. Avoid freeze / thaw cycle.
存储溶液	pH: 7.40 Preservative: 0.02% Sodium azide Constituents: 1% BSA, PBS

Batches of this product that have a concentration < 1mg/ml may have BSA added as a stabilising agent. If you would like information about the formulation of a specific lot, please contact our scientific support team who will be happy to help.

纯度	Immunogen affinity purified
克隆	多克隆
同种型	IgG

应用

The Abpromise guarantee **Abpromise™**承诺保证使用ab104368于以下的经测试应用

“应用说明”部分下显示的仅为推荐的起始稀释度;实际最佳的稀释度/浓度应由使用者检定。

应用	Ab评论	说明
WB	★★★★★ (1)	Use a concentration of 1 µg/ml. Detects a band of approximately 51,54 kDa (predicted molecular weight: 48 kDa).

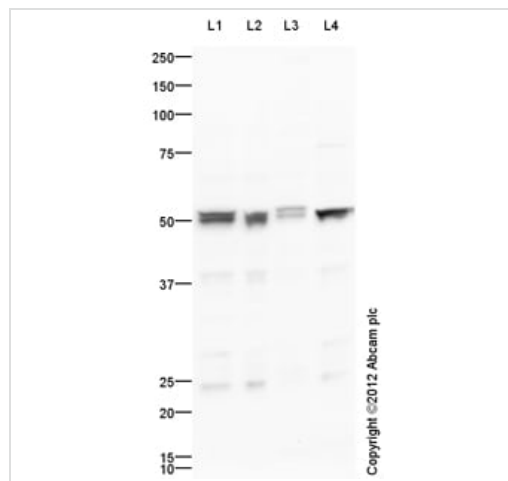
靶标

功能 This is a receptor for corticotropin releasing factor. Shows high-affinity CRF binding. Also binds to urocortin I, II and III. The activity of this receptor is mediated by G proteins which activate adenylyl cyclase.

序列相似性 Belongs to the G-protein coupled receptor 2 family.

细胞定位 Cell membrane.

图片



Western blot - Anti-CRHR2 antibody (ab104368)

All lanes : Anti-CRHR2 antibody (ab104368) at 1 µg/ml

Lane 1 : Brain (Rat) Tissue Lysate

Lane 2 : Rat Forebrain

Lane 3 : Dorsal Root Ganglia (Rat) Tissue Lysate

Lane 4 : Dopaminergic nucleus Mouse Tissue Lysate

Lysates/proteins at 10 µg per lane.

Secondary

All lanes : Goat Anti-Rabbit IgG H&L (HRP) preadsorbed (**ab97080**) at 1/5000 dilution

Developed using the ECL technique.

Performed under reducing conditions.

Predicted band size: 48 kDa

Observed band size: 51,54 kDa

Exposure time: 30 seconds

CRHR2 contains a number of potential glycosylation sites (SwissProt) which may explain its migration at a higher molecular weight than predicted. This antibody was raised against an immunogen that is predicted to recognize both alpha and beta isoforms of Corticotropin Releasing Factor Receptor 2. The predicted molecular weights of the alpha and beta isoforms are 48 kDa and 50 kDa respectively.

Please note: All products are "FOR RESEARCH USE ONLY. NOT FOR USE IN DIAGNOSTIC PROCEDURES"

Our Abpromise to you: Quality guaranteed and expert technical support

- Replacement or refund for products not performing as stated on the datasheet
- Valid for 12 months from date of delivery
- Response to your inquiry within 24 hours

- We provide support in Chinese, English, French, German, Japanese and Spanish
- Extensive multi-media technical resources to help you
- We investigate all quality concerns to ensure our products perform to the highest standards

If the product does not perform as described on this datasheet, we will offer a refund or replacement. For full details of the Abpromise, please visit <https://www.abcam.cn/abpromise> or contact our technical team.

Terms and conditions

- Guarantee only valid for products bought direct from Abcam or one of our authorized distributors