


Anti-CRF1/CRHR1 antibody ab77686

[5 References](#) [3 图像](#)

概述

产品名称	Anti-CRF1/CRHR1抗体
描述	山羊多克隆抗体to CRF1/CRHR1
宿主	Goat
经测试应用	适用于: WB, ICC/IF
种属反应性	与反应: Mouse, Rat, Human 预测可用于: Rhesus monkey 
免疫原	Synthetic peptide corresponding to Human CRF1/CRHR1 aa 107-117 (internal sequence). Sequence: C-NEEKKSKVHYH Database link: NP_004373.2

 [Run BLAST with](#)

 [Run BLAST with](#)

常规说明

The Life Science industry has been in the grips of a reproducibility crisis for a number of years. Abcam is leading the way in addressing this with our range of recombinant monoclonal antibodies and knockout edited cell lines for gold-standard validation. Please check that this product meets your needs before purchasing.

If you have any questions, special requirements or concerns, please send us an inquiry and/or contact our Support team ahead of purchase. Recommended alternatives for this product can be found below, along with publications, customer reviews and Q&As

性能

形式	Liquid
存放说明	Shipped at 4°C. Upon delivery aliquot and store at -20°C. Avoid repeated freeze / thaw cycles.
存储溶液	pH: 7.30 Preservative: 0.02% Sodium azide Constituents: 0.5% BSA, 99% Tris buffered saline
纯度	Immunogen affinity purified
纯化说明	ab77686 was purified from goat serum by ammonium sulphate precipitation followed by antigen affinity chromatography using the immunizing peptide.
克隆	多克隆

应用

The Abpromise guarantee **Abpromise™**承诺保证使用ab77686于以下的经测试应用

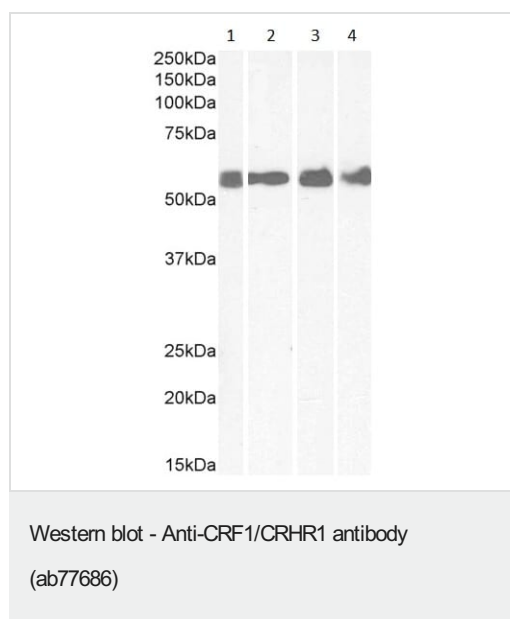
“应用说明”部分下显示的仅为推荐的起始稀释度;实际最佳的稀释度/浓度应由使用者检定。

应用	Ab评论	说明
WB		Use a concentration of 0.1 - 0.3 µg/ml. Detects a band of approximately 60 kDa (predicted molecular weight: 48 kDa). 1 hour primary incubation is recommended for this product.
ICC/IF		Use a concentration of 0.3 µg/ml.

靶标

功能	This is a receptor for corticotropin releasing factor. Shows high-affinity CRF binding. The activity of this receptor is mediated by G proteins which activate adenylyl cyclase.
组织特异性	Predominantly expressed in the cerebellum, pituitary, cerebral cortex and olfactory lobe.
序列相似性	Belongs to the G-protein coupled receptor 2 family.
翻译后修饰	C-terminal Ser or Thr residues may be phosphorylated.
细胞定位	Cell membrane.

图片



All lanes : Anti-CRF1/CRHR1 antibody (ab77686) at 1 µg/ml

Lane 1 : Human colon tissue lysate in RIPA buffer

Lane 2 : Human cerebellum tissue lysate in RIPA buffer

Lane 3 : Rat brain tissue lysate in RIPA buffer

Lane 4 : Mouse spinal cord tissue lysate in RIPA buffer

Lysates/proteins at 35 µg per lane.

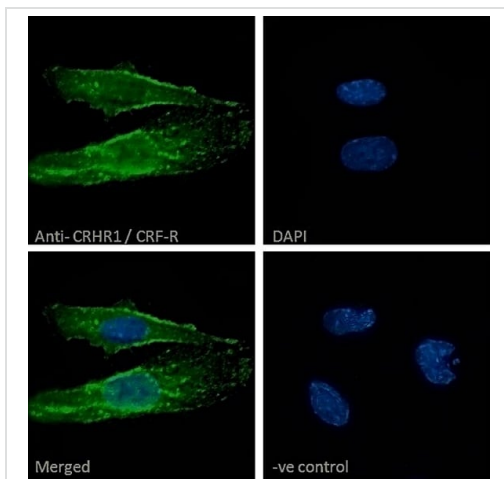
Predicted band size: 48 kDa

Incubated with the primary antibody for 1 hour. Detected by chemiluminescence.



Immunocytochemistry/ Immunofluorescence - Anti-CRF1/CRHR1 antibody (ab77686)

Immunocytochemistry/immunofluorescence analysis of MCF7 cells labelling CRF1 with ab77686 at 10µg/mL. Cells were fixed with 4% paraformaldehyde and permeabilized with 0.15% Triton X-100. Anti-goat Alexa Fluor® 488 antibody was used as the secondary antibody (green) showing cytoplasmic, and vesicle staining. Nuclear DNA was labelled with DAPI (blue). Negative control: Unimmunized goat IgG (10µg/mL) followed by Alexa Fluor® 488 secondary antibody (2µg/mL).



Immunocytochemistry/ Immunofluorescence - Anti-CRF1/CRHR1 antibody (ab77686)

Immunocytochemistry/immunofluorescence analysis of Neuro2a cells labelling CRF1 with ab77686 at 10µg/mL. Cells were fixed with 4% paraformaldehyde and permeabilized with 0.15% Triton X-100. Anti-goat Alexa Fluor® 488 antibody at 2ug/ml was used as the secondary antibody (green) showing plasma membrane, and vesicle staining. Nuclear DNA was labelled with DAPI (blue). Negative control: Unimmunized goat IgG (10ug/ml) followed by Alexa Fluor® 488 secondary antibody (2ug/ml).

Please note: All products are "FOR RESEARCH USE ONLY. NOT FOR USE IN DIAGNOSTIC PROCEDURES"

Our Abpromise to you: Quality guaranteed and expert technical support

- Replacement or refund for products not performing as stated on the datasheet
- Valid for 12 months from date of delivery
- Response to your inquiry within 24 hours
- We provide support in Chinese, English, French, German, Japanese and Spanish
- Extensive multi-media technical resources to help you
- We investigate all quality concerns to ensure our products perform to the highest standards

If the product does not perform as described on this datasheet, we will offer a refund or replacement. For full details of the Abpromise, please visit <https://www.abcam.cn/abpromise> or contact our technical team.

Terms and conditions

- Guarantee only valid for products bought direct from Abcam or one of our authorized distributors