



Anti-CREG1/CREG antibody ab233282

5 图像

概述

产品名称	Anti-CREG1/CREG抗体
描述	兔多克隆抗体to CREG1/CREG
宿主	Rabbit
经测试应用	适用于: IHC-P, WB
种属反应性	与反应: Mouse
免疫原	Recombinant fragment (His-T7-tag) corresponding to Mouse CREG1/CREG aa 50 to the C-terminus. Two N-terminal tags. Expressed in E.coli. Database link: O88668
	 Run BLAST with  Run BLAST with
阳性对照	WB: Recombinant mouse CREG1/CREG protein; Mouse lung and ear lysates. IHC-P: Mouse stomach and kidney tissue.
常规说明	<p>The Life Science industry has been in the grips of a reproducibility crisis for a number of years. Abcam is leading the way in addressing this with our range of recombinant monoclonal antibodies and knockout edited cell lines for gold-standard validation. Please check that this product meets your needs before purchasing.</p> <p>If you have any questions, special requirements or concerns, please send us an inquiry and/or contact our Support team ahead of purchase. Recommended alternatives for this product can be found below, along with publications, customer reviews and Q&As</p>

性能

形式	Liquid
存放说明	Shipped at 4°C. Store at +4°C short term (1-2 weeks). Upon delivery aliquot. Store at -20°C long term. Avoid freeze / thaw cycle.
存储溶液	pH: 7.40 Preservative: 0.02% Sodium azide Constituents: 44.12% PBS, 55.77% Glycerol (glycerin, glycerine)
纯度	Immunogen affinity purified
纯化说明	Antigen-specific affinity chromatography followed by Protein A affinity chromatography.
克隆	多克隆
同种型	IgG

应用

The Abpromise guarantee **Abpromise™**承诺保证使用ab233282于以下的经测试应用

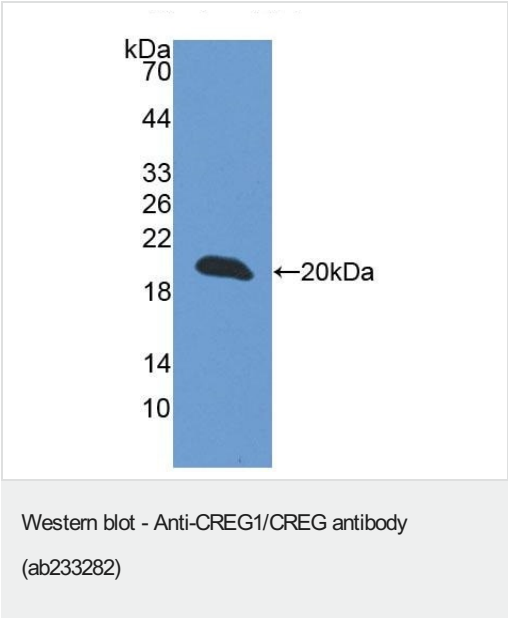
“应用说明”部分 下显示的仅为推荐的起始稀释度;实际最佳的稀释度/浓度应由使用者检定。

应用	Ab评论	说明
IHC-P		Use a concentration of 5 - 20 µg/ml.
WB		Use a concentration of 0.2 - 2 µg/ml. Predicted molecular weight: 24 kDa.

靶标

功能	May contribute to the transcriptional control of cell growth and differentiation. Antagonizes transcriptional activation and cellular transformation by the adenovirus E1A protein. The transcriptional control activity of cell growth requires interaction with IGF2R.
序列相似性	Belongs to the CREG family.
翻译后修饰	N-glycosylated.
细胞定位	Secreted.

图片



Anti-CREG1/CREG antibody (ab233282) at 2 µg/ml +
Recombinant mouse CREG1/CREG protein

Predicted band size: 24 kDa



Anti-CREG1/CREG antibody (ab233282) at 2 µg/ml + Mouse lung tissue lysate

Predicted band size: 24 kDa

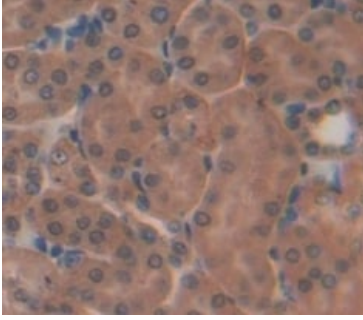
Western blot - Anti-CREG1/CREG antibody
(ab233282)



Anti-CREG1/CREG antibody (ab233282) at 1 µg + Mouse ear tissue lysate

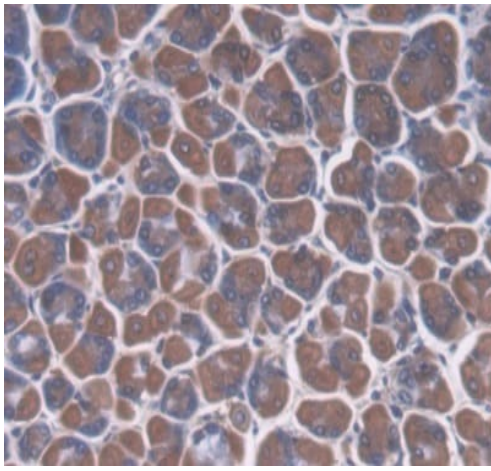
Predicted band size: 24 kDa

Western blot - Anti-CREG1/CREG antibody
(ab233282)



Formalin-fixed, paraffin-embedded mouse kidney tissue stained for CREG1/CREG using ab233282 at 20 µg/ml in immunohistochemical analysis. DAB staining.

Immunohistochemistry (Formalin/PFA-fixed paraffin-embedded sections) - Anti-CREG1/CREG antibody (ab233282)



Formalin-fixed, paraffin-embedded mouse stomach tissue stained for CREG1/CREG using ab233282 at 20 µg/ml in immunohistochemical analysis. DAB staining.

Immunohistochemistry (Formalin/PFA-fixed paraffin-embedded sections) - Anti-CREG1/CREG antibody (ab233282)

Please note: All products are "FOR RESEARCH USE ONLY. NOT FOR USE IN DIAGNOSTIC PROCEDURES"

Our Abpromise to you: Quality guaranteed and expert technical support

- Replacement or refund for products not performing as stated on the datasheet
- Valid for 12 months from date of delivery
- Response to your inquiry within 24 hours
- We provide support in Chinese, English, French, German, Japanese and Spanish
- Extensive multi-media technical resources to help you
- We investigate all quality concerns to ensure our products perform to the highest standards

If the product does not perform as described on this datasheet, we will offer a refund or replacement. For full details of the Abpromise, please visit <https://www.abcam.cn/abpromise> or contact our technical team.

Terms and conditions

- Guarantee only valid for products bought direct from Abcam or one of our authorized distributors