

Anti-Creatine Kinase MM antibody [3E5BA5] ab110319

2 图像

概述

产品名称	Anti-Creatine Kinase MM抗体[3E5BA5]
描述	小鼠单克隆抗体[3E5BA5] to Creatine Kinase MM
宿主	Mouse
经测试应用	适用于: WB 不适用于: IHC-P
种属反应性	与反应: Mouse, Human
免疫原	Full length protein. This information is proprietary to Abcam and/or its suppliers.
阳性对照	Human heart homogenate. WB: Mouse and Human skeletal muscle tissue lysates.
常规说明	<p>This antibody clone is manufactured by Abcam. If you require a custom buffer formulation or conjugation for your experiments, please contact orders@abcam.com.</p> <p>The Life Science industry has been in the grips of a reproducibility crisis for a number of years. Abcam is leading the way in addressing this with our range of recombinant monoclonal antibodies and knockout edited cell lines for gold-standard validation. Please check that this product meets your needs before purchasing.</p> <p>If you have any questions, special requirements or concerns, please send us an inquiry and/or contact our Support team ahead of purchase. Recommended alternatives for this product can be found below, along with publications, customer reviews and Q&As</p> <p>Product was previously marketed under the MitoSciences sub-brand.</p>

性能

形式	Liquid
存放说明	Shipped at 4°C. Store at +4°C short term (1-2 weeks). Store at -20°C or -80°C. Avoid freeze / thaw cycle.
存储溶液	pH: 7.5 Preservative: 0.02% Sodium azide Constituent: HEPES buffered saline
纯度	Affinity purified
纯化说明	ab110319 was produced in vitro using hybridomas grown in serum-free medium. Purity: >95% by SDS-PAGE.

克隆	单克隆
克隆编号	3E5BA5
同种型	IgG2a
轻链类型	kappa

应用

The Abpromise guarantee **Abpromise™** 承诺保证使用 ab110319 于以下的经测试应用

“应用说明”部分 下显示的仅为推荐的起始稀释度;实际最佳的稀释度/浓度应由使用者检定。

应用	Ab评论	说明
WB		Use a concentration of 1 µg/ml. Predicted molecular weight: 43 kDa.

应用说明 Is unsuitable for IHC-P.

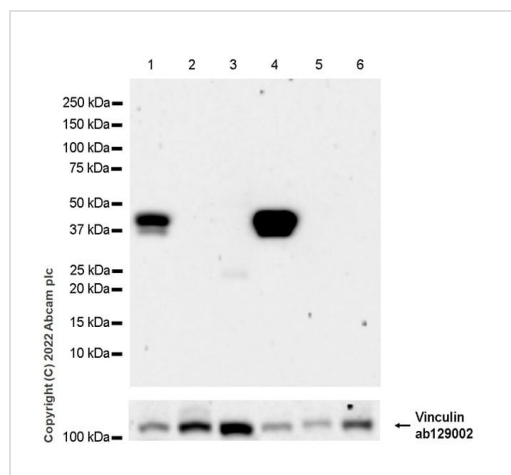
靶标

功能 Reversibly catalyzes the transfer of phosphate between ATP and various phosphagens (e.g. creatine phosphate). Creatine kinase isoenzymes play a central role in energy transduction in tissues with large, fluctuating energy demands, such as skeletal muscle, heart, brain and spermatozoa.

序列相似性 Belongs to the ATP:guanido phosphotransferase family.
Contains 1 phosphagen kinase C-terminal domain.
Contains 1 phosphagen kinase N-terminal domain.

细胞定位 Cytoplasm.

图片



Western blot - Anti-Creatine Kinase MM antibody
[3E5BA5] (ab110319)

All lanes : Anti-Creatine Kinase MM antibody [3E5BA5]
(ab110319) at 1/50 dilution

Lane 1 : Mouse skeletal muscle tissue lysate

Lane 2 : Mouse spleen tissue lysate

Lane 3 : Mouse placenta tissue lysate

Lane 4 : Human skeletal muscle tissue lysate

Lane 5 : Human spleen tissue lysate

Lane 6 : Human placenta tissue lysate

Lysates/proteins at 20 µg per lane.

Secondary

All lanes : Peroxidase-Conjugated Goat anti-Mouse IgG (H+L) at

1/10000 dilution

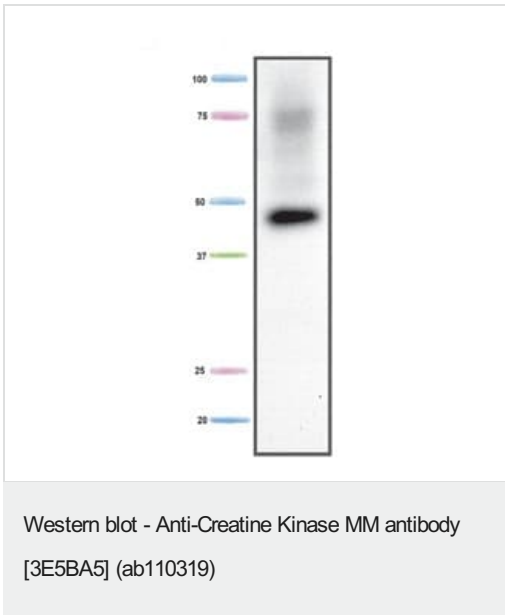
Predicted band size: 43 kDa

Observed band size: 43 kDa

Exposure time: 180 seconds

Blocking and diluting buffer and concentration: 5% NFDN/TBST.

ab129002 was used as a loading control.



Anti-Creatine Kinase MM antibody [3E5BA5] (ab110319) at 1 µg/ml + Human heart homogenate at 20 µg

Predicted band size: 43 kDa

Please note: All products are "FOR RESEARCH USE ONLY. NOT FOR USE IN DIAGNOSTIC PROCEDURES"

Our Abpromise to you: Quality guaranteed and expert technical support

- Replacement or refund for products not performing as stated on the datasheet
- Valid for 12 months from date of delivery
- Response to your inquiry within 24 hours
- We provide support in Chinese, English, French, German, Japanese and Spanish
- Extensive multi-media technical resources to help you
- We investigate all quality concerns to ensure our products perform to the highest standards

If the product does not perform as described on this datasheet, we will offer a refund or replacement. For full details of the Abpromise, please visit <https://www.abcam.cn/abpromise> or contact our technical team.

Terms and conditions

- Guarantee only valid for products bought direct from Abcam or one of our authorized distributors