

Anti-Creatine kinase B type antibody [EPR3926] ab108388

敲除验证
重组
RabMAb

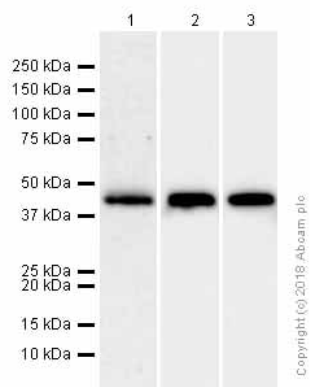
[7 References](#)
[6 图像](#)

概述

产品名称	Anti-Creatine kinase B type抗体[EPR3926]
描述	兔单克隆抗体[EPR3926] to Creatine kinase B type
宿主	Rabbit
特异性	The mouse and rat recommendation is based on the WB results. We do not guarantee IHC-P for mouse and rat.
经测试应用	适用于: WB, IHC-P
种属反应性	与反应: Mouse, Rat, Human
免疫原	Synthetic peptide. This information is proprietary to Abcam and/or its suppliers.
阳性对照	IHC-P: Human heart and cerebrum tissue. WB: 293T, SH SY5Y, Y79, HeLa cell lysates Mouse brain lysates and Rat brain lysates.
常规说明	<p>This product is a recombinant monoclonal antibody, which offers several advantages including:</p> <ul style="list-style-type: none"> - High batch-to-batch consistency and reproducibility - Improved sensitivity and specificity - Long-term security of supply - Animal-free production <p>For more information see here.</p> <p>Our RabMAb[®] technology is a patented hybridoma-based technology for making rabbit monoclonal antibodies. For details on our patents, please refer to RabMAb[®] patents.</p>

性能

形式	Liquid
存放说明	Shipped at 4°C. Store at +4°C short term (1-2 weeks). Upon delivery aliquot. Store at -20°C. Stable for 12 months at -20°C.
存储溶液	<p>pH: 7.20</p> <p>Preservative: 0.01% Sodium azide</p> <p>Constituents: 59% PBS, 40% Glycerol (glycerin, glycerine), 0.05% BSA</p>
纯度	Protein A purified
克隆	单克隆



Western blot - Anti-Creatine kinase B type antibody [EPR3926] (ab108388)

All lanes : Anti-Creatine kinase B type antibody [EPR3926] (ab108388) at 1/50000 dilution (Purified)

Lane 1 : HeLa (Human cervix adenocarcinoma epithelial cell) whole cell lysates

Lane 2 : Mouse brain lysates

Lane 3 : Rat brain lysates

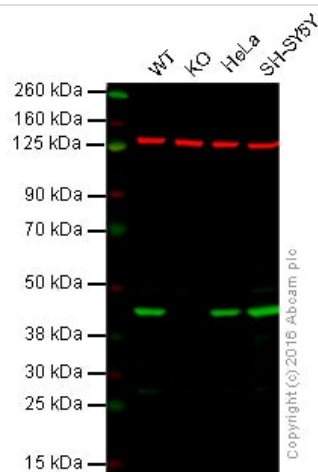
Lysates/proteins at 20 µg per lane.

Secondary

All lanes : Goat Anti-Rabbit IgG H&L (HRP) (ab97051) at 1/20000 dilution

Predicted band size: 43 kDa

Observed band size: 43 kDa



Western blot - Anti-Creatine kinase B type antibody [EPR3926] (ab108388)

Lane 1 : Wild-type HAP1 cell lysate (20 µg)

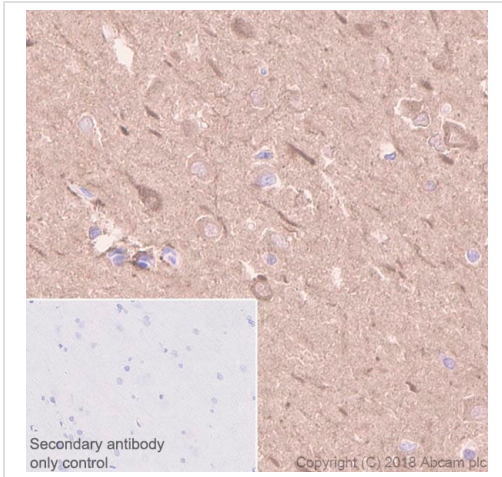
Lane 2 : Creatine kinase B knockout HAP1 cell lysate (20 µg)

Lane 3 : HeLa cell lysate (20 µg)

Lane 4 : SH-SY5Y cell lysate (20 µg)

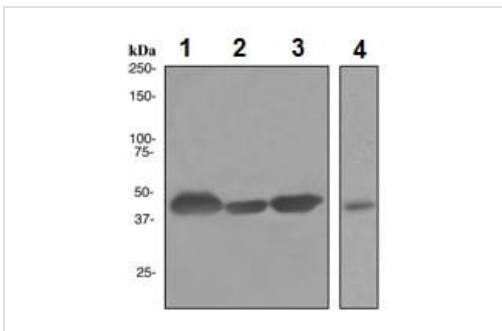
Lanes 1 - 4: Merged signal (red and green). Green - ab108388 observed at 45 kDa. Red - loading control, ab18058, observed at 124 kDa.

ab108388 was shown to specifically react with Creatine kinase B when Creatine kinase B knockout samples were used. Wild-type and Creatine kinase B knockout samples were subjected to SDS-PAGE. ab108388 and ab18058 (loading control to vinculin) were diluted 1/50000 and 1/10000 respectively and incubated overnight at 4°C. Blots were developed with Goat anti-Rabbit IgG H&L (IRDye® 800CW) preadsorbed (ab216773) and Goat anti-Mouse IgG H&L (IRDye® 680RD) preadsorbed (ab216776) secondary antibodies at 1/10000 dilution for 1 hour at room temperature before imaging.



Immunohistochemistry (Formalin/PFA-fixed paraffin-embedded sections) analysis of Human cerebrum tissue sections labeling Creatine kinase B type with purified ab108388 at 1/500 dilution (1.14 µg/ml). Perform heat mediated antigen retrieval using Citrate buffer, pH 6.0. ImmunoHistoProbe one step HRP Polymer (ready to use) was used as the secondary antibody. Negative control: PBS instead of the primary antibody. Hematoxylin was used as a counterstain.

Immunohistochemistry (Formalin/PFA-fixed paraffin-embedded sections) - Anti-Creatine kinase B type antibody [EPR3926] (ab108388)



All lanes : Anti-Creatine kinase B type antibody [EPR3926] (ab108388) at 1/50000 dilution

Lane 1 : 293T cell lysate

Lane 2 : SH SY5Y cell lysate

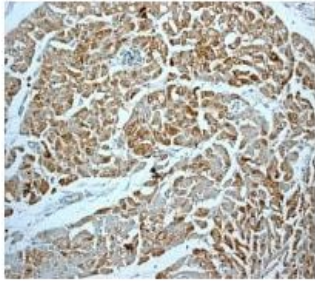
Lane 3 : Y79 cell lysate

Lane 4 : HeLa cell lysate

Western blot - Anti-Creatine kinase B type antibody [EPR3926] (ab108388)

Lysates/proteins at 10 µg per lane.

Predicted band size: 43 kDa



ab108388, at 1/100 dilution, staining Creatine Kinase BB in Human heart by Immunohistochemistry, Paraffin-embedded tissue.

Immunohistochemistry (Formalin/PFA-fixed paraffin-embedded sections) - Anti-Creatine kinase B type antibody [EPR3926] (ab108388)

Why choose a recombinant antibody?



Anti-Creatine kinase B type antibody [EPR3926] (ab108388)

Please note: All products are "FOR RESEARCH USE ONLY. NOT FOR USE IN DIAGNOSTIC PROCEDURES"

Our Abpromise to you: Quality guaranteed and expert technical support

- Replacement or refund for products not performing as stated on the datasheet
- Valid for 12 months from date of delivery
- Response to your inquiry within 24 hours
- We provide support in Chinese, English, French, German, Japanese and Spanish
- Extensive multi-media technical resources to help you
- We investigate all quality concerns to ensure our products perform to the highest standards

If the product does not perform as described on this datasheet, we will offer a refund or replacement. For full details of the Abpromise, please visit <https://www.abcam.cn/abpromise> or contact our technical team.

Terms and conditions

- Guarantee only valid for products bought direct from Abcam or one of our authorized distributors