




Anti-Creatine kinase B type antibody [CK-BYK/21E10] ab125114

敲除验证

4 References 1 图像

概述

产品名称	Anti-Creatine kinase B type抗体[CK-BYK/21E10]
描述	小鼠单克隆抗体[CK-BYK/21E10] to Creatine kinase B type
宿主	Mouse
经测试应用	适用于: WB
种属反应性	与反应: Mouse, Human 预测可用于: Rat, Rabbit, Cow, Dog 
免疫原	Synthetic peptide: SNSHNALKLRFPAEDEF , corresponding to N terminal amino acids 4-20 of Human Creatine kinase B type.  <a href="#">Run BLAST with</a>  <a href="#">Run BLAST with</a>
阳性对照	Human Purkinje cells.
常规说明	<p>The Life Science industry has been in the grips of a reproducibility crisis for a number of years. Abcam is leading the way in addressing this with our range of recombinant monoclonal antibodies and knockout edited cell lines for gold-standard validation. Please check that this product meets your needs before purchasing.</p> <p>If you have any questions, special requirements or concerns, please send us an inquiry and/or contact our Support team ahead of purchase. Recommended alternatives for this product can be found below, along with publications, customer reviews and Q&amp;As</p>

性能

形式	Liquid
存放说明	Shipped at 4°C. Upon delivery aliquot and store at -20°C. Avoid freeze / thaw cycles.
存储溶液	Preservative: 0.02% Sodium azide Constituents: 99% PBS, 0.1% BSA
纯度	Protein G purified
克隆	单克隆
克隆编号	CK-BYK/21E10

同种型IgG2b

应用

The Abpromise guarantee Abpromise™承诺保证使用ab125114于以下的经测试应用

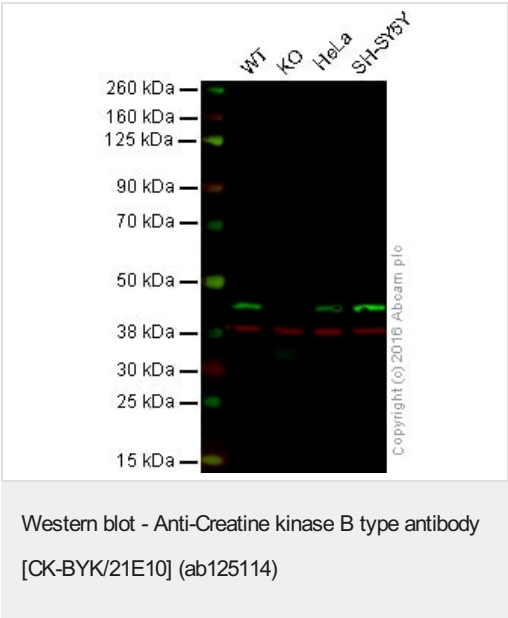
“应用说明”部分 下显示的仅为推荐的起始稀释度;实际最佳的稀释度/浓度应由使用者检定。

应用	Ab评论	说明
WB		1/50. Detects a band of approximately 43-46 kDa (predicted molecular weight: 43 kDa).

靶标

功能	Reversibly catalyzes the transfer of phosphate between ATP and various phosphagens (e.g. creatine phosphate). Creatine kinase isoenzymes play a central role in energy transduction in tissues with large, fluctuating energy demands, such as skeletal muscle, heart, brain and spermatozoa.
序列相似性	Belongs to the ATP:guanido phosphotransferase family. Contains 1 phosphagen kinase C-terminal domain. Contains 1 phosphagen kinase N-terminal domain.
细胞定位	Cytoplasm.

图片



**Lane 1:** Wild-type HAP1 cell lysate (20 µg)  
**Lane 2:** Creatine kinase B knockout HAP1 cell lysate (20 µg)  
**Lane 3:** HeLa cell lysate (20 µg)  
**Lane 4:** SH-SY5Y cell lysate (20 µg)  
**Lanes 1 - 4:** Merged signal (red and green). Green - ab125114 observed at 45 kDa. Red - loading control, [ab181602](#), observed at 37 kDa.

ab125114 was shown to recognize Creatine kinase B when Creatine kinase B knockout samples were used, along with additional cross-reactive bands. Wild-type and Creatine kinase B knockout samples were subjected to SDS-PAGE. ab125114 and [ab181602](#) (loading control to GAPDH) were diluted 1/50 and 1/10000 respectively and incubated overnight at 4°C. Blots were developed with Goat anti-Mouse IgG H&L (IRDye® 800CW) preadsorbed ([ab216772](#)) and Goat Anti-Rabbit IgG H&L (IRDye® 680RD) preadsorbed ([ab216777](#)) secondary antibodies at 1/10000 dilution for 1 hour at room temperature before imaging.

**Please note:** All products are "FOR RESEARCH USE ONLY. NOT FOR USE IN DIAGNOSTIC PROCEDURES"

### **Our Abpromise to you: Quality guaranteed and expert technical support**

---

- Replacement or refund for products not performing as stated on the datasheet
- Valid for 12 months from date of delivery
- Response to your inquiry within 24 hours
  
- We provide support in Chinese, English, French, German, Japanese and Spanish
- Extensive multi-media technical resources to help you
- We investigate all quality concerns to ensure our products perform to the highest standards

If the product does not perform as described on this datasheet, we will offer a refund or replacement. For full details of the Abpromise, please visit <https://www.abcam.cn/abpromise> or contact our technical team.

### **Terms and conditions**

---

- Guarantee only valid for products bought direct from Abcam or one of our authorized distributors