

Anti-CRABP2 antibody [EPR17376] ab211927

重组 RabMAb

★★★★★ **1 Abreviews** **4 References** **11 图像**

概述

产品名称	Anti-CRABP2抗体[EPR17376]
描述	兔单克隆抗体[EPR17376] to CRABP2
宿主	Rabbit
经测试应用	适用于: ICC/IF, IHC-P, WB, Flow Cyt (Intra)
种属反应性	与反应: Mouse, Rat, Human
免疫原	Recombinant full length protein. This information is proprietary to Abcam and/or its suppliers.
阳性对照	WB: Human, mouse and rat skin lysates; HT-29 and MCF7 whole cell lysates. IHC-P: Human oesophagus, skin and pancreatic ductal adenocarcinoma tissues; mouse and rat skin tissues. ICC/IF: MCF7 and HT-29 cells. Flow Cyt (intra): MCF7 cells.
常规说明	<p>This product is a recombinant monoclonal antibody, which offers several advantages including:</p> <ul style="list-style-type: none"> - High batch-to-batch consistency and reproducibility - Improved sensitivity and specificity - Long-term security of supply - Animal-free production <p>For more information see here.</p> <p>Our RabMAb[®] technology is a patented hybridoma-based technology for making rabbit monoclonal antibodies. For details on our patents, please refer to RabMAb[®] patents.</p>

性能

形式	Liquid
存放说明	Shipped at 4°C. Store at +4°C short term (1-2 weeks). Upon delivery aliquot. Store at -20°C long term. Avoid freeze / thaw cycle.
存储溶液	<p>pH: 7.2</p> <p>Preservative: 0.01% Sodium azide</p> <p>Constituents: 59% PBS, 40% Glycerol (glycerin, glycerine), 0.05% BSA</p>
纯度	Protein A purified
克隆	单克隆
克隆编号	EPR17376

同种型

IgG

应用

The Abpromise guarantee

Abpromise™承诺保证使用ab211927于以下的经测试应用

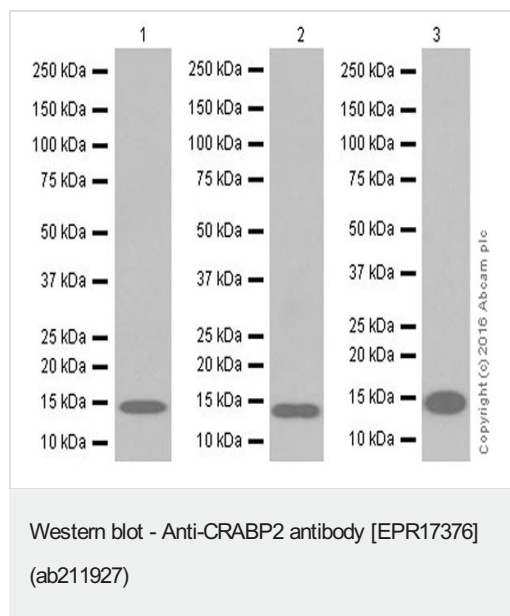
“应用说明”部分 下显示的仅为推荐的起始稀释度;实际最佳的稀释度/浓度应由使用者检定。

应用	Ab评论	说明
ICC/IF		1/250.
IHC-P	★★★★★ (1)	1/1000. Perform heat mediated antigen retrieval with Tris/EDTA buffer pH 9.0 before commencing with IHC staining protocol.
WB		1/1000. Detects a band of approximately 14 kDa (predicted molecular weight: 16 kDa).
Flow Cyt (Intra)		1/600. ab172730 - Rabbit monoclonal IgG, is suitable for use as an isotype control with this antibody.

靶标

功能	Transports retinoic acid to the nucleus. Regulates the access of retinoic acid to the nuclear retinoic acid receptors.
序列相似性	Belongs to the calycin superfamily. Fatty-acid binding protein (FABP) family.
结构域	Forms a beta-barrel structure that accommodates hydrophobic ligands in its interior.
细胞定位	Cytoplasm. Nucleus. Upon ligand binding, a conformation change exposes a nuclear localization motif and the protein is transported into the nucleus.

图片



Lanes 1 & 3 : Anti-CRABP2 antibody [EPR17376] (ab211927) at 1/5000 dilution

Lane 2 : Anti-CRABP2 antibody [EPR17376] (ab211927) at 1/1000 dilution

Lane 1 : Human skin lysate

Lane 2 : MCF7 (Human breast adenocarcinoma cell line) whole cell lysate

Lane 3 : HT-29 (Human colorectal adenocarcinoma cell line) whole cell lysate

Lysates/proteins at 10 µg per lane.

Secondary

Lane 1 : Goat Anti-Rabbit IgG Peroxidase Conjugate, specific to the non-reduced form of IgG at 1/10000 dilution

Lane 2 : Goat Anti-Rabbit IgG H&L (HRP) ([ab97051](#)) at 1/100000 dilution

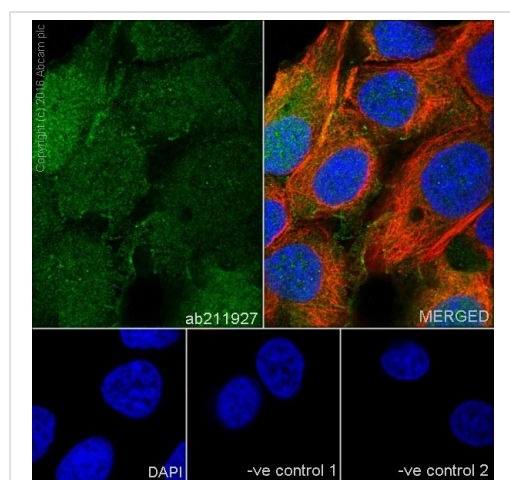
Lane 3 : Goat Anti-Rabbit IgG H&L (HRP) ([ab97051](#)) at 1/10000 dilution

Predicted band size: 16 kDa

Observed band size: 14 kDa

Exposure time: 30 seconds

Blocking/Dilution buffer: 5% NFDM/TBST.



Immunocytochemistry/ Immunofluorescence - Anti-CRABP2 antibody [EPR17376] (ab211927)

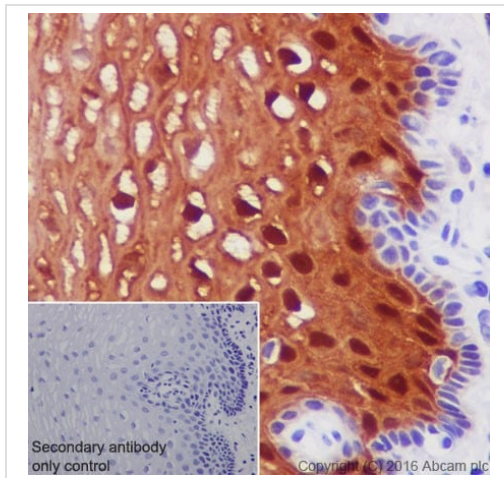
Immunofluorescent analysis of 4% paraformaldehyde-fixed, 0.1% Triton X-100 permeabilized MCF7 (Human breast adenocarcinoma cell line) cells labeling CRABP2 with ab211927 at 1/250 dilution, followed by Goat Anti-Rabbit IgG (Alexa Fluor® 488) ([ab150077](#)) secondary at 1/1000 dilution (green). Confocal image showing nuclear and cytoplasmic staining on MCF7 cell line. The nuclear counter stain is DAPI (blue).

Tubulin is detected with Anti-alpha Tubulin mouse MAb ([ab7291](#)) at 1/1000 dilution followed by Goat Anti-Mouse IgG H&L (Alexa Fluor® 594) ([ab150120](#)) secondary antibody at 1/1000 dilution (red).

The negative controls are as follows:

-ve control 1: ab211927 at 1/250 dilution, followed by Goat Anti-Mouse IgG H&L (Alexa Fluor® 594) ([ab150120](#)) secondary antibody at 1/1000 dilution.

-ve control 2: Anti-alpha Tubulin mouse MAb (**ab7291**) at 1/1000 dilution followed, by followed by Goat Anti-Rabbit IgG (Alexa Fluor® 488) (**ab150077**) secondary at 1/1000 dilution.

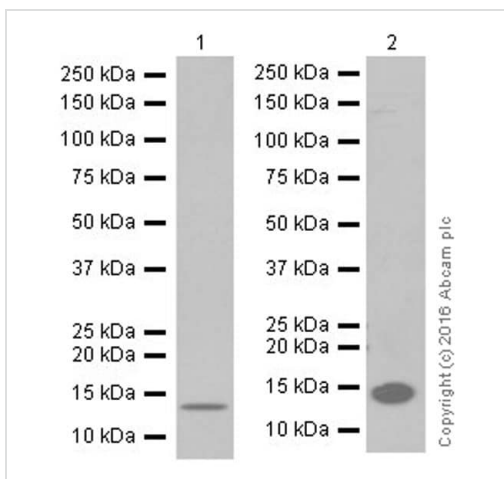


Immunohistochemistry (Formalin/PFA-fixed paraffin-embedded sections) - Anti-CRABP2 antibody [EPR17376] (ab211927)

Immunohistochemical analysis of paraffin-embedded human oesophagus tissue labeling CRABP2 with ab211927 at 1/1000 dilution, followed by Goat Anti-Rabbit IgG H&L (HRP) (**ab97051**) at 1/500 dilution. Cytoplasmic and nuclear staining on the stratified squamous epithelium of the human oesophagus is observed. Counter stained with Hematoxylin.

Secondary antibody only control: Used PBS instead of primary antibody, secondary antibody is Goat Anti-Rabbit IgG H&L (HRP) (**ab97051**) at 1/500 dilution.

Perform heat mediated antigen retrieval with Tris/EDTA buffer pH 9.0 before commencing with IHC staining protocol.



Western blot - Anti-CRABP2 antibody [EPR17376] (ab211927)

All lanes : Anti-CRABP2 antibody [EPR17376] (ab211927) at 1/1000 dilution

Lane 1 : Mouse skin lysate

Lane 2 : Rat skin lysate

Lysates/proteins at 10 µg per lane.

Secondary

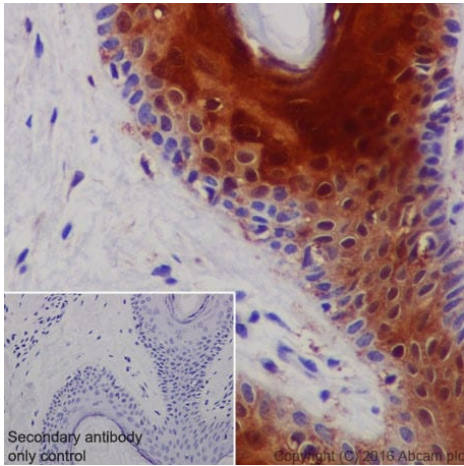
All lanes : Goat Anti-Rabbit IgG H&L (HRP) (**ab97051**) at 1/100000 dilution

Predicted band size: 16 kDa

Observed band size: 14 kDa

Exposure time: 3 minutes

Blocking/Dilution buffer: 5% NFDM/TBST.

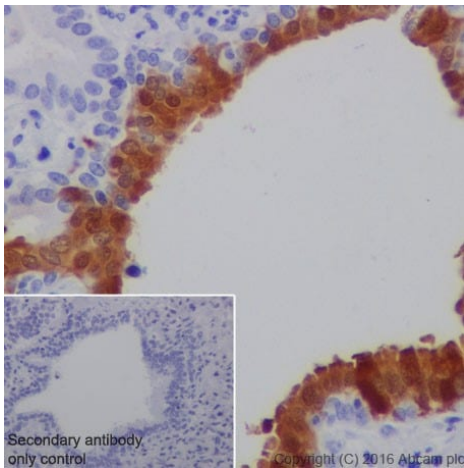


Immunohistochemistry (Formalin/PFA-fixed paraffin-embedded sections) - Anti-CRABP2 antibody [EPR17376] (ab211927)

Immunohistochemical analysis of paraffin-embedded human skin tissue labeling CRABP2 with ab211927 at 1/1000 dilution, followed by Goat Anti-Rabbit IgG H&L (HRP) ([ab97051](#)) at 1/500 dilution. Cytoplasmic and nuclear staining on the stratified squamous epithelium and hair follicle cells of the human skin is observed. Counter stained with Hematoxylin.

Secondary antibody only control: Used PBS instead of primary antibody, secondary antibody is Goat Anti-Rabbit IgG H&L (HRP) ([ab97051](#)) at 1/500 dilution.

Perform heat mediated antigen retrieval with Tris/EDTA buffer pH 9.0 before commencing with IHC staining protocol.

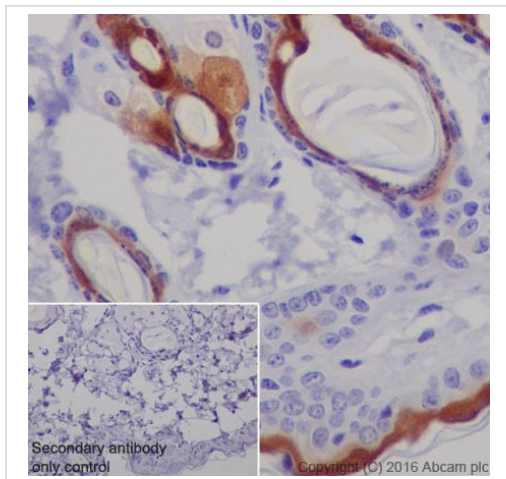


Immunohistochemistry (Formalin/PFA-fixed paraffin-embedded sections) - Anti-CRABP2 antibody [EPR17376] (ab211927)

Immunohistochemical analysis of paraffin-embedded human pancreatic ductal adenocarcinoma tissue labeling CRABP2 with ab211927 at 1/1000 dilution, followed by Goat Anti-Rabbit IgG H&L (HRP) ([ab97051](#)) at 1/500 dilution. Cytoplasmic and nuclear staining on the human pancreatic ductal adenocarcinoma is observed. Counter stained with Hematoxylin.

Secondary antibody only control: Used PBS instead of primary antibody, secondary antibody is Goat Anti-Rabbit IgG H&L (HRP) ([ab97051](#)) at 1/500 dilution.

Perform heat mediated antigen retrieval with Tris/EDTA buffer pH 9.0 before commencing with IHC staining protocol.

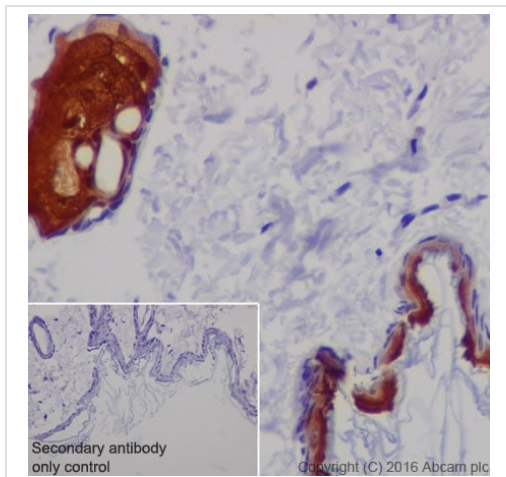


Immunohistochemistry (Formalin/PFA-fixed paraffin-embedded sections) - Anti-CRABP2 antibody [EPR17376] (ab211927)

Immunohistochemical analysis of paraffin-embedded mouse skin tissue labeling CRABP2 with ab211927 at 1/1000 dilution, followed by Goat Anti-Rabbit IgG H&L (HRP) ([ab97051](#)) at 1/500 dilution. Cytoplasmic and nuclear staining on the stratified squamous epithelium, hair follicle cells and sweat gland cells of the mouse skin is observed. Counter stained with Hematoxylin.

Secondary antibody only control: Used PBS instead of primary antibody, secondary antibody is Goat Anti-Rabbit IgG H&L (HRP) ([ab97051](#)) at 1/500 dilution.

Perform heat mediated antigen retrieval with Tris/EDTA buffer pH 9.0 before commencing with IHC staining protocol.

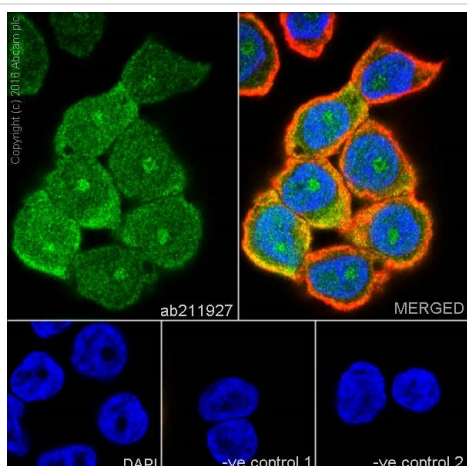


Immunohistochemistry (Formalin/PFA-fixed paraffin-embedded sections) - Anti-CRABP2 antibody [EPR17376] (ab211927)

Immunohistochemical analysis of paraffin-embedded rat skin tissue labeling CRABP2 with ab211927 at 1/1000 dilution, followed by Goat Anti-Rabbit IgG H&L (HRP) ([ab97051](#)) at 1/500 dilution. Cytoplasmic and nuclear staining on the stratified squamous epithelium and sweat gland cells of the rat skin is observed. Counter stained with Hematoxylin.

Secondary antibody only control: Used PBS instead of primary antibody, secondary antibody is Goat Anti-Rabbit IgG H&L (HRP) ([ab97051](#)) at 1/500 dilution.

Perform heat mediated antigen retrieval with Tris/EDTA buffer pH 9.0 before commencing with IHC staining protocol.



Immunocytochemistry/ Immunofluorescence - Anti-CRABP2 antibody [EPR17376] (ab211927)

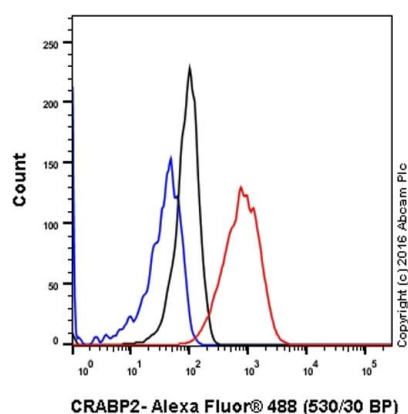
Immunofluorescent analysis of 4% paraformaldehyde-fixed, 0.1% Triton X-100 permeabilized HT-29 (Human colorectal adenocarcinoma cell line) cells labeling CRABP2 with ab211927 at 1/250 dilution, followed by Goat Anti-Rabbit IgG (Alexa Fluor® 488) ([ab150077](#)) secondary antibody at 1/1000 dilution (green). Confocal image showing nuclear and cytoplasmic staining on HT-29 cell line. The nuclear counter stain is DAPI (blue).

Tubulin is detected with Anti-alpha Tubulin mouse MAb ([ab7291](#)) at 1/1000 dilution, followed by Goat Anti-Mouse IgG H&L (Alexa Fluor® 594) ([ab150120](#)) secondary antibody at 1/1000 dilution (red).

The negative controls are as follows:

-ve control 1: ab211927 at 1/250 dilution, followed by Goat Anti-Mouse IgG H&L (Alexa Fluor® 594) ([ab150120](#)) secondary antibody at 1/1000 dilution.

-ve control 2: Anti-alpha Tubulin mouse MAb ([ab7291](#)) at 1/1000 dilution, followed by Goat Anti-Rabbit IgG (Alexa Fluor® 488) ([ab150077](#)) secondary antibody at 1/1000 dilution.



Flow Cytometry (Intracellular) - Anti-CRABP2 antibody [EPR17376] (ab211927)

Intracellular flow cytometric analysis of 4% paraformaldehyde-fixed MCF7 (Human breast adenocarcinoma cell line) cells labeling CRABP2 with ab211927 at 1/600 dilution (red) compared with a rabbit monoclonal IgG isotype control ([ab172730](#); black) and an unlabeled control (cells without incubation with primary antibody and secondary antibody; blue). Goat Anti-Rabbit IgG (Alexa Fluor® 488) at 1/2000 dilution was used as the secondary antibody.

Why choose a recombinant antibody?



Research with confidence
Consistent and reproducible results



Long-term and scalable supply
Recombinant technology



Success from the first experiment
Confirmed specificity



Ethical standards compliant
Animal-free production

Anti-CRABP2 antibody [EPR17376] (ab211927)

Please note: All products are "FOR RESEARCH USE ONLY. NOT FOR USE IN DIAGNOSTIC PROCEDURES"

Our Abpromise to you: Quality guaranteed and expert technical support

- Replacement or refund for products not performing as stated on the datasheet
- Valid for 12 months from date of delivery
- Response to your inquiry within 24 hours
- We provide support in Chinese, English, French, German, Japanese and Spanish
- Extensive multi-media technical resources to help you
- We investigate all quality concerns to ensure our products perform to the highest standards

If the product does not perform as described on this datasheet, we will offer a refund or replacement. For full details of the Abpromise, please visit <https://www.abcam.cn/abpromise> or contact our technical team.

Terms and conditions

- Guarantee only valid for products bought direct from Abcam or one of our authorized distributors